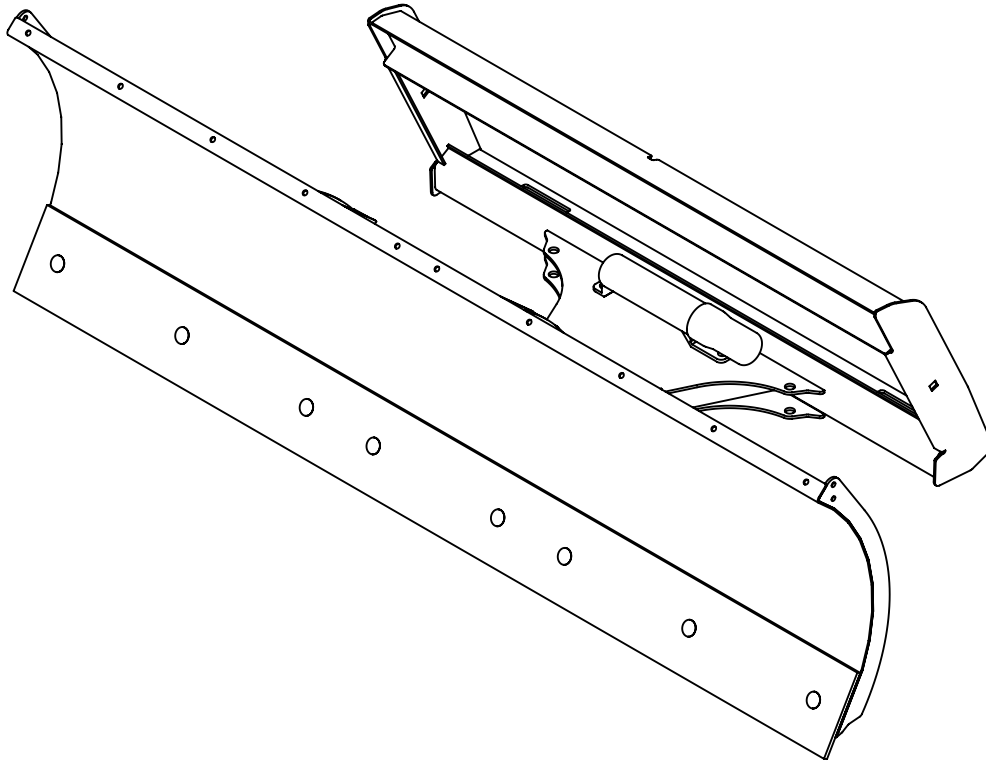




FRONT BLADE LOADER MOUNTED

LFB60.20

LFB72.20



MAN1396
(Rev 09/25/2024)

OPERATOR'S MANUAL

TO THE DEALER:

Assembly and proper installation of this product is the responsibility of the Woods® dealer. Read manual instructions and safety rules. Make sure all items on the Dealer's Pre-Delivery and Delivery Checklists in the Operator's Manual are completed before releasing equipment to the owner.

The dealer must complete the Product Registration included with the Operator's Manual. The customer must sign the registration which certifies that all Dealer Checklist items have been completed. The dealer is to return the prepaid postage portion to Woods, give one copy to the customer, and retain one copy.

Failure to register the product does not diminish customer's warranty rights.

TO THE OWNER:

Read this manual before operating your Woods equipment. The information presented will prepare you to do a better and safer job. Keep this manual handy for ready reference. Require all operators to read this manual carefully and become acquainted with all adjustment and operating procedures before attempting to operate. Replacement manuals can be obtained from your dealer. To obtain complete warranty details, visit WoodsEquipment.com/warranty. You may also request a hard copy by calling 1-800-319-6637 or mail your request to: Woods Equipment Company, Attn: Warranty Dept. 2606 South Illinois Route 2, Oregon, IL 61061. To locate your nearest dealer, check the Dealer Locator at www.WoodsEquipment.com, or in the United States and Canada call 1-800-319-6637.

The equipment you have purchased has been carefully engineered and manufactured to provide dependable and satisfactory use. Like all mechanical products, it will require cleaning and upkeep. Lubricate the unit as specified. Observe all safety information in this manual and safety decals on the equipment.

For service, your authorized Woods dealer has trained mechanics, genuine Woods service parts, and the necessary tools and equipment to handle all your needs.

Use only genuine Woods service parts. Substitute parts will void the warranty and may not meet standards required for safe and satisfactory operation. Record the model number and serial number of your equipment in the spaces provided:

Model: _____ **Date of Purchase:** _____

Serial Number: (see Safety Decal section for location) _____

Provide this information to your dealer to obtain correct repair parts.

Throughout this manual, the term **NOTICE** is used to indicate that failure to observe can cause damage to equipment. The terms **CAUTION**, **WARNING**, and **DANGER** are used in conjunction with the Safety-Alert Symbol (a triangle with an exclamation mark) to indicate the degree of hazard for items of personal safety.



This is the safety alert symbol. It is used to alert you to potential physical injury hazards. Obey all safety messages that follow this symbol to avoid possible injury or death.



Indicates a hazardous situation that, if not avoided, will result in death or serious injury.



Indicates a hazardous situation that, if not avoided, could result in death or serious injury.



Indicates a hazardous situation that, if not avoided, could result in minor or moderate injury.



Is used to address practices not related to physical injury.

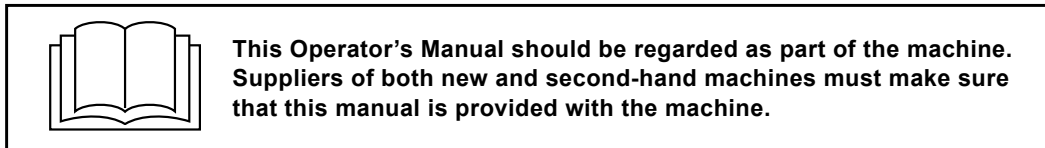
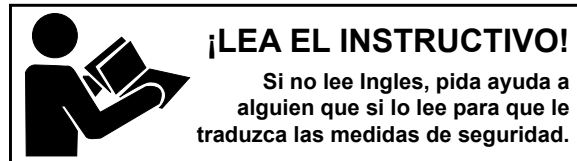
NOTE Indicates helpful information.

2 Introduction

MAN1396
(09/25/2024)

TABLE OF CONTENTS

INTRODUCTION	2
WARRANTY INFORMATION	2
SPECIFICATIONS	4
GENERAL INFORMATION	4
SAFETY RULES	5
TRAINING	5
PREPARATION	5
OPERATION	6
TRANSPORTATION	7
MAINTENANCE	7
STORAGE	7
SAFETY DECALS	8
OPERATION	9
PRE-OPERATION CHECKLIST	10
ATTACH AND DETACH FRONT BLADE TO LOADER	10
ADJUSTMENT	11
OPERATING	12
TRANSPORTATION	13
OPTIONAL EQUIPMENT	13
OWNER SERVICE	13
BLADE CUTTING EDGE REPLACEMENT	16
LUBRICATION	16
BOLTS & PINS	17
CLEANING	17
TRIP SPRINGS	17
DEALER CHECKLISTS	18
PARTS	19
APPENDIX	24
BOLT TORQUE CHART	24
BOLT SIZE CHART & ABBREVIATIONS	25



SPECIFICATIONS

Model	LFB60.20		LFB72.20	
	Mechanical Angle	Hydraulic Angle	Mechanical Angle	Hydraulic Angle
Configuration				
Cutting Width	59.6"		71.6"	
Moldboard Height	21			
Moldboard Thickness	12 GA			
Overall Depth	26.5"			
Weight	199 lbs	216 lbs	223 lbs	242 lbs
Ship Weight	233 lbs		260 lbs	
Cutting Edge	1/4" x 6" Reversible		5/16" X 6" Reversible	
Angle Adjustments	5 positions, up to 30°	Up to 30°	5 positions, up to 30°	Up to 30°
Tractor and Loader Compatibility	Loaders equipped with Skid Steer Style Quick Attach			
Optional Equipment	Hydraulic Angle, Rubber Deflector, Plow Guides, Urethane Cutting Edge, Urethane Skid Shoes			

GENERAL INFORMATION

The purpose of this manual is to assist you in operating and maintaining your Front Blade. Read it carefully. It furnishes information and instructions that will help you achieve years of dependable performance. These instructions have been compiled from extensive field experience and engineering data. Some information may be general in nature, due to unknown and varying operating conditions. However, through experience and these instructions, you should be able to develop procedures suitable to your particular situation.

The illustrations and data used in this manual were current at the time of printing. However, due to possible inline production changes, your machine may vary slightly in detail. We reserve the right to redesign and change the machines as may be necessary without notification.

Throughout this manual, references are made to right and left directions. These are determined by standing behind the tractor facing the direction of forward travel.

4 Introduction

MAN1396
(09/25/2024)

SAFETY RULES



ATTENTION! BECOME ALERT! YOUR SAFETY IS INVOLVED!



Safety is a primary concern in the design and manufacture of our products. Unfortunately, our efforts to provide safe equipment can be wiped out by an operator's single careless act.

In addition to the design and configuration of equipment, hazard control and accident prevention are dependent upon the awareness, concern, judgement, and proper training of personnel involved in the operation, transport, maintenance and storage of equipment.

It has been said "The best safety device is an informed, careful operator." We ask you to be that kind of operator.

TRAINING

- Safety instructions are important! Read all attachment and power unit manuals; follow all safety rules and safety decal information. (Replacement manuals and safety decals are available from your dealer. To locate your nearest dealer, check the Dealer Locator at www.WoodsEquipment.com, or in the United States and Canada call 1-800-319-6637.) Failure to follow instructions or safety rules can result in serious injury or death.
- If you do not understand any part of this manual and need assistance, see your dealer.
- Know your controls and how to stop engine and attachment quickly in an emergency.
- Operators must be instructed in and be capable of the safe operation of the equipment, its attachments, and all controls. Do not allow anyone to operate this equipment without proper instructions.
- Keep hands and body away from pressurized lines. Use paper or cardboard, not hands or other body parts to check for leaks. Wear safety goggles. Hydraulic fluid under pressure can easily penetrate skin and will cause serious injury or death.
- Make sure that all operating and service personnel know that if hydraulic fluid penetrates skin, it must be surgically removed as soon as possible by a doctor familiar with this form of injury or gangrene, serious injury, or death will result.
CONTACT A PHYSICIAN IMMEDIATELY IF FLUID ENTERS SKIN OR EYES. DO NOT DELAY.
- Never allow children or untrained persons to operate equipment.
- Keep children, bystanders, and animals away from the equipment and the storage area.

PREPARATION

- Air in hydraulic systems can cause erratic operation and allows loads or equipment components to drop unexpectedly. When connecting equipment or hoses or performing any hydraulic maintenance, purge any air in hydraulic system by operating all hydraulic functions several times. Do this before putting into service or allowing anyone to approach the equipment.
- Make sure all hydraulic hoses, fittings, and valves are in good condition and not leaking before starting power unit or using equipment. Check and route hoses carefully to prevent damage. Hoses must not be twisted, bent sharply, kinked, frayed, pinched, or come into contact with any moving parts. Operate moveable components through full operational range to check clearances. Replace any damaged hoses immediately.
- Make sure that all operating and service personnel know that if hydraulic fluid penetrates skin, it must be surgically removed as soon as possible by a doctor familiar with this form of injury or gangrene, serious injury, or death will result.
CONTACT A PHYSICIAN IMMEDIATELY IF FLUID ENTERS SKIN OR EYES. DO NOT DELAY.
- To help prevent injury from escaping hydraulic oil under pressure, relieve hydraulic system pressure before connecting or disconnecting hydraulic lines. See Relieving Pressure section of the Tractor Owner's Manual for further instructions.
- After connecting hoses, check that all control lever positions function as instructed in the Operator's Manual. Do not put into service until control lever and equipment movements are correct.
- Your dealer can supply original equipment hydraulic accessories and repair parts. Substitute parts may not meet original equipment specifications and may be dangerous.
- Set tractor hydraulic relief valve at 2500 psi (170 bars) (17,000 kPa) to prevent injury and equipment damage due to hydraulic system failure.
- Do not connect a low-pressure hydraulic hose into a high-pressure system—it will burst the hose. Do not use a high-pressure hose in place of a low-pressure hose—it is possible to rupture the valve.
- Always wear relatively tight and belted clothing to avoid entanglement in moving parts. Wear sturdy, rough-soled work shoes and protective equipment for eyes, hair, hands, hearing, and head.

SAFETY RULES



ATTENTION! BECOME ALERT! YOUR SAFETY IS INVOLVED!



- Be sure attachment is properly secured, adjusted, and in good operating condition. Coupler lockpins must be fully extended and properly engaged into attachment retaining slots.
- Power unit must be equipped with Roll Over Protection System (ROPS) or ROPS cab and seat belt. Keep seat belt securely fastened. Falling off power unit can result in death from being run over or crushed. Keep foldable ROPS system in “locked up” position at all times.
- A minimum 20% of tractor and equipment weight must be on the tractor front wheels when attachments are in transport position. Without this weight, front tractor wheels could raise up resulting in loss of steering. Make sure the proper type and amount of ballast is used for machine stability. See Preparing the Tractor section of the loader Operator’s Manual for ballast requirements. Weigh the tractor and equipment. Do not estimate.
- Make sure all safety decals are installed. Replace if damaged. (See Safety Decals section for location.)
- Operate only in daylight or good artificial light.
- Keep hands, feet, hair, and clothing away from equipment while engine is running. Stay clear of all moving parts.
- Always comply with all state and local lighting and marking requirements. Turn on flashing warning lights whenever traveling on a public roadway.
- Never allow riders on power unit or attachment.
- Power unit must be equipped with ROPS or ROPS cab and seat belt. Keep seat belt securely fastened. Falling off power unit can result in death from being run over or crushed. Keep foldable ROPS systems in “locked up” position at all times.
- Always sit in power unit seat when operating controls or starting engine. Securely fasten seat belt, place transmission in neutral, engage brake, and ensure all other controls are disengaged before starting power unit engine.
- Look down and to the rear and make sure area is clear before traveling in reverse.
- Do not operate or transport on steep slopes. Refer to tractor manual for proper ballasting and slope recommendations.
- Stop the loader arms gradually when lowering or lifting.
- Do not stop, start, or change directions suddenly on slopes.
- Use extreme care and reduce ground speed on slopes and rough terrain.
- Always inspect area and locate obstructions prior to Front Blade operation.
- Watch for hidden hazards on the terrain during operation.
- Stop power unit and equipment immediately upon striking an obstruction. Turn off engine, remove key, inspect, and repair any damage before resuming operation.
- Use extreme care when working close to fences, ditches, other obstructions, or on hillsides.
- Before manually changing positions of blade angle:
 - Park tractor on level ground, apply parking brake, level implement boom, shut off tractor, and remove key.
 - Make manual changes slowly and carefully to prevent hazardous movement of mechanisms.
 - Never stand in positions where you could become entrapped during adjustment changes or if the loader suddenly lowers.

OPERATION

- Improper operation can cause the machine to tip or roll over and cause injury or death.
 - Keep power unit loader arms and attachment as low as possible.
 - Do not travel or turn with power unit loader arms and attachment raised.
 - Turn only on level ground.
 - Go up and down slopes, not across them.
 - Keep the heavy end of the machine uphill.
 - Do not overload the machine.
- Never use attachment to carry loads. Check your power unit manual or see your dealer for rated operating capacity. Exceeding this capacity can cause machine to tip, roll over, or present other hazards that can cause injury or death.
- Do not allow bystanders within 25 feet of the area when operating, attaching, removing, assembling, maintaining, or servicing equipment.
- Do not allow children, bystanders or animals in the area when operating, attaching, removing, assembling, or servicing equipment.
- Contact with high voltage, overhead power lines, underground cables, gas lines, and other hazards can cause serious injury or death from electrocution, explosion, or fire.
- Do not operate or transport equipment while under the influence of alcohol or drugs.

SAFETY RULES



ATTENTION! BECOME ALERT! YOUR SAFETY IS INVOLVED!



- For manual adjustment blades, always secure angle lock pin to one side to prevent lock pin from bumping out of the positioning holes. Failure to do so may result in accidents and/or damage to the Front Blade.
- Dozing undisturbed soil or heavy material will result in damage to the Front Blade and void warranty.
- For hydraulic adjustment blades, ensure angle lock pin is removed. Failure to do so will cause accidents and/or damage to the Front Blade.

TRANSPORTATION

- Always comply with all federal, state, and local lighting and marking requirements. Turn on flashing warning lights whenever traveling on a public roadway.
- Never allow riders on power unit or attachment.
- Do not operate or transport on steep slopes. Refer to tractor manual for proper ballasting and slope recommendations.
- Do not operate or transport equipment while under the influence of alcohol or drugs.
- Leak down or failure of mechanical or hydraulic system can cause equipment to drop.

MAINTENANCE

- Before leaving operator's seat, lower lift arms and put attachment on the ground. Engage brake, stop engine, remove key, and remove seat belt.
- To help prevent injury from escaping hydraulic oil under pressure, relieve hydraulic system pressure before connecting or disconnecting hydraulic lines. See Relieving Pressure section of the Tractor Owner's Manual for further instructions.
- Make sure that all operating and service personnel know that if hydraulic fluid penetrates skin, it must be surgically removed as soon as possible by a doctor familiar with this form of injury or gangrene, serious injury, or death will result.
CONTACT A PHYSICIAN IMMEDIATELY IF FLUID ENTERS SKIN OR EYES. DO NOT DELAY.
- **NEVER GO UNDERNEATH EQUIPMENT.** Never place any part of the body underneath equipment or between moveable parts even when the engine has been turned off. Hydraulic system leak-down, hydraulic system failures, mechanical failures, or movement of control levers can cause equipment to drop or rotate unexpectedly and cause severe injury or death.

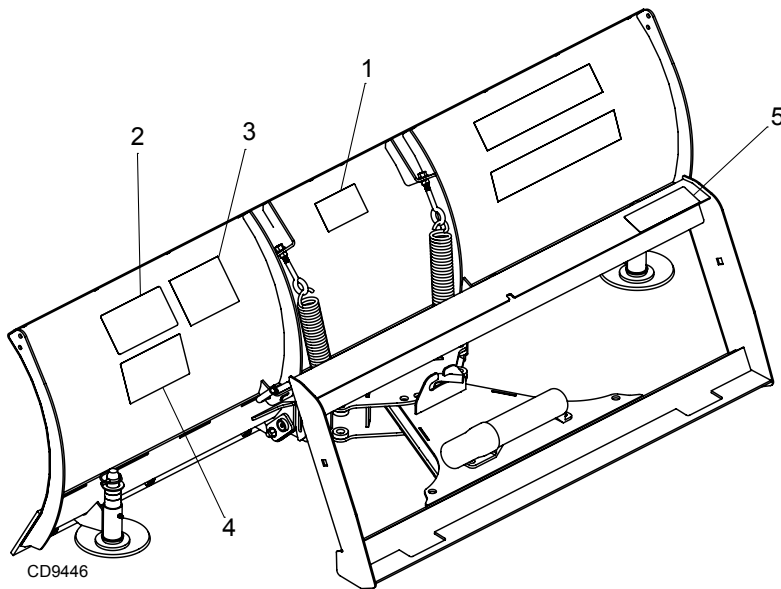
- Service work does not require going underneath implement.
- Read Operator's Manual for service instructions or have service performed by a qualified dealer.
- Always wear relatively tight and belted clothing to avoid getting caught in moving parts. Wear sturdy, rough-soled work shoes and protective equipment for eyes, hair, hands, hearing, and head; and respirator or filter mask where appropriate.
- Before performing service work that requires repair or replacement of parts, remove attachment from power unit. Hydraulic system failures, mechanical failures, or movement of control levers can cause equipment to drop or rotate unexpectedly and cause severe injury or death.
- Do not modify or alter or permit anyone else to modify or alter the equipment or any of its components in any way.
- Your dealer can supply original equipment hydraulic accessories and repair parts. Substitute parts may not meet original equipment specifications and may be dangerous.
- Never perform cleaning, service or maintenance with engine running.
- Keep all persons and animals away from operator control area while performing adjustments, service, or maintenance.
- Be sure attachment is properly secured, adjusted, and in good operating condition. Coupler lockpins must be fully extended and properly engaged into attachment retaining slots.
- Tighten all bolts, nuts and screws to torque chart specifications. Check that all cotter pins are installed securely to ensure equipment is in a safe condition before putting unit into service.
- Make sure all safety decals are installed. Replace if damaged. (See Safety Decals section for location.)

STORAGE

- Keep children, bystanders, and animals away from the equipment and the storage area.
- Do not detach loader with Front Blade installed. Detach loader only with materials bucket installed per Detaching Loader section of the loaders Operator's Manual.

SAFETY & INSTRUCTIONAL DECALS

! ATTENTION! BECOME ALERT! YOUR SAFETY IS INVOLVED! !
Replace Immediately If Damaged!



1 - Serial Number Plate



2 - P/N 1044569



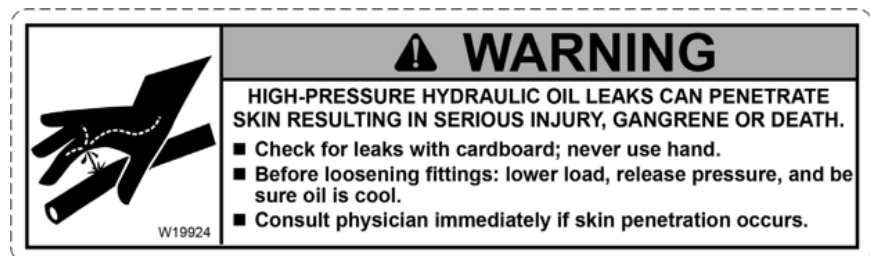
3 - P/N 56050



4 - P/N 5WP1044571



5 - P/N 19924



BE CAREFUL!

Keep safety decals clean and visible.

Use a clean, damp cloth to clean safety decals.

Avoid spraying too close to decals when using a pressure washer; high-pressure water can enter through very small scratches or under edges of decals causing them to peel or come off.

Replace safety decals if they are missing or illegible.

Replacement safety decals can be ordered free from your Woods dealer. To locate your nearest dealer, check the Dealer Locator at www.WoodsEquipment.com, or in the United States and Canada call 1-800-319-6637.

OPERATION

The operator is responsible for the safe operation of this equipment. Operators must be instructed in and be capable of the safe operation of the equipment, its attachments and all controls. Do not allow anyone to operate this equipment without proper instructions.

The Loader Front Blade is designed for snow removal but may be used for spreading, leveling, or moving light material. The blade may be angled to windrow material for removal.

Optional accessory kits are also available for the Loader Front Blade and are included in this manual. Non-marking, urethane cutting edge and skid shoes are designed to protect decorative driveway or patios. Plow guides are available for increased visibility of the corners of the blade, and a rubber deflector is available to reduce material flow over the top of the moldboard during operation. The optional Hydraulic Adjustment Kit makes blade angle changes quicker and easier without leaving the tractor seat.

WARNING

- Never allow children or untrained persons to operate equipment.
- Do not allow bystanders, pets, or animals within 25 feet of the area when operating, attaching, removing, assembling, maintaining, or servicing equipment.
- Never allow riders on power unit or attachment.
- Keep all persons away from operator control area while performing adjustments, service, or maintenance.
- Make sure that all operating and service personnel know that if hydraulic fluid penetrates skin, it must be surgically removed as soon as possible by a doctor familiar with this form of injury or gangrene, serious injury, or death will result.

CONTACT A PHYSICIAN IMMEDIATELY IF FLUID ENTERS SKIN OR EYES. DO NOT DELAY.

- A minimum 20% of tractor and equipment weight must be on the tractor front wheels when attachments are in transport position. Without this weight, front tractor wheels could raise up resulting in loss of steering. Make sure the proper type and amount of ballast is used for machine stability. See Preparing the Tractor section of the loader Operator's Manual for ballast requirements. Weigh the tractor and equipment. Do not estimate.

CAUTION

- Always wear relatively tight and belted clothing to avoid getting caught in moving parts. Wear sturdy, rough-soled work shoes and protective equipment for eyes, hair, hands, hearing, and head; and respirator or filter mask where appropriate.
- Stop power unit and equipment immediately upon striking an obstruction. Turn off engine, set parking brake, remove key, inspect, and repair any damage before resuming operation.
- Air in hydraulic systems can cause erratic operation and allows loads or equipment components to drop unexpectedly. When connecting equipment or hoses or performing any hydraulic maintenance, purge any air in hydraulic system by operating all hydraulic functions several times. Do this before putting into service or allowing anyone to approach the equipment.
- Make sure all hydraulic hoses, fittings, and valves are in good condition and not leaking before starting power unit or using equipment. Check and route hoses carefully to prevent damage. Hoses must not be twisted, bent sharply, kinked, frayed, pinched, or come into contact with any moving parts. Operate moveable components through full operational range to check clearances. Replace any damaged hoses immediately.
- To help prevent injury from escaping hydraulic oil under pressure, relieve hydraulic system pressure before connecting or disconnecting hydraulic lines. See Relieving Pressure section of the Tractor Owner's Manual for further instructions.
- After connecting hoses, check that all control lever positions function as instructed in the Operator's Manual. Do not put into service until control lever and equipment movements are correct.
- Ensure tractor hydraulic relief valve is set at no higher than 2500 psi (170 bars) (17,000 kPa) to prevent injury and equipment damage due to hydraulic system failure.
- Make sure attachment is properly secured, adjusted, and in good operating condition. Attachment hooks must be secured on holders and attachment pins must be secured on holder straps with quick-lock pins.

PRE-OPERATION CHECKLIST

(OWNER'S RESPONSIBILITY)

- ___ Check that all hardware is properly installed and secured.
- ___ Do not allow riders.
- ___ Review and follow all safety rules and safety decal instructions on page 5 through page 8.
- ___ Check that equipment is properly and securely attached to tractor.
- ___ Make sure tractor ROPS or ROPS CAB and seat belt are in good condition. Keep seat belt securely fastened during operation.
- ___ Check that all safety decals are installed and in good condition. Replace if needed.

ATTACH AND DETACH FRONT BLADE TO LOADER

⚠ WARNING

- **Be sure attachment is properly secured, adjusted, and in good operating condition. Coupler lockpins must be fully extended and properly engaged into attachment retaining slots.**

The Loader Front Blade is shipped completely assembled and should only be installed on properly ballasted tractors equipped with the appropriate loader.

Read the loader operator's manual connecting and removing instructions.

The loader coupler handles should be in the unlocked position and the lockpins retracted (Figure 1).

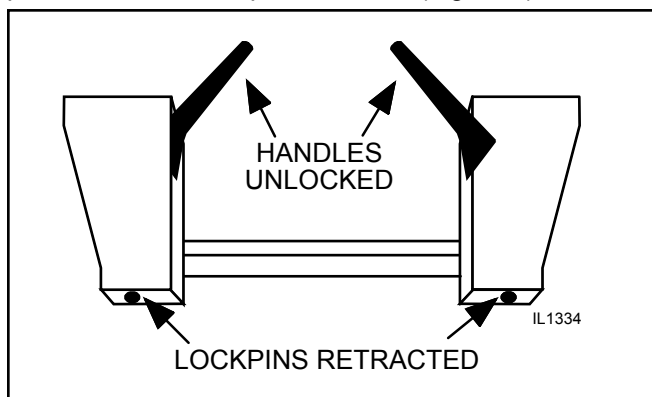


Figure 1. Loader Coupler Handles - Unlocked

Move to the loader operator seat, fasten seat belt, engage operator restraint, and start engine.

Lower loader lift arms to their lowest position.

Carefully move and align the loader coupler to the Loader Front Blade. The top of the loader coupler must index into the Loader Front Blade flange (Figure 2).

Roll the loader coupler into the Loader Front Blade flange so the coupler handles can be engaged.

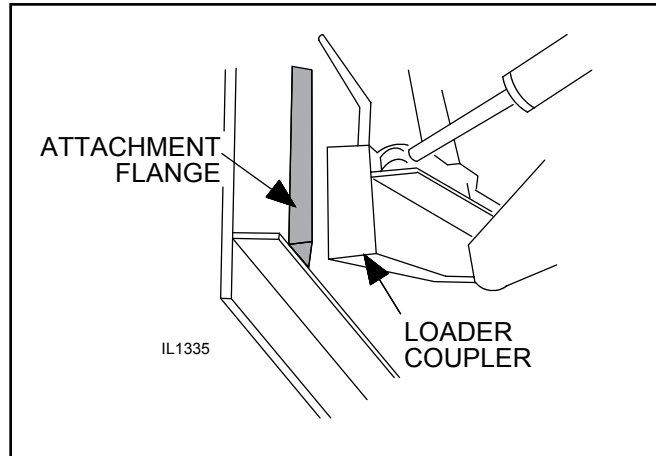


Figure 2. Attaching Loader Front Blade to Loader

Shut off the engine, set brake, remove key, remove seat belt, and release operator restraint. Dismount the loader.

Move the loader coupler handles to the locked position. The lockpins must be completely extended and secured into the retaining slots provided on the Pallet-Fork (Figure 3 and Figure 4).

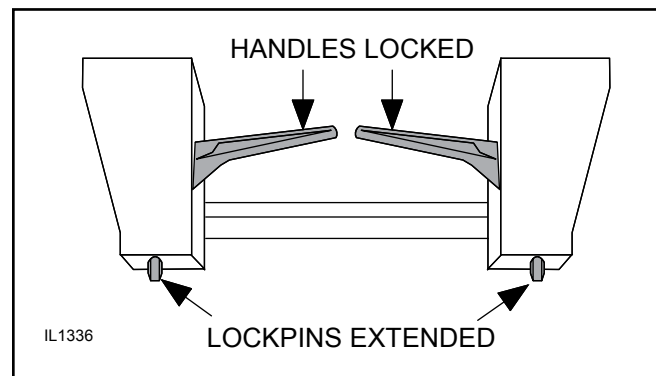


Figure 3. Loader Coupler Handles - Locked

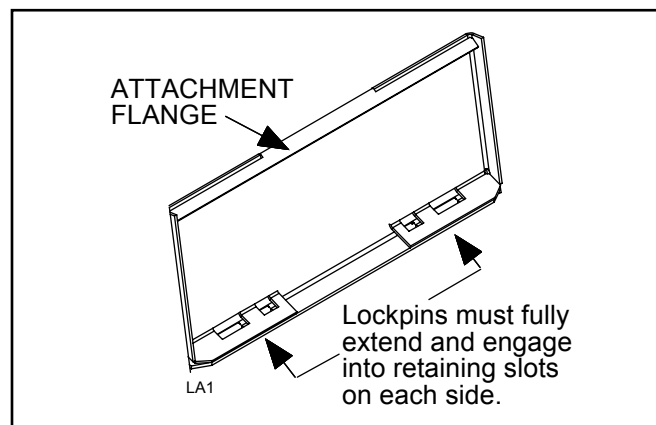


Figure 4. Retaining Slot Locations Back View of Attachment

Hydraulic Angle Kit (if equipped)

(See Figure 5)

Connecting Hydraulic Hoses

1. Lower Front Blade to the ground.
2. Relieve pressure in the 3rd function auxiliary circuit. (See Tractor Operator's Manual.)
3. Set parking brake and/or place transmission in Park. Shut off tractor engine and remove key.
4. Make sure hydraulic hoses (1) are routed through the hose holder (2).

NOTE: Coil hoses and secure to hose holder as necessary on non-self leveling loader models.

5. Connect the Front Blade's hydraulic pressure lines to the tractor loader 3rd function auxiliary circuit.

NOTE: Hose connections are identified with alternating male and female quick connect fittings to ensure hoses are matched correctly to the quick connect fittings on the 3rd function auxiliary circuit.

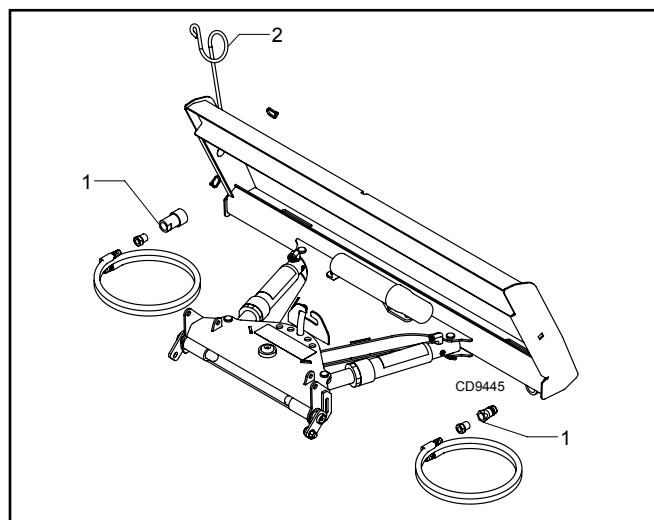


Figure 5. Loader Front Blade Hydraulic Kit

Disconnecting Hydraulic Hoses

1. Lower Front Blade to the ground.
2. Relieve pressure in the 3rd function auxiliary circuit. (See Tractor Operator's Manual.)
3. Set parking brake and/or place transmission in Park. Shut off tractor engine and remove key.
4. Disconnect the Front Blade's hydraulic pressure lines from the tractor loader 3rd function auxiliary circuit.
5. Couple the Front Blade's hydraulic pressure lines together when not in use to keep the quick connect fittings clean and protected.

ADJUSTMENT

WARNING

- Before manually changing positions of blade angle or skid shoes:
 - Park tractor on level ground, apply parking brake, level implement boom, shut off tractor, and remove key.
 - Make manual changes slowly and carefully to prevent hazardous movement of mechanisms.
 - Never stand in positions where you could become entrapped during adjustment changes or if the loader suddenly lowers.
 - Ensure joystick is locked during all adjustments for blade or skid shoes.
- For manual adjustment blades, angle lock pin to one side to prevent lock pin from bumping out of the positioning holes. Failure to do so may result in accidents and/or damage to the Front Blade.
- For hydraulic adjustment blades, ensure angle lock pin is removed. Failure to do so may result in accidents and/or damage to the Front Blade.

Blade Angle Adjustment - Manual

(See Figure 6)

The Front Blade angle may be adjusted to the center and 15° or 30° to the right or left of center. Blade angle should be adjusted by the operator as desired for windrowing material for removal.

1. Start tractor engine, release parking brake and/or place transmission in Neutral.
2. Roll Front Blade to level position and lower boom until skid shoes contact ground. Raise boom until skid shoes clear ground and lock joystick.
3. Engage tractor parking brake and/or place transmission in Park. Shut off tractor engine and remove key.
4. Remove angle lock pin (1) from storage position.
5. Set blade to desired angle position. 0, 15° or 30° right or left.
6. Replace lock pin and secure to one side.

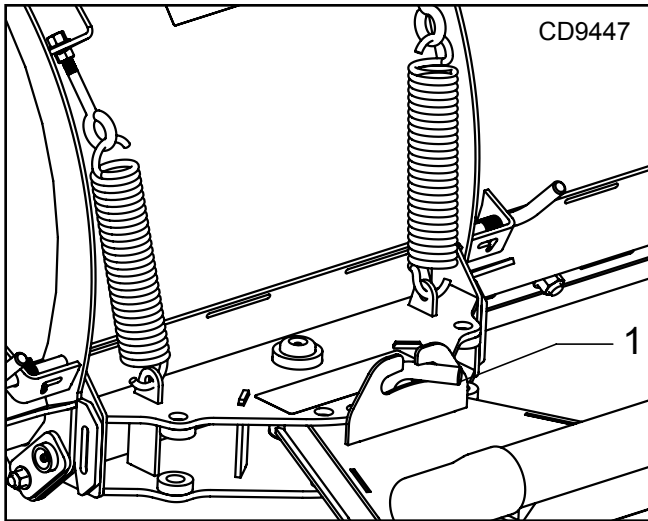


Figure 6. Loader Front Blade Blade Angle Adjustment

Blade Angle Adjustment - Hydraulic

(See Figure 6)

The Front Blade may be angled up to 30°, or to any position in between, right or left of center, by hydraulic remote control from the tractor seat. To prevent damage to the Front Blade and hydraulic cylinders, make sure to remove lock pin (1).

1. Raise the Front Blade a couple of inches off the ground by operating the control lever of the tractor loader.
2. Actuate the loader 3rd function control valve until the desired angle adjustment is reached.

NOTE: Do not angle the Front Blade under load.

Skid Shoes

(See Figure 7)

Skid shoes are used to provide height control and to help prevent gouging. Skid shoes should be adjusted by the operator for the type of surface to be cleaned.

1. Start tractor engine, release parking brake and/or place transmission in Neutral.
2. Roll Front Blade to level position and lower boom until skid shoes contact ground. Raise boom until skid shoes clear ground.
3. Lower loader arms to rest cutting edge on two 4" x 4" blocks and lock joystick. Place blocks so that they are solidly positioned and stable. Do not place any part of the body beneath the raised Front Blade when making adjustments.
4. Engage tractor parking brake and/or place transmission in Park. Shut off tractor engine and remove key.
5. Remove lock pin (1) from skid shoe (2) and remove skid shoe.

6. To lower blade height, remove spacers (as necessary) from the spacer stack (3). Re-install skid shoe in support bracket and place all removed spacers under lock pin for storage (4). Re-install lock pin.
7. To raise blade height, remove spacers (as necessary) from storage under lock pin and place in spacer stack. Re-install lock pin.
8. Repeat skid shoe adjustment for both sides and adjust both skid shoes equally.

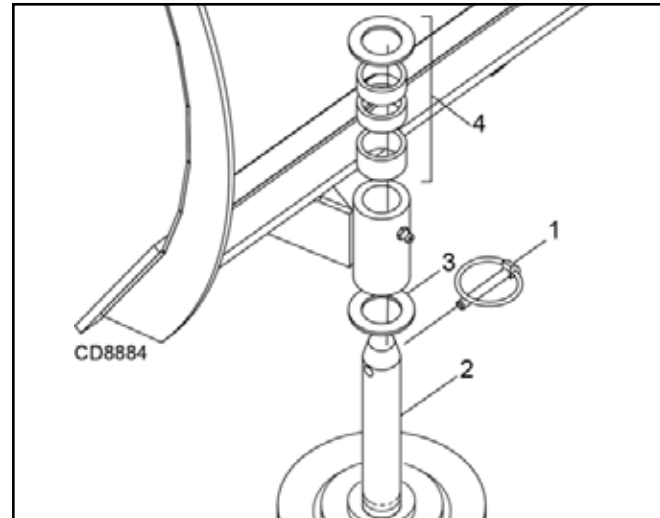


Figure 7. Loader Front Blade Skid Shoe Height Adjustment

OPERATING

The Front Blade should operating with the frame parallel to the ground with the attachment coupler rotated forward. Level the Front Blade with the Loader level indicator that has been properly adjusted for parallel operation.

⚠ WARNING

- Always inspect area and locate obstructions prior to Front Blade operation.
- Dozing undisturbed soil or heavy material will result in damage to the Front Blade.

Snow Removal

The Front Blade is to be used for snow removal from hard level surfaces. The moldboard is designed to trip forward if an obstruction is encountered during operation. Optional urethane cutting edge and skid shoes are offered and should be used to protect decorative driveways and patios.

Light Material

The Front Blade may be used for spreading, leveling or moving light materials. The blade should not be used for dozing undisturbed soil or heavy materials as this will result in damage to the Front Blade.

TRANSPORTATION

Moldboard Lock

(See Figure 8)

The Front Blade comes equipped with moldboard lock pins to secure the moldboard during transportation. Both moldboard lock pins should be engaged for transportation and both disengaged for operation.

1. Start tractor engine, release parking brake and/or place transmission in neutral.
2. Roll Front Blade to level position and lower boom until skid shoes contact ground. Raise boom until skid shoes clear ground and lock joystick.
3. Engage tractor parking brake and/or place transmission in Park. Shut off tractor engine and remove key.
4. Engage lock pin (1) for transportation by pulling out and rotating until spring pin (2) is aligned with the locked position (3). Release lock pin to engage into moldboard. Repeat on other side.
5. Disengage lock pins for operation by pulling outward on lock pin then rotating until spring pin is secured in the storage position (4). Repeat on other side.

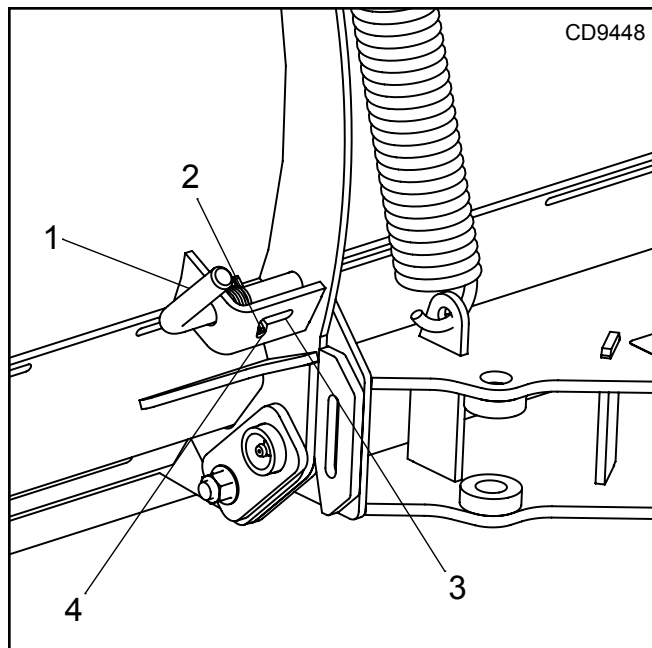


Figure 8. Loader Front Blade Moldboard Lock Pin Shown in Unlocked Position

OPTIONAL EQUIPMENT

Rubber Deflector 1044511 (LFB60.20) or 645174 (LFB72.20)

(See Figure 9)

1. Assemble rubber deflector (1) between deflector bars (2) and moldboard (3).
2. Secure deflector with supplied carriage bolts (4) and lock nuts (5).

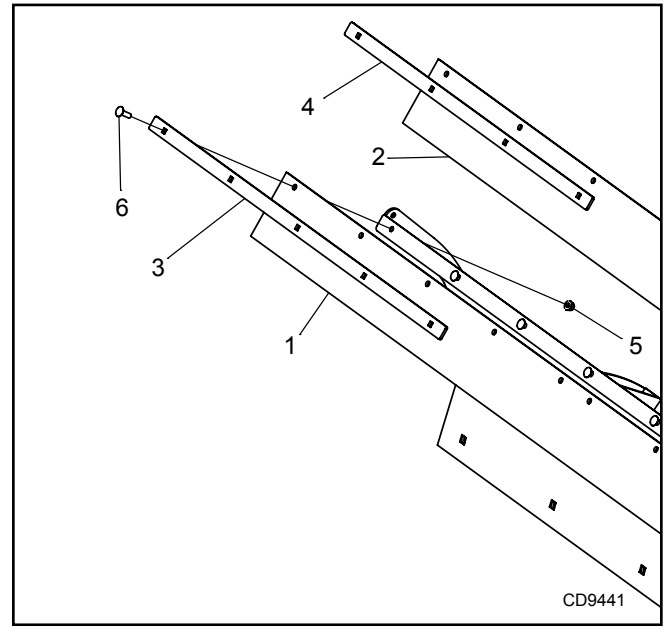


Figure 9. Loader Front Blade Rubber Deflector Kit Installation

Plow Guides 1044512

(See Figure 10)

1. Install plow guide (1) on inside edge of moldboard (2) with supplied bolts (3) and lock nuts (4).
2. Repeat for other side.

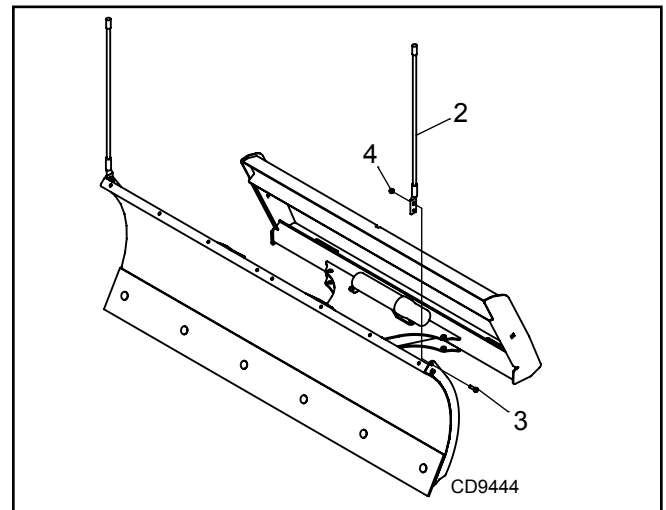


Figure 10. Loader Front Blade Plow Guide Kit Installation

**Urethane Cutting Edge
1044513 (LFB60.20) or 639995 (LFB72.20)
(See Figure 11)**

1. Remove factory installed steel cutting edge and hardware.
2. Install urethane cutting edge (1) to moldboard (2) between cutting edge bars (3).
3. Secure edge with supplied carriage bolts (4) and lock nuts (5).

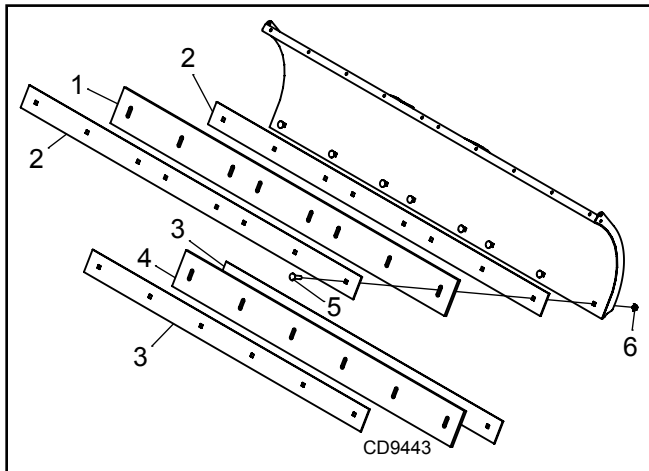


Figure 11. Loader Front Blade Urethane Cutting Edge Kit Installation

NOTE: Urethane cutting edge should be installed in the upward position to allow downward adjustment as it wears. Urethane cutting edge will wear faster than originally equipped steel cutting edge.

**Urethane Skid Shoes 1044514
(See Figure 12)**

1. Remove factory installed steel skid shoes.
2. Install urethane skid shoes using original spacers to desired blade height.
3. Re-install lock pin.
4. Repeat both sides and adjust both skid shoes equally.

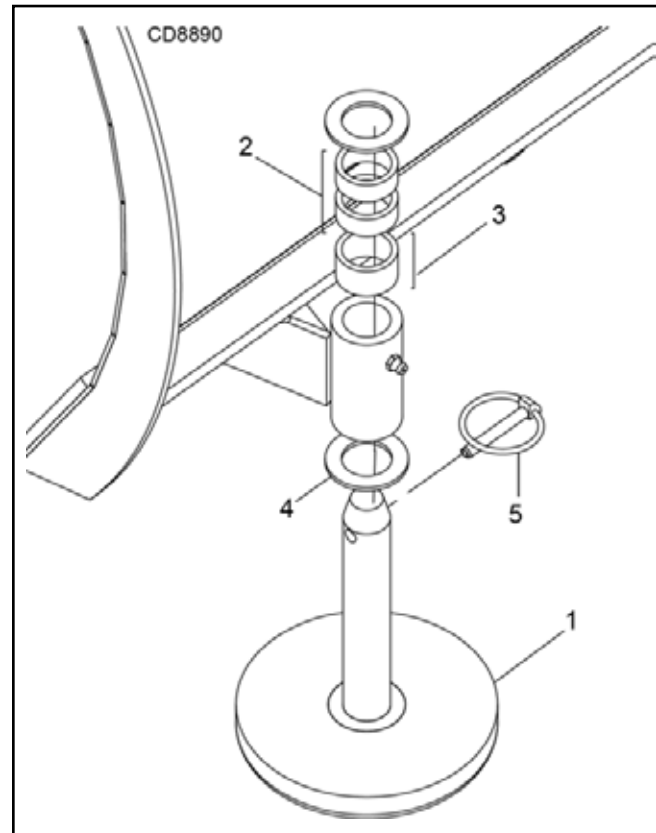


Figure 12. Loader Front Blade Urethane Skid Shoe Kit Installation

NOTE: Urethane skid shoes should be adjusted per Skid Shoe Adjustment section as they wear to maintain desired blade height. Urethane skid shoes will wear faster than the originally equipped steel skid shoes.

Hydraulic Angle Kit 639994

(See Figure 13)

1. Remove factory installed lock pin (1, Figure 3)
2. Install hydraulic angle cylinders (4) with supplied pins (5, 6) securing with washers (7) and cotter pins (8).
3. Install 90 elbows (9) to cylinders.
4. Install hydraulic pressure hoses (12) to 90 elbows.
5. Install male (10) and female (11) quick connect fittings to the hoses/cylinders as shown.

NOTE: Male and female quick connect fittings need to be installed on the correct hoses/cylinders as shown to prevent personal injury caused by unexpected blade movement.

6. Install hose holder (1) with supplied bolt (3) and lock nut (2).
7. Route hoses forward towards central pivot by securing hoses together with zip ties (13). Circle hoses upward and route through hose holder.

NOTE: Coil hoses and secure to hose holder as necessary on NSL loader models.

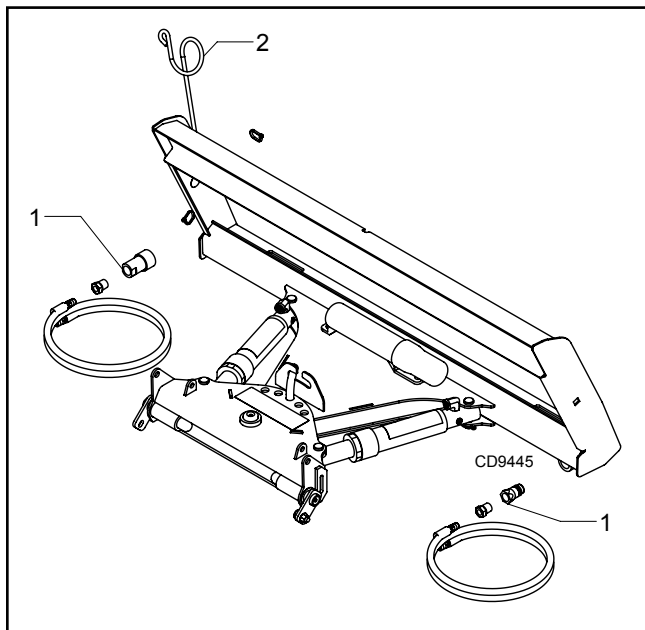


Figure 13. Loader Front Blade Hydraulic Kit Installation

OWNER SERVICE

⚠ WARNING

- Keep hands and body away from pressurized lines. Use paper or cardboard, not hands or other body parts to check for leaks. Wear safety goggles. Hydraulic fluid under pressure can easily penetrate skin and will cause serious injury or death.

CONTACT A PHYSICIAN IMMEDIATELY IF FLUID ENTERS SKIN OR EYES. DO NOT DELAY.

- **NEVER GO UNDERNEATH EQUIPMENT.** Never place any part of the body underneath equipment or between moveable parts even when engine has been turned off. Hydraulic system leak-down, hydraulic system failures, or movement of control levers can cause equipment to drop or rotate unexpectedly and cause severe injury or death.
 - Service work does not require going underneath implement.
 - Read Operator's Manual for service instructions or have service performed by a qualified dealer.
- Never perform cleaning, service or maintenance with engine running.
- Before leaving Operator's seat, follow power unit manual instructions. Lower loader arms and put attachment on the ground. Engage brake, stop engine, remove key, and remove seat belt.
- Keep all persons away from operator control area while performing adjustments, service, or maintenance.
- Your dealer can supply original equipment hydraulic accessories and repair parts. Substitute parts may not meet original equipment specifications and may be dangerous.

⚠ CAUTION

- Always wear relatively tight and belted clothing to avoid getting caught in moving parts. Wear sturdy, rough-soled work shoes and protective equipment for eyes, hair, hands, hearing, and head; and respirator or filter mask where appropriate.

BLADE CUTTING EDGE REPLACEMENT

To reverse the cutting edge:

1. Remove the 1/2" carriage bolts.
2. Remove the cutting edge from the moldboard and reinstall with the sharp edge down.
3. Replace cutting edge when both edges are worn.

LUBRICATION

Do not let excess grease collect on or around parts.

See Figure 14 for lubrication points and frequency for lubrication based on normal operating conditions. Severe or unusual conditions may require more frequent lubrication.

Use a lithium grease of #2 consistency with a MOLY (molybdenum disulfide) additive for all locations. Be sure to clean fittings thoroughly before attaching grease gun. One good pump of most guns is sufficient when lubrication schedule is followed.

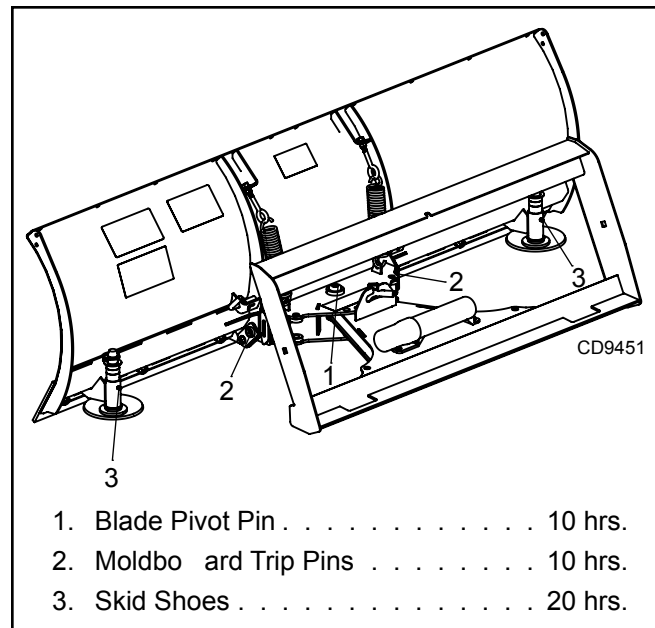


Figure 14. Lubrication Points

BOLTS & PINS

1. Check bolts and pins periodically to be sure they are tight.
2. Replace as necessary.

NOTE: Replacement bolts must have the same strength markings on the heads. Refer to bolt torque chart on page 24.

CLEANING

After Each Use

- Remove large debris from Front Blade.
- Inspect Front Blade and replace worn or damaged parts.
- Replace any safety decals that are missing or not readable.

Periodically or Before Extended Storage

- Clean large debris from Front Blade.
 - Remove the remainder using a low-pressure water spray.
1. Be careful when spraying near scratched or torn safety decals or near edges of decals as water spray can peel decal off surface.
 2. Be careful when spraying near chipped or scratched paint as water spray can lift paint.
 3. If a pressure washer is used, follow the advice of the pressure washer manufacturer.
- Inspect Front Blade and replace worn or damaged parts.
 - Sand down scratches and the edges of areas of missing paint and coat with spray paint of matching color (Purchased from your dealer).
 - Replace any safety decals that are missing or not readable (supplied free by your dealer). See Safety Decals section for location drawing.

TRIP SPRINGS

(See Figure 15)

Two springs are installed on each Front Blade. These springs hold the blade in operating position and allow the blade to “trip” if an obstruction is encountered.

Normal installed spring length is 9" (inside hooks). If blade trips too easily, tighten spring adjustment eyebolts until performance is satisfactory. Do not exceed 9-5/8" spring length. Adjustments can be made to the trip springs by following these instructions:

1. Start tractor engine, release parking brake and/or place transmission in Neutral.
2. Fully lower loader arms to rest cutting edge on level ground.
3. Engage tractor parking brake and/or place transmission in Park. Shut off tractor engine and remove key.
4. Loosen jam nut (1) on lower side of eyebolt (2).
5. Tighten lock nut (3) on upper side of eyebolt to increase tension on trip spring. Loosen lock nut to reduce tension.
6. Tighten jam nut on lower side of eyebolt to secure adjustment.
7. Repeat trip spring adjustment for both sides and always adjust both springs equally.

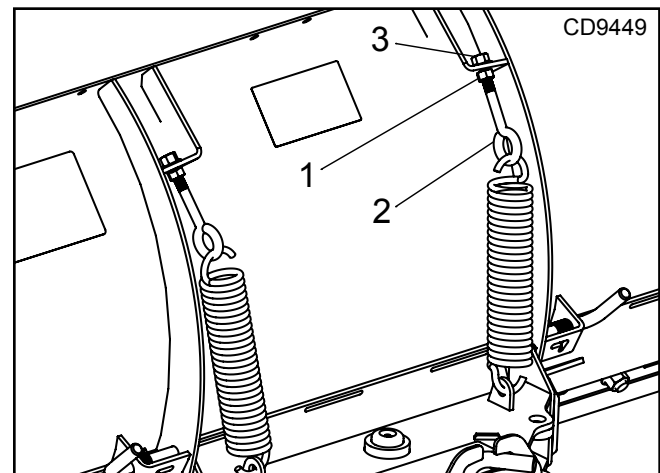


Figure 15. Loader Front Blade Trip Spring Adjustment

DEALER CHECKLISTS

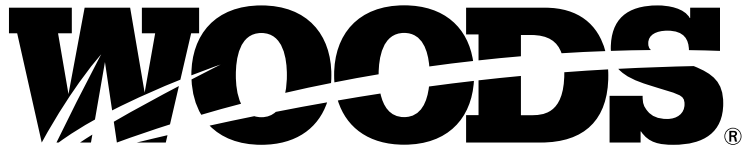
DEALER PRE-DELIVERY CHECKLIST (DEALER'S RESPONSIBILITY)

Inspect the equipment thoroughly after assembly to be certain it is set up properly before delivering it to the customer. The following checklist is a reminder of points to inspect. Check off each item if it is found satisfactory or after proper adjustment is made.

- _____ Check that all safety decals are installed and in good condition. Replace if damaged.
- _____ Check all bolts to be sure they are tight.
- _____ Check that all cotter pins and safety pins are properly installed.
- _____ Check and grease all lubrication points as identified in the "Owner Service, Lubrication" section.

DEALER DELIVERY CHECKLIST (DEALER'S RESPONSIBILITY)

- _____ Show customer the safe and proper procedures to be used when mounting, dismounting and storing equipment.
- _____ Make customer aware of optional equipment available so that customer can make proper choices as required.
- _____ Make sure the proper type and amount of ballast is used for machine stability. See Preparing the Tractor section of the Loaders Operator's Manual for ballast requirements. Ensure a minimum 20% of tractor and equipment weight must be on the tractor front wheels when attachments are in transport position. Explain the hazards of improperly ballasted tractor.
- _____ Show customer how to make adjustments.
- _____ Instruct customer how to lubricate and explain importance of lubrication.
- _____ Present Operator's Manual and request that customer and all operators read it before operating equipment. Point out the manual safety rules, explain their meanings, and emphasize the increased safety hazards that exist when safety rules are not followed.
- _____ Point out the safety decals. Explain their meaning and the need to keep them in place and in good condition. Emphasize the increased safety hazards when instructions are not followed.
- _____ Explain to customer the potential crushing hazards of going underneath raised equipment. Instruct customer that service work does not require going underneath unit and never to do so.



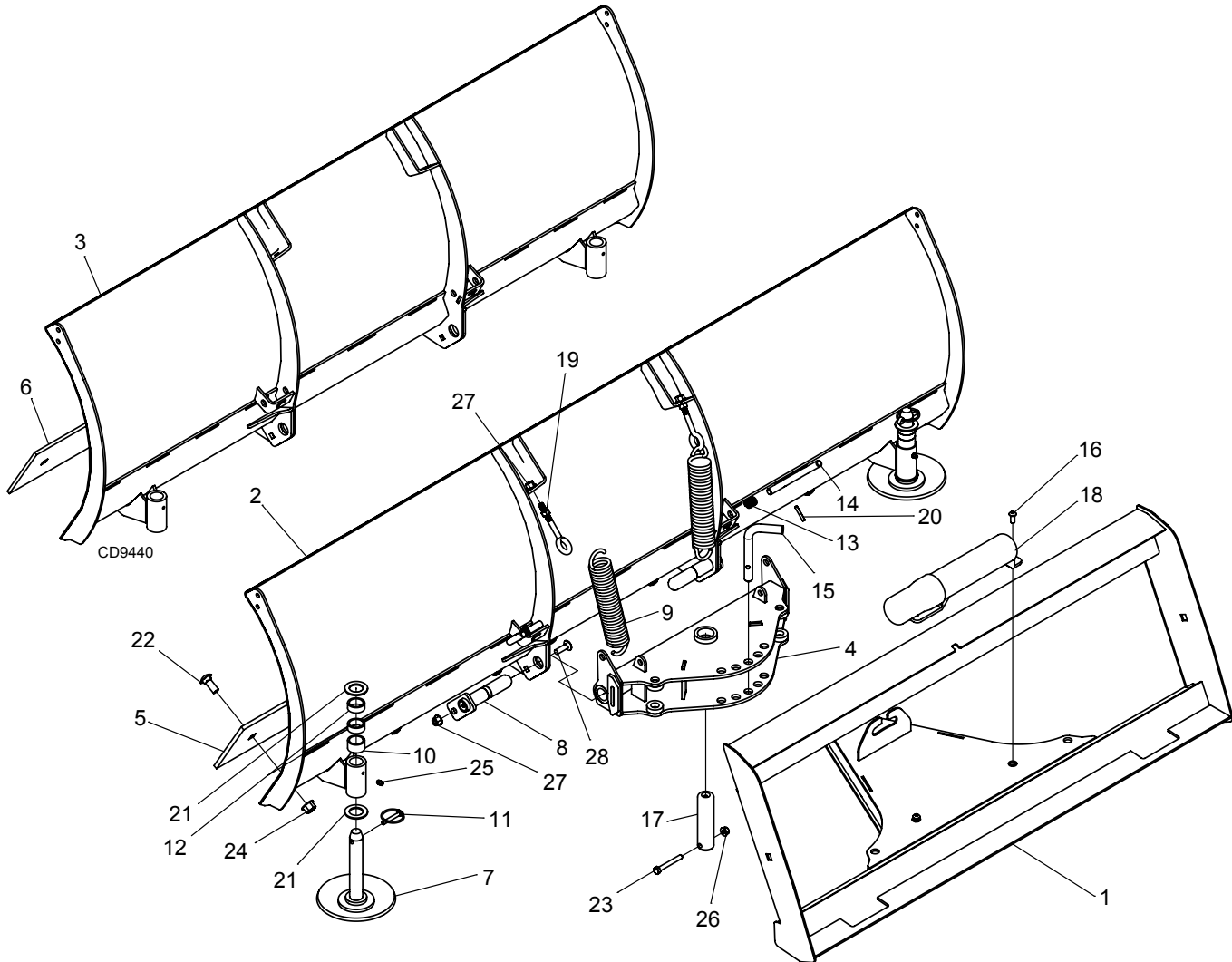
Loader Front Blade

LFB60.20

LFB72.20

FRONT BLADE ASSEMBLY	20
RUBBER DEFLECTOR KIT (OPTIONAL)	21
PLOW GUIDE KIT (OPTIONAL)	21
URETHANE CUTTING EDGE KIT (OPTIONAL)	22
URETHANE SKID SHOE KIT (OPTIONAL)	22
HYDRAULIC ANGLE KIT (OPTIONAL)	23

FRONT BLADE ASSEMBLY



REF	PART	QTY	DESCRIPTION
1	645763RP	1	WA, QA MOUNT
2	645798RP	1	WA, MOLDBOARD 72
3	645802RP	1	WA, MOLDBOARD 60
4	645810RP	1	WA, ANGLE FRAME HYD
5	645800RP	1	EDGE, CUTTING .31 X 5.9 X 71.6
6	1044244	1	EDGE, CUTTING .25 X 5.9 X 59.6
7	1044243	2	WA, SKID SHOE
8	1044844	2	WA, PIN 1.0 X 4.15
9	1044234	2	SPRING, EXT 1.75 .25 9.0 60
10	33647	2	SLV, 1.313 X 1.049 X .75
11	62043	2	1/4 X 1-3/4 KLIK PIN
12	65129	4	PIPE 1 SCH 40X 0.50
13	66510	2	SPR/CMP 0.66X.06X2.5X8
14	66836	2	PIN, BENT .5 X 1.96
15	67156	1	PIN FRMD 5/8X4.61X2.36

REF	PART	QTY	DESCRIPTION
16	78285	2	SCREW, BTN HD 5/16 NC X 3/4 ZP
17	1020279	1	PIN 1.25 X 4.88 C-DRILL
18	1026530	1	MANUAL TUBE
19	1044235	2	EYEBOLT, W/NUT 3/8NC X 3
20	1044506	2	PIN, SPRING 3/16 X 1-1/4

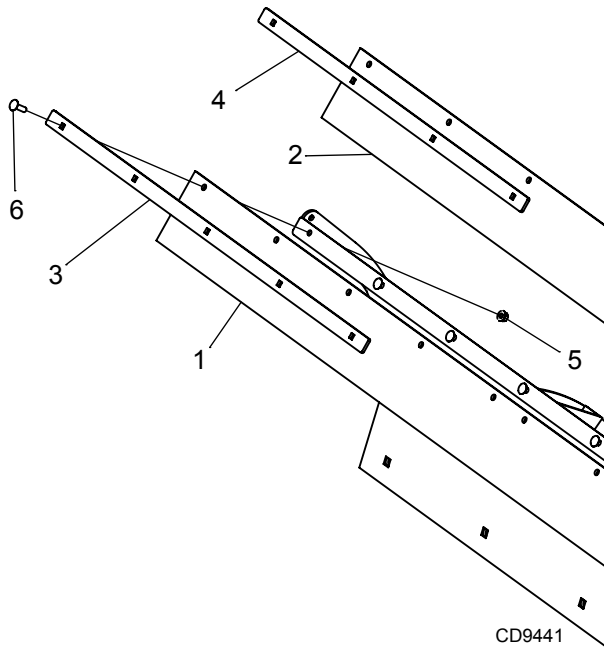
OBTAIN LOCALLY

REF	PART	QTY	DESCRIPTION
21	1863	4	WASHER, FLAT, 1 SAE ZP
22	2615	8	BOLT CRG 1/2 NC X 1-1/4 GR5
23	10509	1	HHCS 5/16 NC X 2-1/2 GR5
24	11900	8	NUT, HFN 1/2 NC, LOCK, GR G
25	12296	2	1/4 28 STRT G FTG 15/32L
26	14139	1	NUT, HFN 5/16 NC, LOCK, GR G
27	14350	4	NUT, HFN 3/8 NC, LOCK, GR G
28	20973	2	BOLT CRG 3/8 NC X 1-1/4 GR5

20 Parts

MAN1396
(09/25/2024)

RUBBER DEFLECTOR KIT 1044511 (LFB60.20) OR 645174 (LFB72.20) (OPTIONAL)

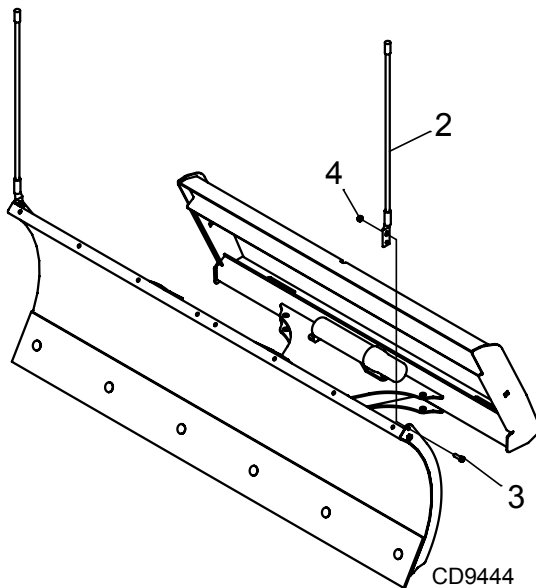


REF	PART	QTY	DESCRIPTION
1	645830	1	DEFLECTOR, RUBBER 72
2	1044232	1	DEFLECTOR, RUBBER 60
3	645831RP	2	BAR, DEFLECTOR 72
4	1044245	2	BAR, DEFLECTOR 60

OBTAIN LOCALLY

5	14139	10	NUT, HFN 5/16 NC, LOCK, GR G
6	24409	10	BOLT CRG 5/16NC X 1 ZP

PLOW GUIDE KIT 1044512 (OPTIONAL)



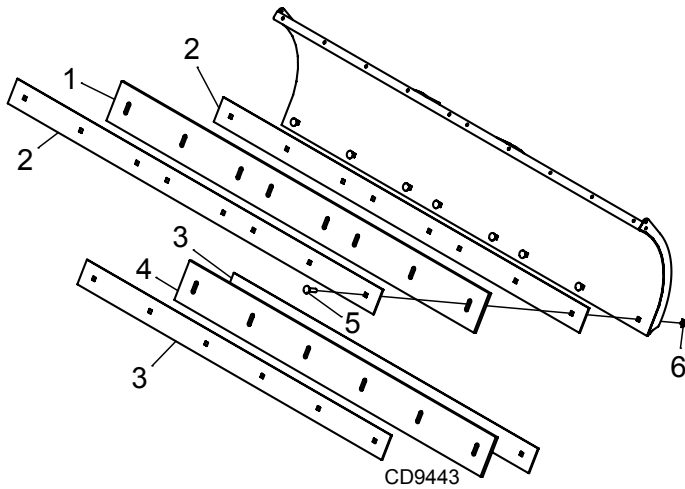
REF	PART	QTY	DESCRIPTION
A	1044512	1	PLOW GUIDE KIT
2	NSS	2	KIT, 24IN PLOW GUIDES W/ HDWR

OBTAIN LOCALLY

3	14562	4	HHCS 5/16 NC X 1 GR5
4	FA220	4	NUT 5/16 NC NYLOCK ZP

NSS NOT SERVICED SEPARATELY

URETHANE CUTTING EDGE KIT 1044513 (LFB60.20) OR 639995 (LFB72.20) (OPTIONAL)

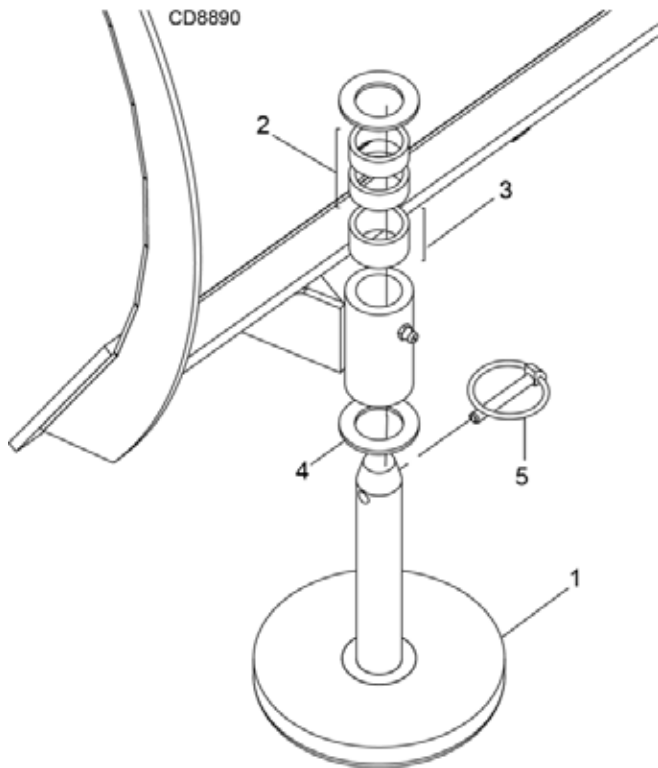


REF	PART	QTY	DESCRIPTION
1	645825	1	EDGE, URETHANE CUTTING 72
2	645827RP	2	BAR, SOFT CUTTING EDGE 72
3	1044556	2	BAR, SOFT CUTTING EDGE 60
4	1044563	1	EDGE, URETHANE CUTTING 60

OBTAIN LOCALLY

5	10284	8	BOLT CRG 1/2 NC X 2
6	11900	8	NUT, HFN 1/2 NC, LOCK, GR G

URETHANE SKID SHOE KIT 1044514 (OPTIONAL)



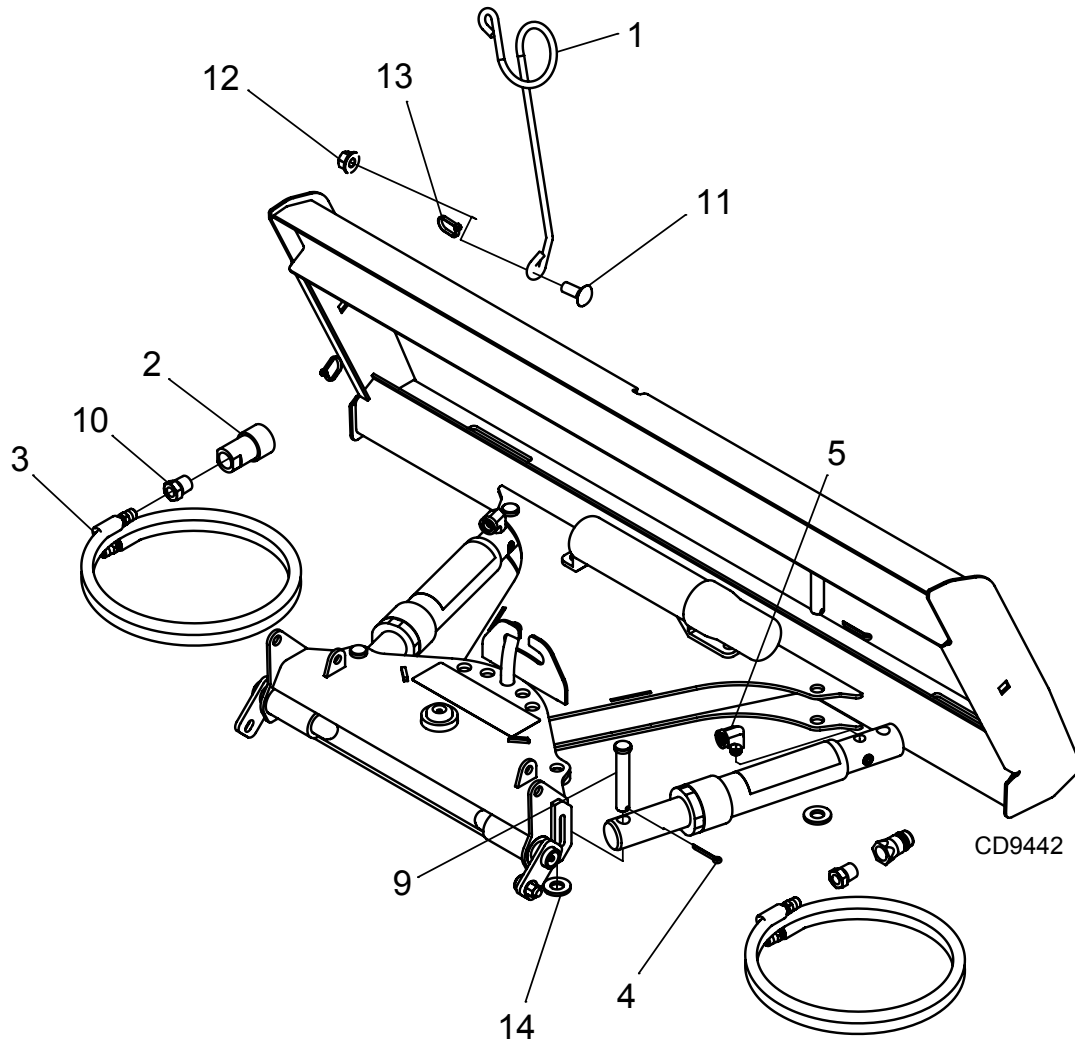
REF	PART	QTY	DESCRIPTION
A	1044514	1	URETHANE SKID SHOE KIT
1	1044562	2	URETHANE SKID SHOE
2	65129 †	4	1/2" SPACER
3	33647 †	2	3/4" SPACER
4	---- * †	4	1" SAE FLAT WASHER
5	62043 * †	2	1/4 KLIK PIN

† NOT INCLUDED IN KIT
* STANDARD HARDWARE, OBTAIN LOCALLY

22 Parts

MAN1396
(09/25/2024)

HYDRAULIC ANGLE KIT 639994 (OPTIONAL)



REF	PART	QTY	DESCRIPTION
1	3443	1	HYD HOSE HOLDER
2	26124	2	1/2 QUICK DISCONNECT CPLR
3	632958	2	HOSE, .25ID X 1/4NPT X 65
4	64462	4	COTTER PIN 5/32 X 1-1/4
5	313041	2	ELBOW, STREET 90 DEG 1/4 NPT

OBTAIN LOCALLY

REF	PART	QTY	DESCRIPTION
11	2615	1	BOLT CRG 1/2 NC X 1-1/4 GR5
12	11900	1	NUT, HFN 1/2 NC, LOCK, GR G
13	31407	2	HYD HOSE TIE 7" LG
14	57817	4	WSHR 5/8 SAE FLAT HRDN

BOLT TORQUE CHART

Always tighten hardware to these values unless a different torque value or tightening procedure is listed for a specific application.

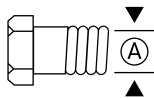
Fasteners must always be replaced with the same grade as specified in the manual parts list.

Always use the proper tool for tightening hardware: SAE for SAE hardware and Metric for metric hardware. Make sure fastener threads are clean and you start thread engagement properly.

All torque values are given to specifications used on hardware defined by SAE J1701 MAR 99 & J1701M JUL 96.

SAE SERIES TORQUE CHART

SAE Bolt Head Identification



SAE Grade 2
(No Dashes)



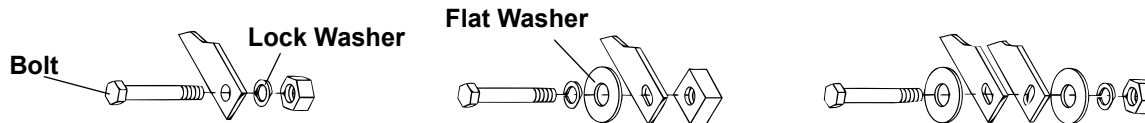
SAE Grade 5
(3 Radial Dashes)



SAE Grade 8
(6 Radial Dashes)

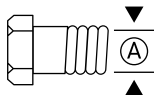
Ⓐ	Wrench Size	Marking on Head					
		SAE 2		SAE 5		SAE 8	
		lbs-ft	N-m	lbs-ft	N-m	lbs-ft	N-m
1/4"	7/16"	6	8	10	13	14	18
5/16"	1/2"	12	17	19	26	27	37
3/8"	9/16"	23	31	35	47	49	67
7/16"	5/8"	36	48	55	75	78	106
1/2"	3/4"	55	75	85	115	120	163
9/16"	13/16"	78	106	121	164	171	232
5/8"	15/16"	110	149	170	230	240	325
3/4"	1-1/8"	192	261	297	403	420	569
7/8"	1-5/16"	306	416	474	642	669	907
1"	1-1/2"	467	634	722	979	1020	1383

TYPICAL WASHER INSTALLATIONS



METRIC SERIES TORQUE CHART

Metric Bolt Head Identification



Metric
Grade 8.8



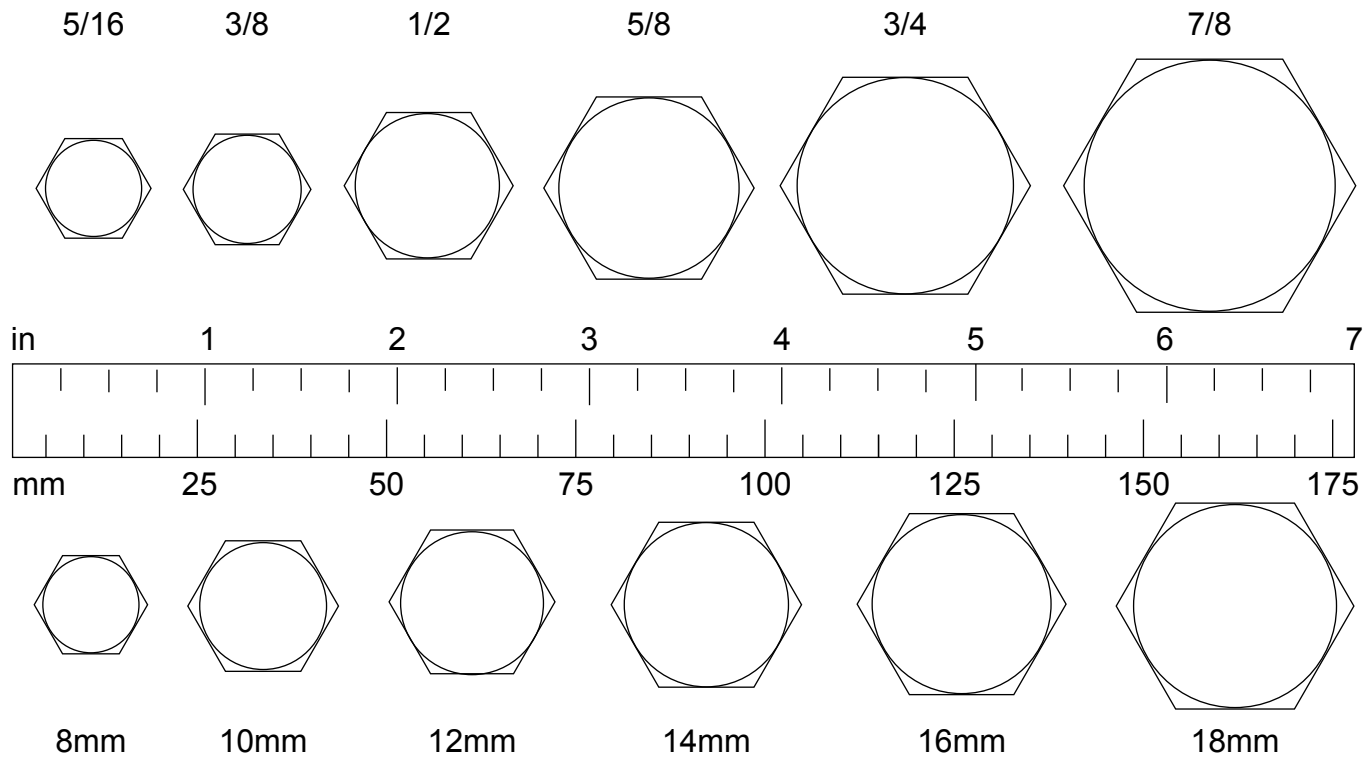
Metric
Grade 10.9

Ⓐ	Wrench Size	Marking on Head								Ⓐ
		Coarse Thread				Fine Thread				
		Metric 8.8		Metric 10.9		Metric 8.8		Metric 10.9		
Diameter & Thread Pitch (Millimeters)		N-m	lbs-ft	N-m	lbs-ft	N-m	lbs-ft	N-m	lbs-ft	Diameter & Thread Pitch (Millimeters)
6 x 1.0	10 mm	8	6	11	8	8	6	11	8	6 x 1.0
8 x 1.25	13 mm	20	15	27	20	21	16	29	22	8 x 1.0
10 x 1.5	16 mm	39	29	54	40	41	30	57	42	10 x 1.25
12 x 1.75	18 mm	68	50	94	70	75	55	103	76	12 x 1.25
14 x 2.0	21 mm	109	80	151	111	118	87	163	120	14 x 1.5
16 x 2.0	24 mm	169	125	234	173	181	133	250	184	16 x 1.5
18 x 2.5	27 mm	234	172	323	239	263	194	363	268	18 x 1.5
20 x 2.5	30 mm	330	244	457	337	367	270	507	374	20 x 1.5
22 x 2.5	34 mm	451	332	623	460	495	365	684	505	22 x 1.5
24 x 3.0	36 mm	571	421	790	583	623	459	861	635	24 x 2.0
30 x 3.0	46 mm	1175	867	1626	1199	1258	928	1740	1283	30 x 2.0

BOLT SIZE CHART

NOTICE: Chart shows bolt thread sizes and corresponding head (wrench) sizes for standard SAE and metric bolts.

SAE BOLT THREAD SIZES



METRIC BOLT THREAD SIZES

ABBREVIATIONS

AG Agriculture	HT Heat-Treated	ORBM O-Ring Boss - Male
ASABE American Society of Agricultural & Biological Engineers (formerly ASAE)	JIC Joint Industry Council 37° Degree Flare	P Pitch
ASAE American Society of Agricultural Engineers	LH Left Hand	PBY Power-Beyond
ATF Automatic Transmission Fluid	LT Left	psi Pounds per Square Inch
BSPP British Standard Pipe Parallel	m Meter	PTO Power Take Off
BSPTM British Standard Pipe Tapered Male	mm Millimeter	QD Quick Disconnect
CV Constant Velocity	M Male	RH Right Hand
CCW Counter-Clockwise	MPa Mega Pascal	ROPS Roll-Over Protective Structure
CW Clockwise	N Newton	RPM Revolutions Per Minute
F Female	NC National Coarse	RT Right
FT Full Thread	NF National Fine	SAE Society of Automotive Engineers
GA Gauge	NPSM National Pipe Straight Mechanical	UNC Unified Coarse
GR (5, etc.) Grade (5, etc.)	NPT National Pipe Tapered	UNF Unified Fine
HHCS Hex Head Cap Screw	NPT SWF National Pipe Tapered Swivel Female	UNS Unified Special

PART NO.
MAN1396

WOODS®

2606 South Illinois Route 2
Post Office Box 1000
Oregon, Illinois 61061 USA

800-319-6637 tel
800-399-6637 fax
woodsequipment.com



© 2024 Woods Equipment Company. All rights reserved. Woods® and the Woods logo are trademarks of Woods Equipment Company. All other trademarks, trade names, or service marks not owned by Woods Equipment Company that appear in this manual are the property of their respective companies or mark holders. Specifications subject to change without notice.