

REAR BLADE & LANDSCAPE RAKE

RBS54

LRS52

RBS60P

LRS72P

RBS60

LRS60

RBS72P

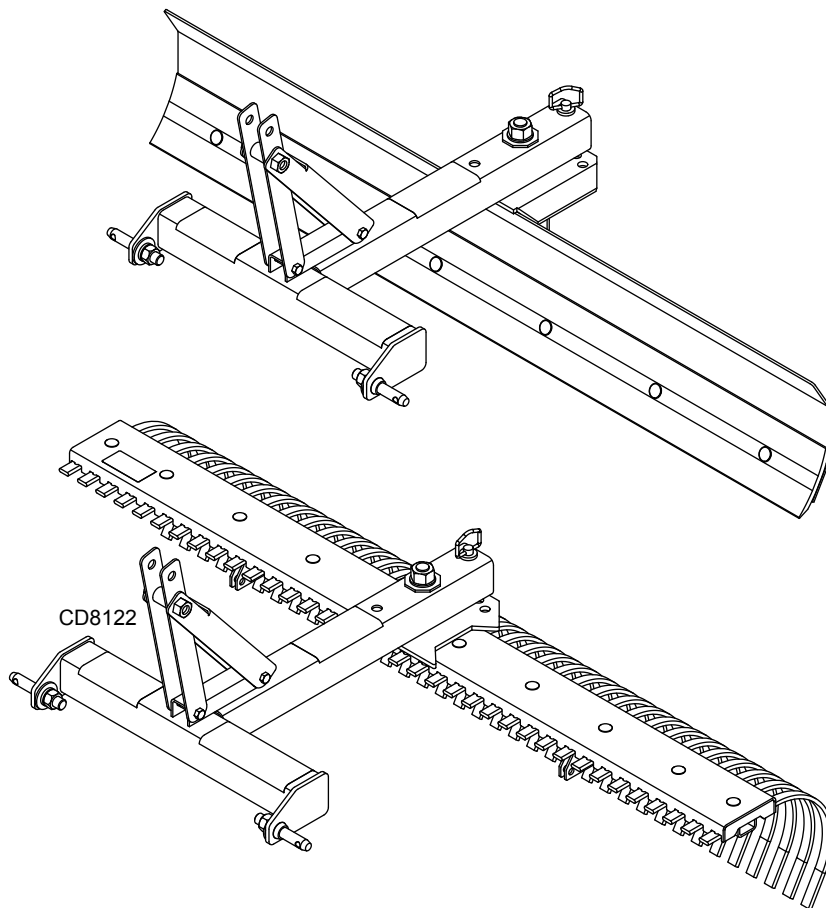
LRS84P

RBS72

LRS72

RBS84P

LRS96P



MAN1047
(Rev 07/02/2024)

WOODS[®]

OPERATOR'S MANUAL

TO THE DEALER:

Assembly and proper installation of this product is the responsibility of the Woods® dealer. Read manual instructions and safety rules. Make sure all items on the Dealer's Pre-Delivery and Delivery Checklists in the Operator's Manual are completed before releasing equipment to the owner.

The dealer must complete the online Product Registration form at the Woods Dealer Website which certifies that all Dealer Checklist items have been completed. Dealers can register all Woods product at dealer.WoodsEquipment.com under Product Registration.

Failure to register the product does not diminish customer's warranty rights.

TO THE OWNER:

Read this manual before operating your Woods equipment. The information presented will prepare you to do a better and safer job. Keep this manual handy for ready reference. Require all operators to read this manual carefully and become acquainted with all adjustment and operating procedures before attempting to operate. Replacement manuals can be obtained from your dealer. To obtain complete warranty details, visit WoodsEquipment.com/warranty. You may also request a hard copy by calling 1-800-319-6637 or mail your request to: Woods Equipment Company, Attn: Warranty Dept. 2606 South Illinois Route 2, Oregon, IL 61061. To locate your nearest dealer, check the Dealer Locator at www.WoodsEquipment.com, or in the United States and Canada call 1-800-319-6637.

The equipment you have purchased has been carefully engineered and manufactured to provide dependable and satisfactory use. Like all mechanical products, it will require cleaning and upkeep. Lubricate the unit as specified. Observe all safety information in this manual and safety decals on the equipment.

For service, your authorized Woods dealer has trained mechanics, genuine Woods service parts, and the necessary tools and equipment to handle all your needs.

Use only genuine Woods service parts. Substitute parts will void the warranty and may not meet standards required for safe and satisfactory operation. Record the model number and serial number of your equipment in the spaces provided:

Model: _____ **Date of Purchase:** _____
Serial Number: (see Safety Decal section for location) _____

Provide this information to your dealer to obtain correct repair parts.

Throughout this manual, the term **NOTICE** is used to indicate that failure to observe can cause damage to equipment. The terms **CAUTION**, **WARNING**, and **DANGER** are used in conjunction with the Safety-Alert Symbol (a triangle with an exclamation mark) to indicate the degree of hazard for items of personal safety.



This is the safety alert symbol. It is used to alert you to potential physical injury hazards. Obey all safety messages that follow this symbol to avoid possible injury or death.



Indicates a hazardous situation that, if not avoided, will result in death or serious injury.



Indicates a hazardous situation that, if not avoided, could result in death or serious injury.



Indicates a hazardous situation that, if not avoided, could result in minor or moderate injury.

**IMPORTANT
or NOTICE**

Is used to address practices not related to physical injury.

NOTE


Indicates helpful information.

2 Introduction

MAN1047
(07/02/2024)

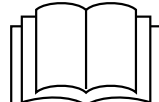
TABLE OF CONTENTS

INTRODUCTION	2
SPECIFICATIONS	4
GENERAL INFORMATION	4
SAFETY	5
SAFETY RULES	5
TRAINING	5
PREPARATION	5
OPERATION	5
MAINTENANCE	6
STORAGE	6
SAFETY & INSTRUCTIONAL DECALS	7
OPERATION	9
OPERATION	9
CONNECT REAR BLADE OR RAKE TO TRACTOR.	9
OPERATING TECHNIQUES	10
PARKING STAND PLACEMENT (OPTIONAL)	11
TAIL WHEEL ADJUSTMENT (OPTIONAL) (BASIC LANDSCAPE RAKE ONLY)	12
TAIL WHEEL ADJUSTMENT (OPTIONAL) (PREMIUM LANDSCAPE RAKE ONLY)	12
PRE-OPERATION CHECKLIST	13
MAINTENANCE	14
MAINTENANCE	14
REPLACING BLADE CUTTING EDGE	14
RAKE TINE REPLACEMENT	15
CLEANING	15
ASSEMBLY	16
ASSEMBLY	16
DEALER SET-UP INSTRUCTIONS	16
BLADE AND RAKE ASSEMBLY	16
TAIL WHEEL INSTALLATION (OPTIONAL) (LANDSCAPE RAKE ONLY)	18
QUICK HITCH BUSHING KIT (OPTIONAL)	19
PARKING STAND (OPTIONAL)	19
CATEGORY 0 / 1 HITCH PIN KIT (OPTIONAL)	20
END PLATE KIT (PREMIUM ONLY) (OPTIONAL)	20
SKID SHOE KIT (OPTIONAL)	20
DEALER CHECKLISTS	22
PARTS INDEX	23
APPENDIX	34
BOLT TORQUE CHART	34
BOLT SIZE CHART & ABBREVIATIONS	35



¡LEA EL INSTRUCTIVO!

Si no lee Ingles, pida ayuda a alguien que si lo lee para que le traduzca las medidas de seguridad.



This Operator's Manual should be regarded as part of the machine. Suppliers of both new and second-hand machines must make sure that this manual is provided with the machine.

SPECIFICATIONS

Models	RBS54 RBS60 RBS72	RBS60P RBS72P RBS84P	LRS52 LRS60 LRS72	LRS72P LRS84P LRS96P
Unit Weight (Pounds)	134, 142, 156	268, 288, 308	156, 168, 186	264, 288, 311
Horse Power	30 HP Max	20 - 45 HP	30 HP Max	20 - 45 HP
Working Width	54", 60", 72"	60", 72", 84"	52", 60", 72"	72", 84", 96"
Hitch Category	Cat 0/Limited Cat 1/Cat 1	Cat 1	Cat 0/Limited Cat 1/ Cat 1	Cat 1
Angle Adjustments - Increments	Forward - 5 @ 30° / Rearward - 5 @ 30°			
Offset Increments	None	12" Right or Left	None	None
Tilt Increments	None	15° Right or Left	None	None
Moldboard Height	13"	15"	NA	NA
Moldboard Thickness	3/16"	1/4"	NA	NA
Tine Dimensions	NA	NA	5/16" x 1"	5/16" x 1"
Tine Spacing	NA	NA	1"	1"
Tine Beam Dimensions	NA	NA	1.50" x 5.75"	1.88" x 5.88"
Options	Skid Shoes Parking Stand	Skid Shoes End Plates Parking Stand	Gauge Wheels Parking Stand	Gauge Wheels Parking Stand

GENERAL INFORMATION

The purpose of this manual is to assist you in operating and maintaining your equipment. Read it carefully. It furnishes information and instructions that will help you achieve years of dependable performance.

These instructions have been compiled from extensive field experience and engineering data. Some information may be general in nature, due to unknown and varying operating conditions. However, through experience and these instructions, you should be able to develop procedures suitable to your particular situation.

The illustrations and data used in this manual were current at the time of printing. However, due to possible inline production changes, your machine may vary slightly in detail. We reserve the right to redesign and change the machines as may be necessary without notification.

Throughout this manual, references are made to right and left directions. These are determined by standing behind the tractor facing the direction of forward travel.

SAFETY RULES



ATTENTION! BECOME ALERT! YOUR SAFETY IS INVOLVED!



Safety is a primary concern in the design and manufacture of our products. Unfortunately, our efforts to provide safe equipment can be wiped out by an operator's single careless act.

In addition to the design and configuration of equipment, hazard control and accident prevention are dependent upon the awareness, concern, judgement, and proper training of personnel involved in the operation, transport, maintenance and storage of equipment.

It has been said "The best safety device is an informed, careful operator." We ask you to be that kind of operator.

TRAINING

- **Safety instructions are important! Read all attachment and power unit manuals; follow all safety rules and safety decal information. (Replacement manuals and safety decals are available from your dealer. To locate your nearest dealer, check the Dealer Locator at www.WoodsEquipment.com, or in the United States and Canada call 1-800-319-6637.) Failure to follow instructions or safety rules can result in serious injury or death.**
- **If you do not understand any part of this manual and need assistance, see your dealer.**
- **Know your controls and how to stop engine and attachment quickly in an emergency.**
- **Operators must be responsible, trained, familiar with the instructions and be physically capable of the safe operation of the equipment, its attachments, and all controls. Do not allow anyone to operate this equipment without proper instructions.**
- **Never allow children or untrained persons to operate equipment.**

PREPARATION

- **Check that all hardware is properly installed. Always tighten to torque chart specifications unless instructed otherwise in this manual.**
- **Always wear relatively tight and belted clothing to avoid getting caught in moving parts. Wear sturdy, rough-soled work shoes and protective equipment for eyes, hair, hands, hearing, and head; and respirator or filter mask where appropriate.**
- **Make sure attachment is properly secured, adjusted, and in good operating condition.**

- **Power unit must be equipped with ROPS or ROPS cab and seat belt. Keep seat belt securely fastened. Falling off power unit can result in death from being run over or crushed. Keep foldable ROPS systems in "locked up" position at all times.**
- **Make sure all safety decals are installed. Replace if damaged. (See Safety Decals section for location.)**
- **Due to the mass of the (mounted) machine itself and loaded materials, the tractor machine combination can influence maneuverability and stability. A minimum 20% of tractor and equipment weight must be on the tractor front wheels when attachments are in transport position. Without this weight, front tractor wheels could raise up resulting in loss of steering. Without this weight, tractor could tip over, causing personal injury or death. The weight may be attained with front wheel weights, ballast in tires, front tractor weights or front loader. Weigh the tractor and equipment. DO NOT ESTIMATE.**

OPERATION

- **Consult local utilities before working. Know location of all underground cables, pipelines, overhead wires, and other hazards in working area and avoid contact.**
- **Keep bystanders away from equipment.**
- **Do not operate or transport equipment while under the influence of alcohol or drugs.**
- **Operate only in daylight or good artificial light.**
- **Keep hands, feet, hair, and clothing away from equipment while engine is running. Stay clear of all moving parts.**
- **Always comply with all state and local lighting and marking requirements.**
- **Never allow riders on power unit or attachment.**
- **Power unit must be equipped with ROPS or ROPS cab and seat belt. Keep seat belt securely fastened. Falling off power unit can result in death from being run over or crushed. Keep foldable ROPS systems in "locked up" position at all times.**
- **Always sit in power unit seat when operating controls or starting engine. Securely fasten seat belt, place transmission in neutral, engage brake, and ensure all other controls are disengaged before starting power unit engine.**
- **Look down and to the rear and make sure area is clear before operating in reverse.**

SAFETY RULES



ATTENTION! BECOME ALERT! YOUR SAFETY IS INVOLVED!



- Do not operate or transport on steep slopes.
- Do not stop, start, or change directions suddenly on slopes.
- Use extreme care and reduce ground speed on slopes and rough terrain.
- Watch for hidden hazards on the terrain during operation.
- Stop power unit and equipment immediately upon striking an obstruction. Turn off engine, set parking brake, remove key, inspect, and repair any damage before resuming operation.
- Before changing positions of manual swing, tilt, or angle positions:
 - Park tractor on level ground, apply parking brake, level implement boom, shut off tractor, and remove key.
 - Make manual changes slowly and carefully to prevent hazardous movement of mechanisms.
 - Never stand in positions where you could become entrapped during adjustment changes or if the 3-point hitch suddenly lowers.
- Always secure lock pins with safety pins to prevent lock pins from bumping out of the positioning holes. Failure to do so may result in accidents and/ or damage to blade.
- Before dismounting power unit or performing any service or maintenance, follow these steps: disengage power to equipment, lower the 3-point hitch and all raised components to the ground, operate valve levers to release any hydraulic pressure, set parking brake, stop engine, remove key, and unfasten seat belt.
- **NEVER GO UNDERNEATH EQUIPMENT.** Never place any part of the body underneath equipment or between moveable parts even when the engine has been turned off. Hydraulic system leak down, hydraulic system failures, mechanical failures, or movement of control levers can cause equipment to drop or rotate unexpectedly and cause severe injury or death.
 - Service work does not require going underneath.
 - Read Operator's Manual for service instructions or have service performed by a qualified dealer.

MAINTENANCE

- Before dismounting power unit or performing any service or maintenance, follow these steps: disengage power to equipment, lower the 3-point hitch and all raised components to the ground, operate valve levers to release any hydraulic pressure, set parking brake, stop engine, remove key, and unfasten seat belt.
- **NEVER GO UNDERNEATH EQUIPMENT.** Never place any part of the body underneath equipment or between moveable parts even when the engine has been turned off. Hydraulic system leak-down, hydraulic system failures, mechanical failures, or movement of control levers can cause equipment to drop or rotate unexpectedly and cause severe injury or death.
 - Service work does not require going underneath.
 - Read Operator's Manual for service instructions or have service performed by a qualified dealer.
- Always wear relatively tight and belted clothing to avoid getting caught in moving parts. Wear sturdy, rough-soled work shoes and protective equipment for eyes, hair, hands, hearing, and head; and respirator or filter mask where appropriate.
- Make sure attachment is properly secured, adjusted, and in good operating condition.
- Keep all persons away from operator control area while performing adjustments, service, or maintenance.
- Tighten all bolts, nuts and screws to torque chart specifications. Check that all cotter pins are installed securely to ensure equipment is in a safe condition before putting unit into service.
- Make sure all safety decals are installed. Replace if damaged. (See Safety Decals section for location.)

STORAGE

- Block equipment securely for storage.
- Keep children, bystanders and animals away from storage area.
- Follow manual instructions for storage.

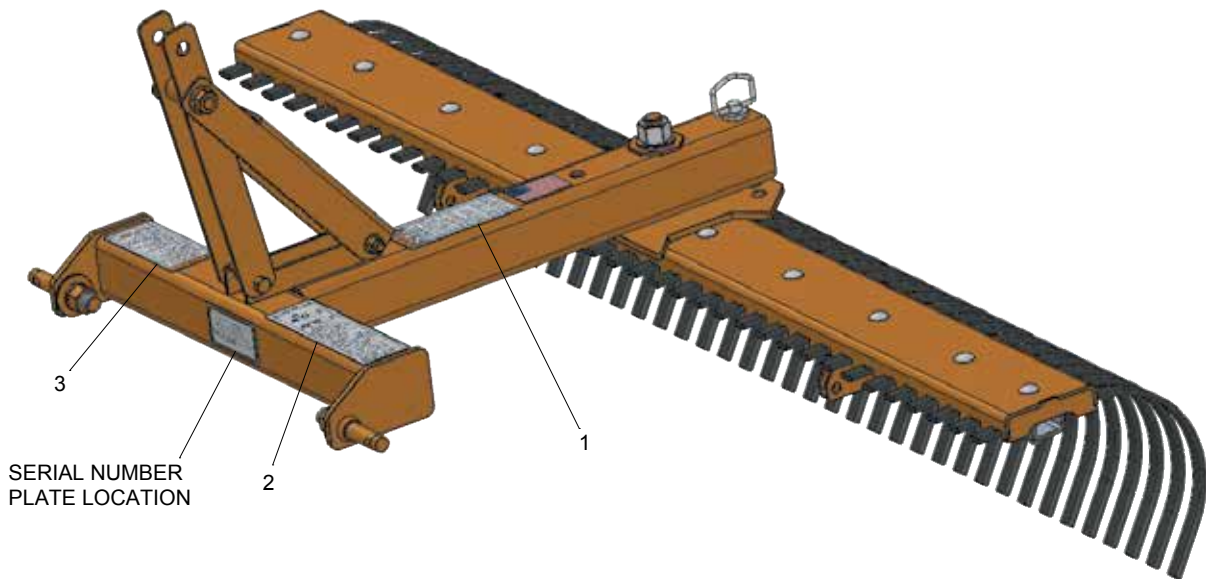
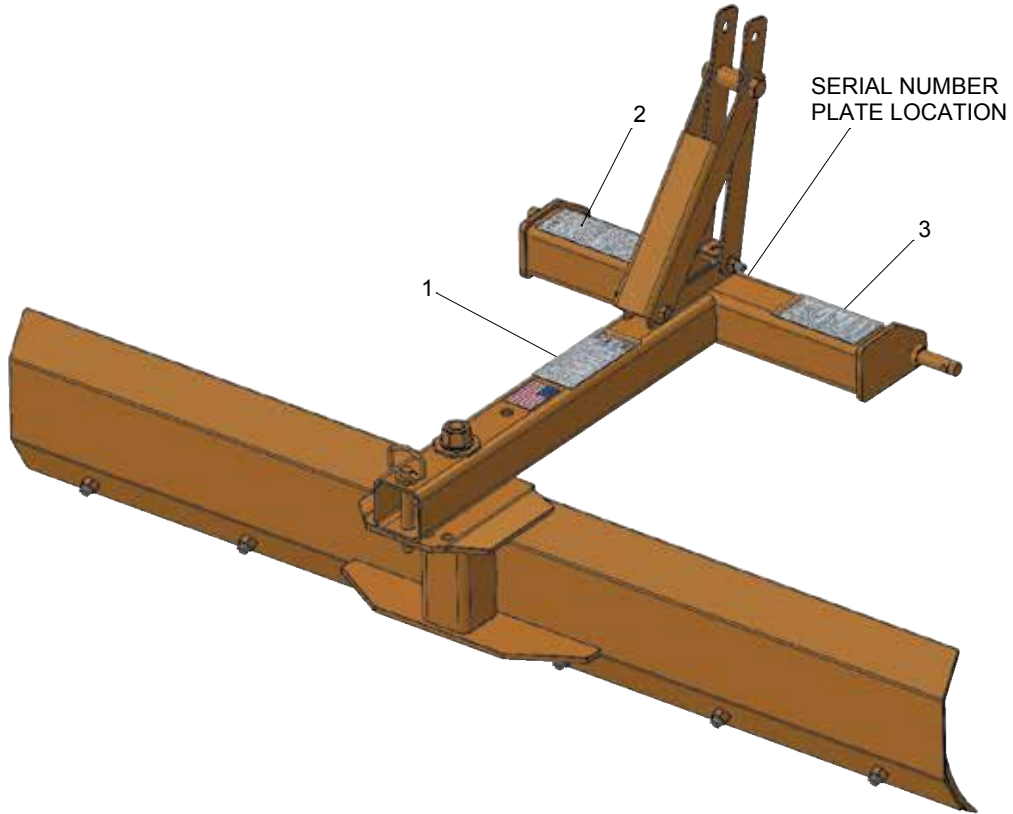
SAFETY & INSTRUCTIONAL DECALS



ATTENTION! BECOME ALERT! YOUR SAFETY IS INVOLVED!



Replace Immediately If Damaged!



MAN1047
(07/02/2024)

Safety 7

SAFETY & INSTRUCTIONAL DECALS



ATTENTION! BECOME ALERT! YOUR SAFETY IS INVOLVED!



Replace Immediately If Damaged!

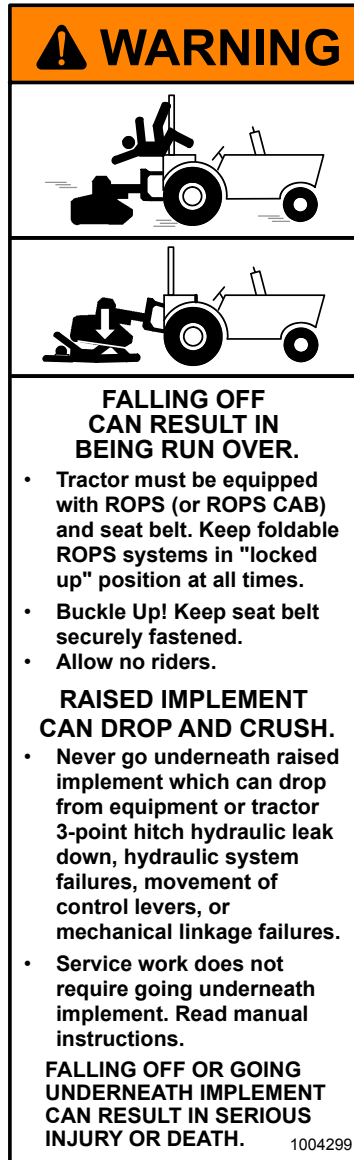
Serial Number Plate



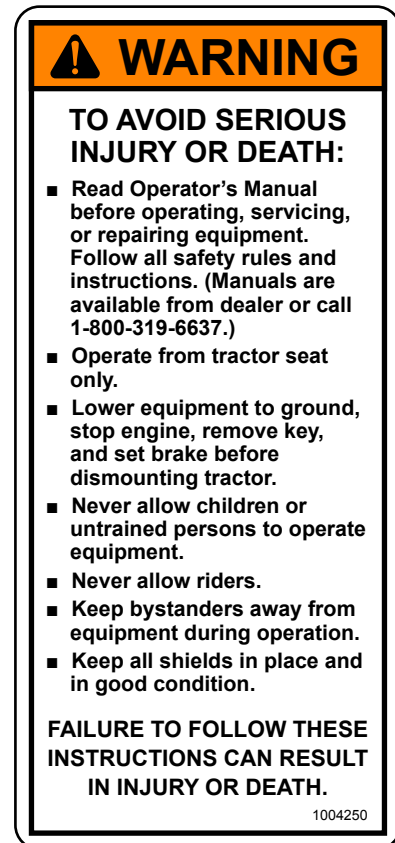
1 - PN 1002941



2 - PN 1004299



3 - PN 1004250



BE CAREFUL!

Use a clean, damp cloth to clean safety decals.

Avoid spraying too close to decals when using a pressure washer; high-pressure water can enter through very small scratches or under edges of decals causing them to peel or come off.

Replacement safety decals can be ordered free from your Woods dealer. To locate your nearest dealer, check the Dealer Locator at www.WoodsEquipment.com, or in the United States and Canada call 1-800-319-6637.

OPERATION

The operator is responsible for the safe operation of this equipment. Operators must be instructed in and be capable of the safe operation of the equipment, its attachments and all controls. Do not allow anyone to operate this equipment without proper instructions.

This equipment is designed for a wide range of applications. The blade may be used for scraping, leveling, grading and backfilling. The rake may be used for loosening, leveling and clearing soil of debris.

The blade or rake may be angled to windrow debris to the side for removal.

⚠ WARNING

- Never allow children or untrained persons to operate equipment.
- Keep bystanders away from equipment.
- Never allow riders on power unit or attachment.
- Due to the mass of the (mounted) machine itself and loaded materials, the tractor machine combination can influence maneuverability and stability. A minimum 20% of tractor and equipment weight must be on the tractor front wheels when attachments are in transport position. Without this weight, front tractor wheels could raise up resulting in loss of steering. Without this weight, tractor could tip over, causing personal injury or death. The weight may be attained with front wheel weights, ballast in tires, front tractor weights or front loader. Weigh the tractor and equipment. DO NOT ESTIMATE.

⚠ CAUTION

- Always wear relatively tight and belted clothing to avoid entanglement in moving parts. Wear sturdy, rough-soled work shoes and protective equipment for eyes, hair, hands, hearing, and head; and respirator or filter mask where appropriate.

CONNECT REAR BLADE OR RAKE TO TRACTOR

1. This rake or blade should be mounted on tractors with a maximum drawbar rating of 30 engine hp, not to exceed 2400 lbs.
2. Adjust or remove tractor drawbar to eliminate interference with blade or rake.

Category 1

1. Place tractor 3-point lower lift arms over outer hitch pins.
2. Secure with klik pin (not provided) as shown in Figure 1.



Figure 1. Lower Lift Arm Attachment and Top Link Connection, Category 1

3. Connect tractor top link by inserting tractor clevis pin into top hitch point on rear blade frame assembly and secure (Figure 1).

Quick Hitch (Category 1 Only)

The Rear Blade and Landscape Rake will attach to a Category 1 quick hitch.

An optional parking stand is available for use with a quick hitch.

1. Use Bushing Kit 1023725 when using a quick coupler.
2. Place bushings over mounting pin and secure into position with roll pin.
3. Align quick hitch with mounting pins and second hole from top on rear blade frame assembly.

Category 0 (Optional)

1. Place tractor 3-point lower lift arms over inner hitch pins.
2. Secure with safety pins (not provided) as shown in Figure 2.
3. Connect tractor top link to top hitch point on rear blade frame assembly and secure.



Figure 2. Lower Lift Arm Attachment, Category 0

Category 0 / 1 Hitch Pin Kit (Optional)

1. Remove existing hitch pins.
2. Place hitch pin (1) through rear blade assembly.
3. Secure with flat washer (2), lock washer (3) and hex nut (4).
4. Repeat for opposite side. See Figure 3.

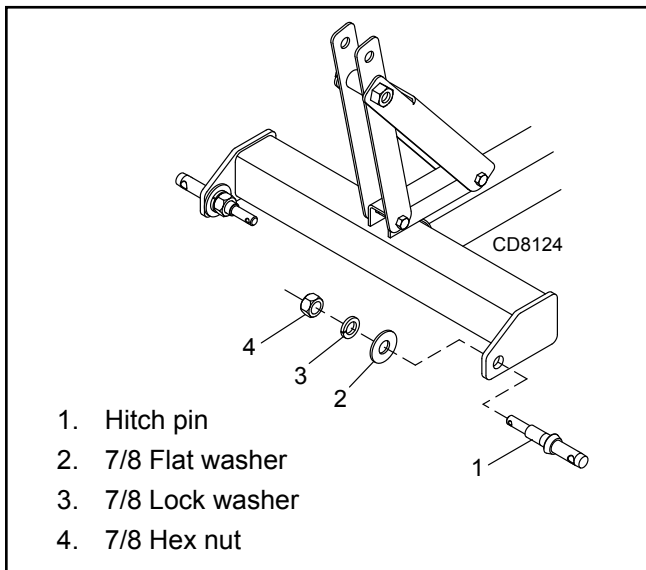


Figure 3. Hitch Pin Kit (Optional)

OPERATING TECHNIQUES

Level the A-frame and boom with 3-point connecting links and top link. Adjusting the top link length will change the fore and aft pitch of the tool.

Lengthening the top link will cause the tool to contact the ground with a sharper pitch and feed itself into the ground more readily.

When using the rake tool, you may need to adjust the tail wheels after adjusting pitch to maintain the desired working depth.

Position 3-point lift arm sway blocks or tighten sway chains to eliminate side sway. Install side braces if necessary.

Reversing (Blade or Rake)

For most tractors, the blade or rake may be rotated 360 degrees without unhooking from the tractor. To rotate without unhooking, pull hitch pin assembly.

Rotate to desired position; replace hitch pin assembly.

Angling (Blade or Rake)

Remove hitch pin assembly.

The blade or rake may be set 15 degrees or 30 degrees to the left or right for forward grading.

Tilting (Premium Series Blade Only)

The blade may be tilted 15 degrees either direction.

Loosen bolts (2) but do not remove. Tilt moldboard to desired position. Figure 4.

Tighten bolts (2) to proper torque specification.

Offsetting (Premium Series Blade Only)

The blade may be offset right or left 12" by moving pivot assembly along moldboard offset adjusting slot

Loosen bolts (2) but do not remove. Slide moldboard along offset adjusting slot until desired offset is obtained. Figure 4.

Tighten bolts (2) to proper torque specification.

Only offset blade when operating in light material such as sand, loose soil, or snow.

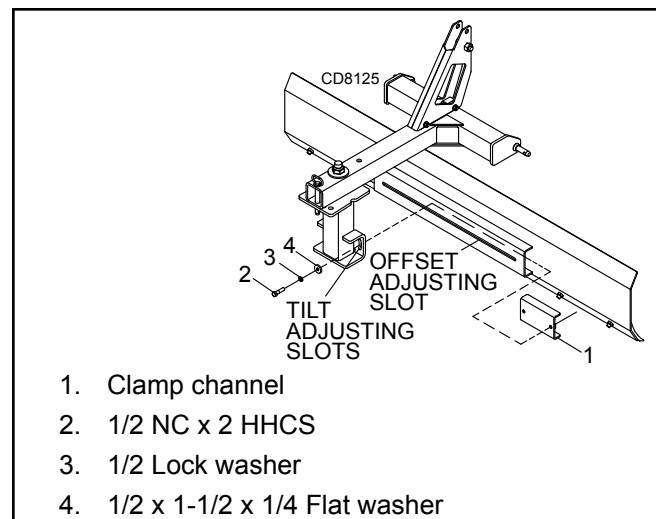


Figure 4. Moldboard Offset and Tilt Adjustment

Backfilling

Reverse blade for backfilling ditches or trenches (see Reversing).

The rake may also be used in light backfilling applications.

Cutting Ditches (Premium Series Blade Only)

Loosen bolts (2) but do not remove. Tilt moldboard left or right until desired blade angle is obtained.

Tighten bolts (2) to proper torque specification.

Angle blade to bring lower end forward. Bring lower point near the center line of the rear wheel track using 3-point hitch height adjustment. Figure 4.

PARKING STAND PLACEMENT (OPTIONAL)

Assembly

1. Assemble parking stand holder (1) toward center of frame assembly using 3/8 hex head cap screw (3), 3/8 flat washers (4) and secure with 3/8 hex nut (5). Do not allow parking stand holder to cover any portion of safety decal. Figure 5.

Operating Position

1. Slide parking stand (2) into holder (1) and align lowest hole in parking stand with hole in parking stand holder.
2. Secure parking stand into position using lock pin (6).

Storage Position

1. Raise tractor 3-point arms.
2. Remove parking stand (2) from operating position.
3. Align hole in parking stand holder with appropriate hole in parking stand according to your particular blade or rake and secure into position with lock pin (6).

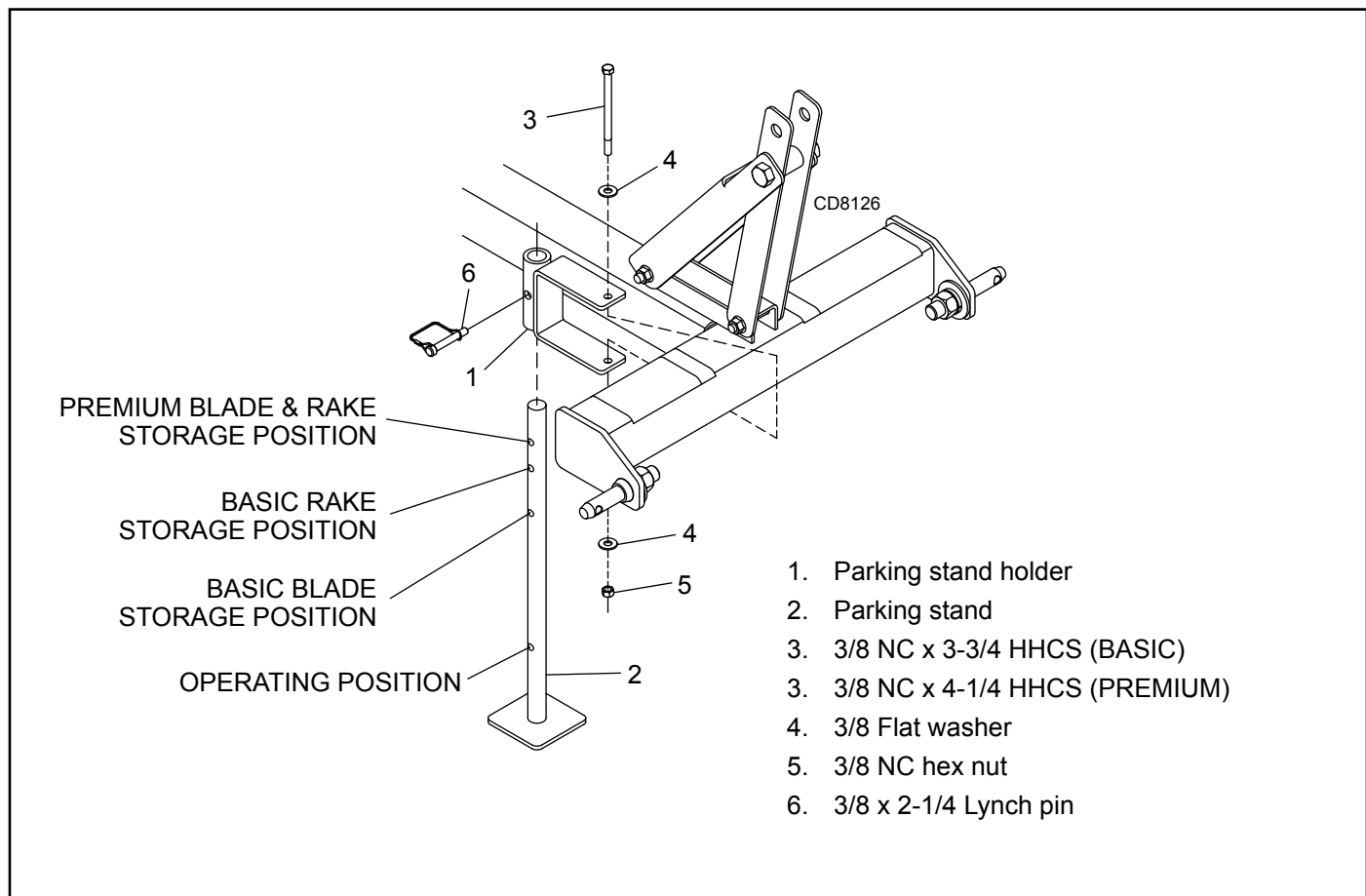
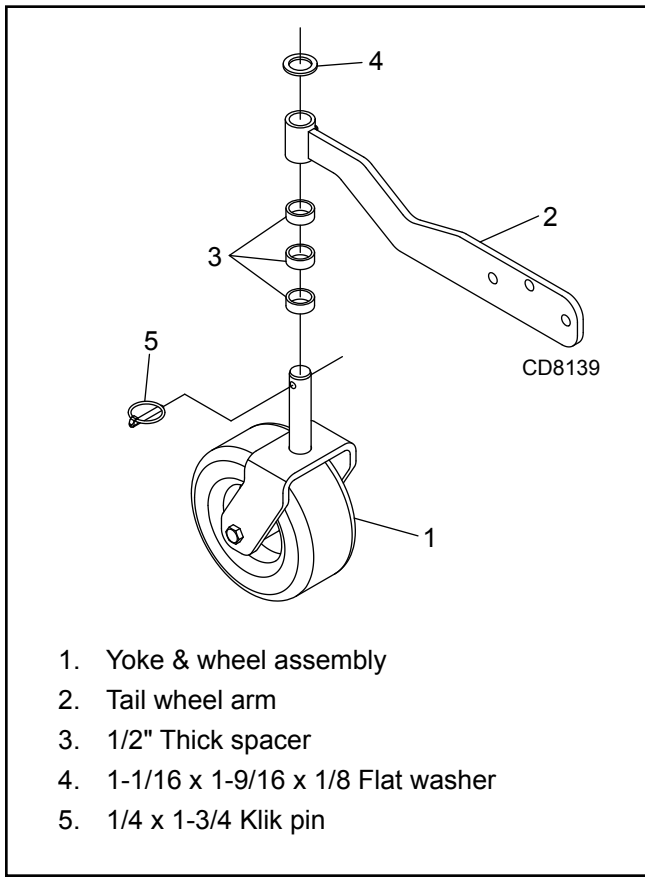


Figure 5. Parking Stand Assembly (Optional)

**TAIL WHEEL ADJUSTMENT (OPTIONAL)
(BASIC SERIES BLADE ONLY)**



1. Yoke & wheel assembly
2. Tail wheel arm
3. 1/2" Thick spacer
4. 1-1/16 x 1-9/16 x 1/8 Flat washer
5. 1/4 x 1-3/4 Klik pin

Figure 6. Tail Wheel Adjustment (Basic)

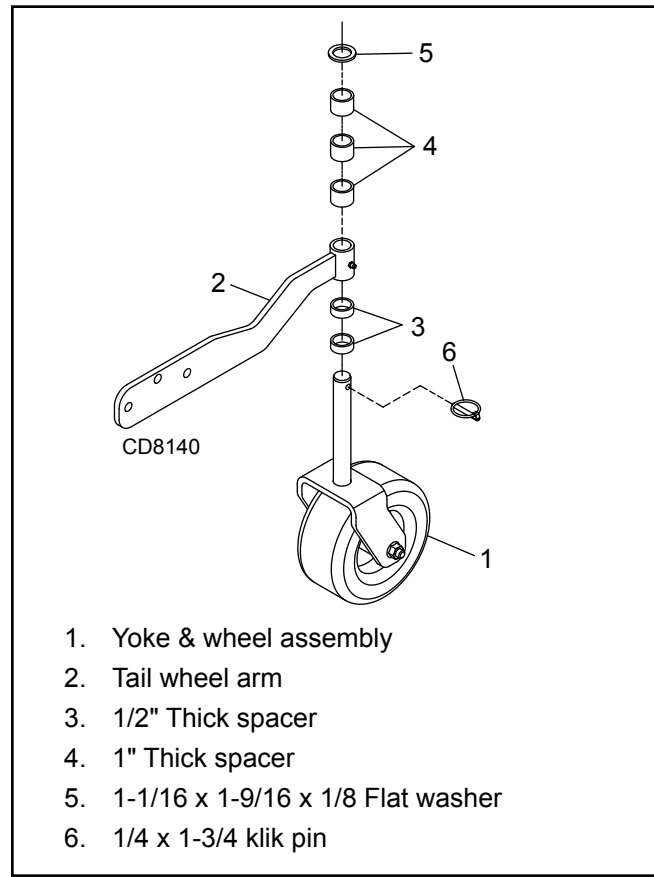
IMPORTANT

- **When optional tail wheels are installed behind rake, you must raise rake and tail wheels off of ground before operating in reverse.**

1. Raise rake until wheels clear the ground.
2. Remove klik pin (5) from yoke shaft while holding wheel. Remove flat washer (4).
3. Add or remove 1/2" thick spacers (3) above or below tail wheel arm (2).
4. Placing spacers below tail wheel arm raises the rake height.
5. When height is established, secure assembly by installing flat washer (4) and klik pin (5).
6. Adjust the pitch of the rake to maintain the desired working depth.
7. Position 3-point lift arm sway blocks or tighten sway chains to eliminate side sway. Install side braces if necessary.

NOTE: Use a good multi-purpose grease to lubricate pivot tube and tail wheel every 8 hours of operation.

**TAIL WHEEL ADJUSTMENT (OPTIONAL)
(PREMIUM SERIES BLADE ONLY)**



1. Yoke & wheel assembly
2. Tail wheel arm
3. 1/2" Thick spacer
4. 1" Thick spacer
5. 1-1/16 x 1-9/16 x 1/8 Flat washer
6. 1/4 x 1-3/4 klik pin

Figure 7. Tail Wheel Adjustment (Premium)

IMPORTANT

- **When optional tail wheels are installed behind rake, you must raise rake and tail wheels off of ground before operating in reverse.**

1. Raise rake until wheels clear the ground.
2. Remove klik pin (6) from yoke shaft while holding wheel. Remove flat washer (5).
3. Add or remove any combination of 1/2" thick spacers (3) and 1" thick spacers (4) above or below tail wheel arm (2).
4. Placing any spacer below tail wheel arm raises the rake height.
5. When height is established, secure assembly by installing flat washer (5) and klik pin (5).
6. Adjust the pitch of the rake to maintain the desired working depth.
7. Position 3-point lift arm sway blocks or tighten sway chains to eliminate side sway. Install side braces if necessary.

NOTE: Use a good multi-purpose grease to lubricate pivot tube and tail wheel every 8 hours of operation.

PRE-OPERATION CHECKLIST

(OWNER'S RESPONSIBILITY)

- _____ Review and follow all safety rules and safety decal instructions on pages 5 through 8.
- _____ Check that all safety decals are installed and in good condition. Replace if damaged.
- _____ Check that all hardware is properly installed and secured.
- _____ Check that equipment is properly and securely attached to tractor.
- _____ Do not allow riders.
- _____ Make sure tractor ROPS or ROPS cab and seat belt are in good condition. Keep foldable ROPS systems in "locked up" position at all times. Keep seat belt securely fastened during operation.
- _____ Check that blade cutting edge is in good condition.
- _____ Consult local utilities before digging. Know location of and avoid contacting all underground cables, pipelines, overhead wires and other hazards in digging area.

MAINTENANCE

The information in this section is written for operators who possess basic mechanical skills. If you need help, your dealer has trained service technicians available. For your protection, read and follow all safety information in this manual.

! WARNING

- Before dismounting power unit or performing any service or maintenance, follow these steps: disengage power to equipment, lower the 3-point hitch and all raised components to the ground, operate valve levers to release any hydraulic pressure, set parking brake, stop engine, remove key, and unfasten seat belt.
- NEVER GO UNDERNEATH EQUIPMENT. Never place any part of the body underneath equipment or between moveable parts even when the engine has been turned off. Hydraulic system leak-down, hydraulic system failures, mechanical failures, or movement of control levers can cause equipment to drop or rotate unexpectedly and cause severe injury or death.
 - Service work does not require going underneath implement.
 - Read Operator's Manual for service instructions or have service performed by a qualified dealer.
- Keep all persons away from operator control area while performing adjustments, service, or maintenance.

! CAUTION

- Always wear relatively tight and belted clothing to avoid getting caught in moving parts. Wear sturdy, rough-soled work shoes and protective equipment for eyes, hair, hands, hearing, and head; and respirator or filter mask where appropriate.

REPLACING BLADE CUTTING EDGE

Remove Cutting Edge

1. Remove plow bolts (3), and hex lock nuts (4).
2. Remove cutting edge (2) from moldboard (1) and replace with new cutting edge. Re-install hardware previously removed.

Reverse Cutting Edge

1. Remove plow bolts (3), and hex lock nuts (4).
2. Remove cutting edge (2) from moldboard and reverse cutting edge with sharp edge down. Reinstall hardware previously removed.

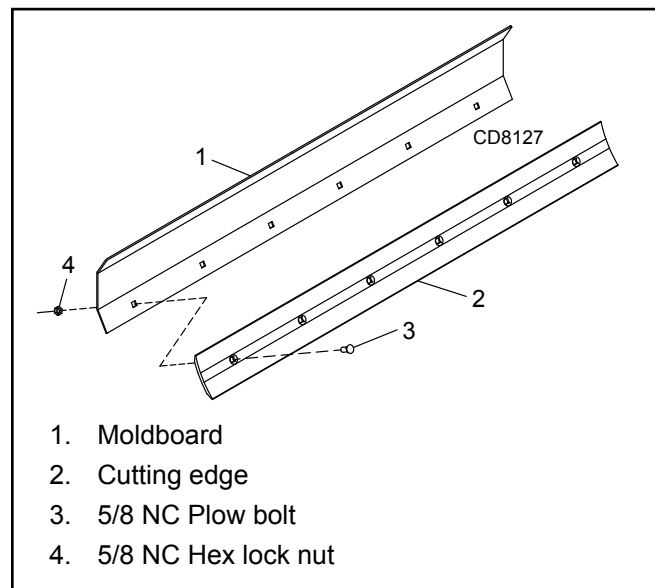


Figure 8. Cutting Edge Replacement

RAKE TINE REPLACEMENT

NOTE: Tines should be replaced when they cannot be reformed to their original configuration.

NOTE: Tine clamp channel (3) does not need to be completely removed to remove tines.

1. Loosen carriage bolts (4) and flange lock nuts (5) holding tine beam (2) and tine clamp channel (3) together. It is not necessary to completely remove hardware. Remove old tine.
2. Inset new tine, hole end first, into slot in rear of tine beam (2) and assemble hole in tine onto nub in front of tine channel. Tighten carriage bolts (4) and flange lock nuts (5).

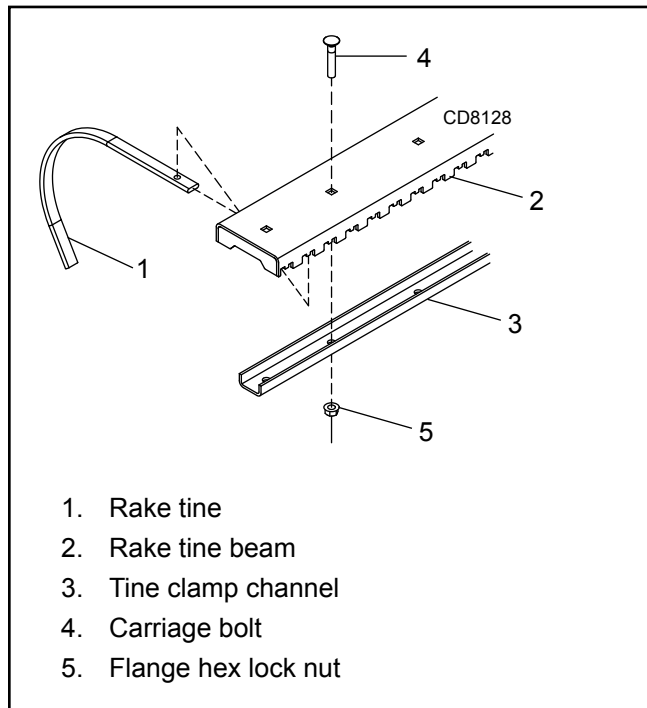


Figure 9. Rake Tine Replacement

CLEANING

After Each Use

- Remove large debris such as clumps of dirt, grass, crop residue, etc. from machine.
- Inspect machine and replace worn or damaged parts.
- Replace any safety decals that are missing or not readable.

Periodically or Before Extended Storage

- Clean large debris such as clumps of dirt, grass, crop residue, etc. from machine.
 - Remove the remainder using a low-pressure water spray.
1. Be careful when spraying near scratched or torn safety decals or near edges of decals as water spray can peel decal off surface.
 2. Be careful when spraying near chipped or scratched paint as water spray can lift paint.
 3. If a pressure washer is used, follow the advice of the pressure washer manufacturer.
- Inspect machine and replace worn or damaged parts.
 - Sand down scratches and the edges of areas of missing paint and coat with Woods spray paint of matching color (purchase from your Woods dealer).
 - Replace any safety decals that are missing or not readable (supplied free by your Woods dealer). See Safety Decals section for location drawing.

ASSEMBLY

DEALER SET-UP INSTRUCTIONS

Assembly of this Rear Blade/Landscape Rake is the responsibility of the Woods dealer. It should be delivered to the owner completely assembled, lubricated and adjusted for normal cutting conditions.

The Rear Blade/Landscape Rake is shipped partially assembled. Assembly will be easier if components are aligned and loosely assembled before tightening hardware. Recommended torque values for hardware are located on page 34.

⚠ WARNING

- Before dismounting power unit or performing any service or maintenance, follow these steps: disengage power to equipment, lower the 3-point hitch and all raised components to the ground, operate valve levers to release any hydraulic pressure, set parking brake, stop engine, remove key, and unfasten seat belt.
- NEVER GO UNDERNEATH EQUIPMENT. Never place any part of the body underneath equipment or between moveable parts even when the engine has been turned off. Hydraulic system leak-down, hydraulic system failures, mechanical failures, or movement of control levers can cause equipment to drop or rotate unexpectedly and cause severe injury or death.
 - Service work does not require going underneath implement.
 - Read Operator's Manual for service instructions or have service performed by a qualified dealer.
- Keep all persons away from operator control area while performing adjustments, service, or maintenance.

⚠ CAUTION

- Always wear relatively tight and belted clothing to avoid getting caught in moving parts. Wear sturdy, rough-soled work shoes and protective equipment for eyes, hair, hands, hearing, and head; and respirator or filter mask where appropriate.

BLADE AND RAKE ASSEMBLY

Blade and Rake Assembly (Basic)

1. Assemble frame assembly onto threaded stud on moldboard or tine beam assembly and secure with flat washer (12) and nylock nut (13).
2. Remove hitch channel (3) from frame assembly. Reassemble channel to frame with 1/2 NC x 3-1/2 hex cap screw (7) and 1/2 NC flange lock nut (9).
3. Assemble top holes of hitch channel to middle hole of hitch links (4) using 3/4 NC x 3-1/2 hex cap screw (10) and 3/4 NC flange lock nut (11). Assemble sleeve (5) between hitch links.
4. Install 3/4 x 5 hitch pin (14) thru hole in frame assembly and into desired hole in pivot plate of moldboard or tine beam.

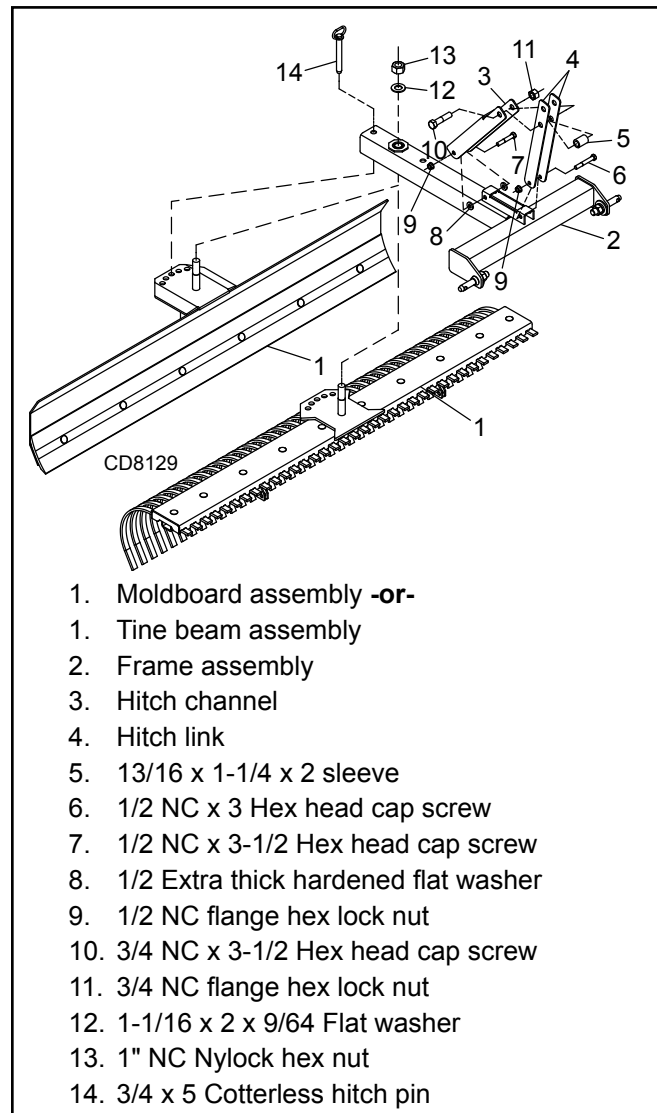


Figure 10. Basic Blade and Rake Assembly

Blade Assembly (Premium)

1. Remove clamp channel (4) from pivot assembly (3). Insert clamp channel into main channel on back of moldboard (2). Reinstall 1/2 NC x 2 hex cap screw (5), 1/2 lockwasher (6) and 1/2 x 1-1/2 x 1/4 flat washer (7) to secure pivot to moldboard.
2. Support moldboard and pivot assembly in an upright position.
3. Place blade frame assembly (1) onto threaded stud on pivot assembly and secure with nylock nut (15).
4. Assemble left and right mast plates (8 & 9) to frame assembly (1) using 1/2 NC x 3-1/2 hex cap screws (10) and 1/2 NC flange lock nuts (11).
5. Assemble 13/16 x 1-1/4 x 1-3/4 sleeve (12) between mast plates and secure with 3/4 NC x 3-1/2 hex cap screw (13) and 3/4 NC flange lock nut (14). Torque all hardware.

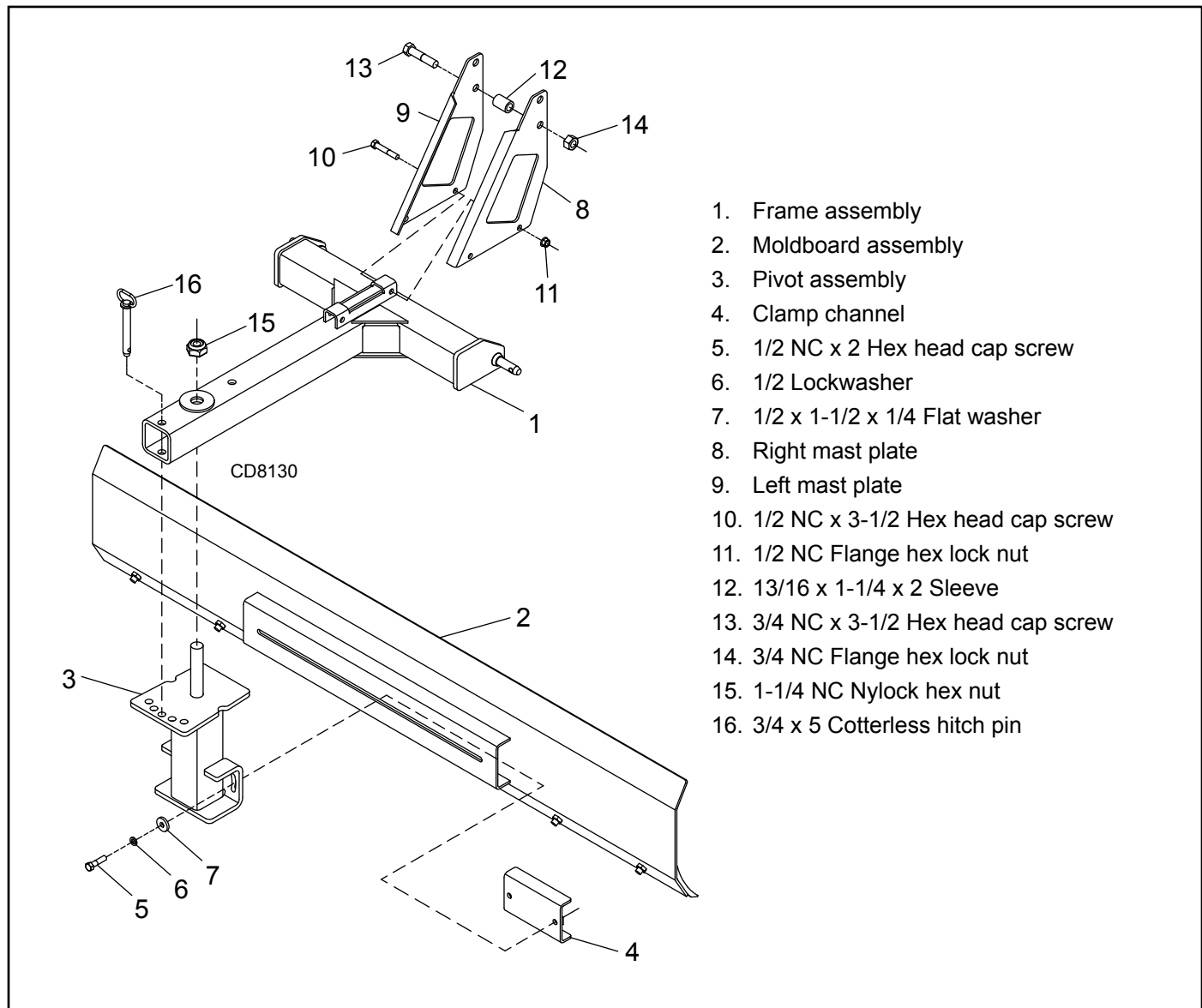


Figure 11. Premium Blade Assembly

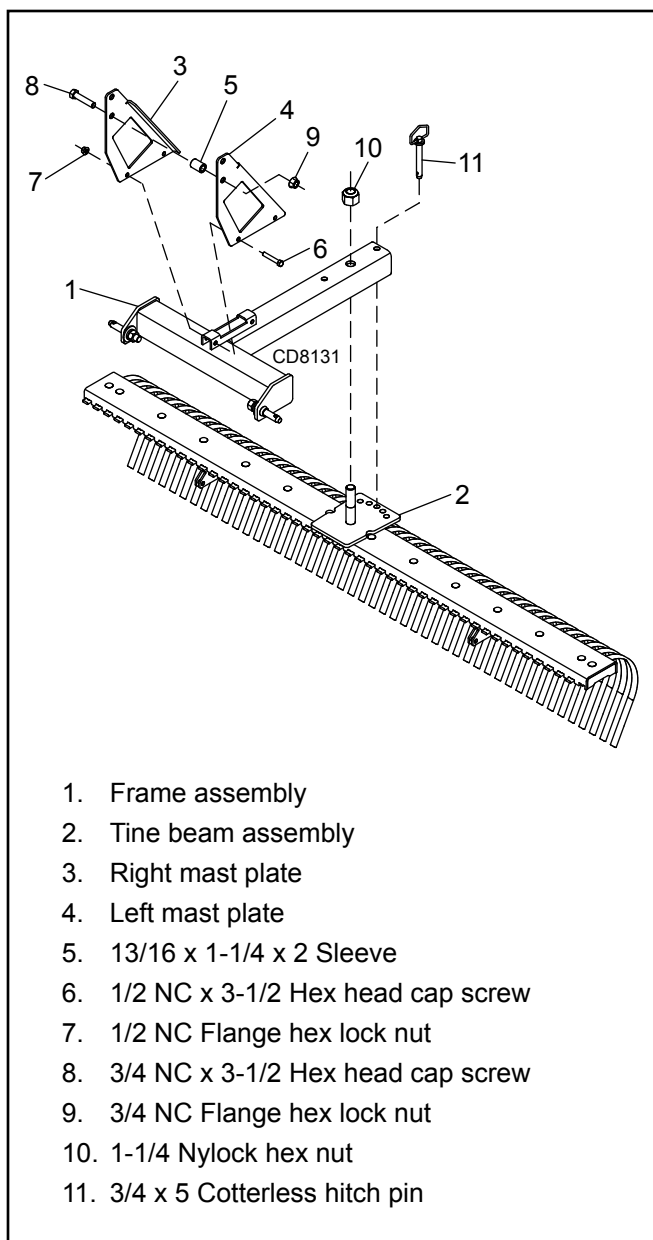


Figure 12. Premium Rake Assembly

Rake Assembly (Premium)

1. Assemble frame assembly (1) onto threaded stud on tine beam assembly (2) and secure with nylock nut (10). Install hitch pin (11) thru hole in frame and into desired hole in tine beam assembly.
2. Assemble left and right mast plates (3 & 4) to frame assembly (1) using 1/2 NC x 3-1/2 hex cap screws (6) and 1/2 NC flange lock nuts (7).
3. Assemble 13/16 x 1-1/4 x 1-3/4 sleeve (5) between mast plates and secure with 3/4 NC x 3-1/2 hex cap screw (8) and 3/4 NC flange lock nut (9). Torque all hardware.

TAIL WHEEL INSTALLATION (OPTIONAL) **(LANDSCAPE RAKE ONLY)**

1. Remove landscape rake from tractor 3-point lift arms if attached.
2. Roll landscape rake over with tines pointing upward.
3. Place jack stands or suitable blocking device under tine beam to raise tine beam approximately 8 to 10 inches.
4. Place tail wheel arm assembly (2) between lugs on tine beam and align holes.
5. Secure into position using three 1/2 NC x 1-1/2 hex cap screws (3) and 1/2 NC flange lock nuts (4).

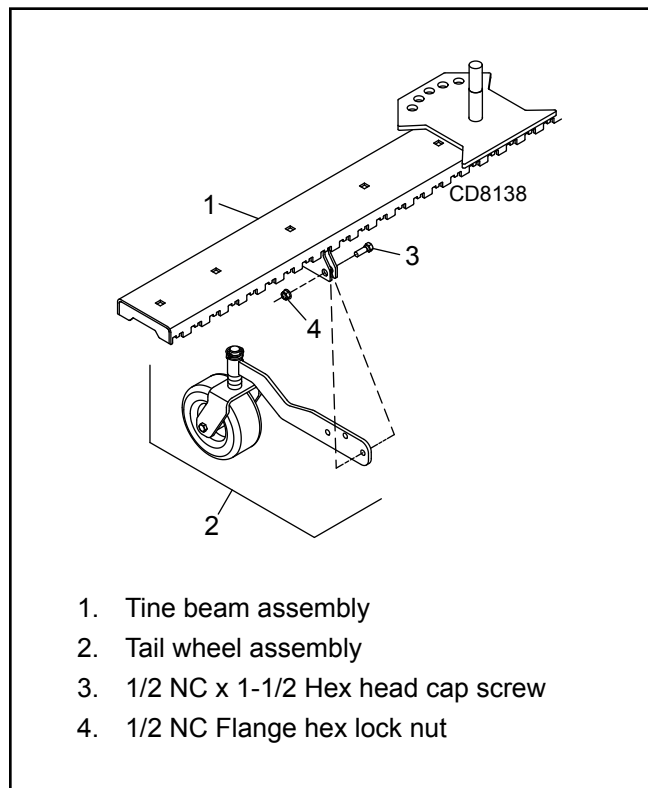


Figure 13. Tail Wheel Installation

QUICK HITCH BUSHING KIT (OPTIONAL)

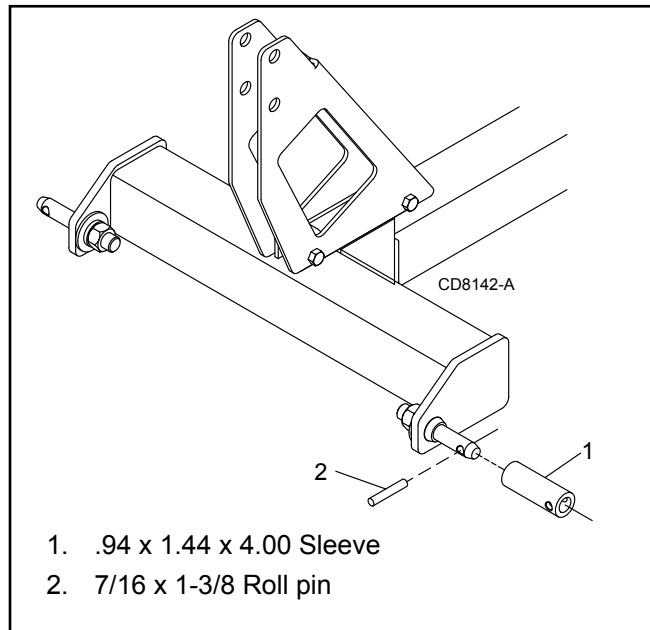


Figure 14. Quick Hitch Bushing Kit

1. Place sleeve (1) over lower 3-point pin, secure with roll pin (2). Repeat for opposite side.

PARKING STAND (OPTIONAL)

Assembly

1. Assemble parking stand holder (1) toward center of frame assembly using 3/8 NC hex cap screw (3), 3/8 flat washers (4) and secure with 3/8 NC hex nut (5). Do not allow parking stand holder to cover any portion of safety decal. Figure 17.

Operating Position

1. Slide parking stand (2) into holder (1) and align lowest hole in parking stand with hole in parking stand holder.
2. Secure parking stand into position using lock pin (6).

Storage Position

1. Raise tractor 3-point arms.
2. Remove parking stand from operating position.
3. Align hole in parking stand holder with appropriate hole in parking stand according to your particular blade or rake and secure into position with lock pin (6).

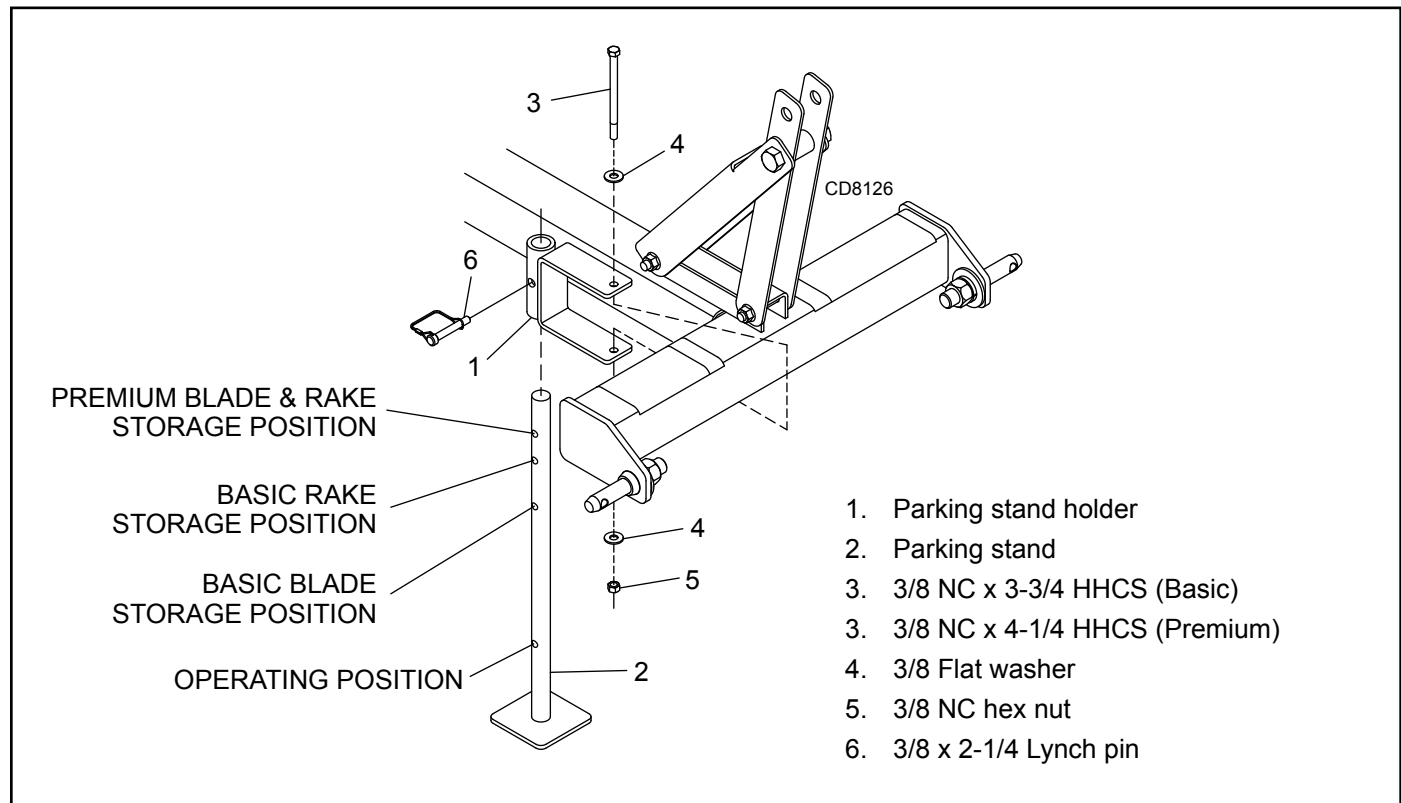


Figure 15. Parking Stand

CATEGORY 0 / 1 HITCH PIN KIT (OPTIONAL)

1. Remove existing hitch pins.
2. Place hitch pin (1) through rear blade assembly.
3. Secure with flat washer (2), lock washer (3) and hex nut (4).
4. Repeat for opposite side. See Figure 18.

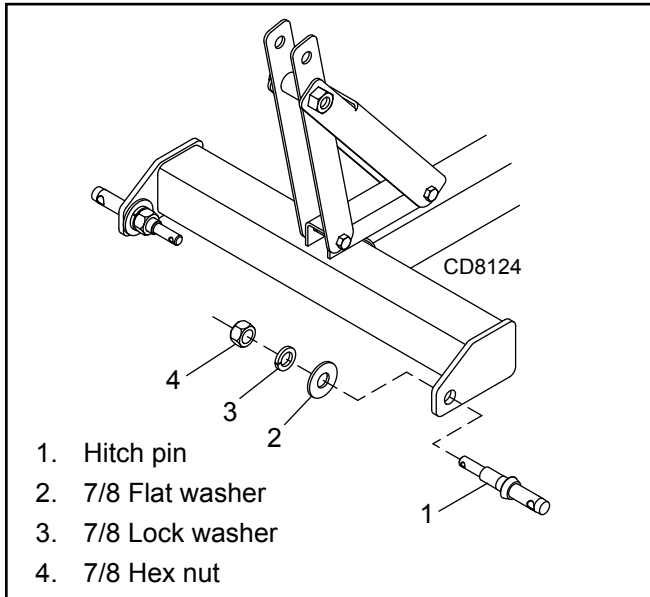


Figure 16. Hitch Pin Kit

END PLATE KIT (RBS PREMIUM ONLY) (OPTIONAL)

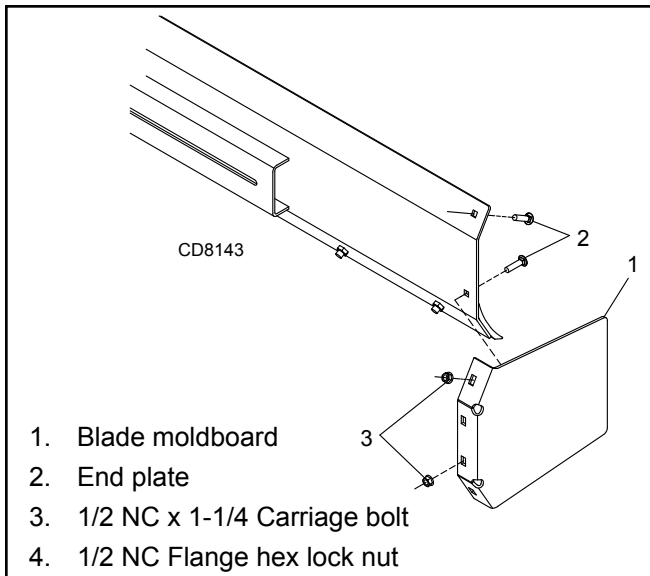


Figure 17. End Plate Installation

1. Assemble one end plate (2) to each end of blade using two carriage bolts (3) and flange lock nuts (4) on each end plate.

SKID SHOE KIT (OPTIONAL)

1. Remove plow bolts from each end of cutting edge.
2. Attach skid shoe (1) to rear of moldboard with 5/8 NC x 2 plow bolt (2), 5/8 hardened flat washer (3) and 5/8 NC hex lock nut (4), supplied in kit.
3. Adjust skid shoe to desired height.
4. Repeat steps for opposite side of moldboard.

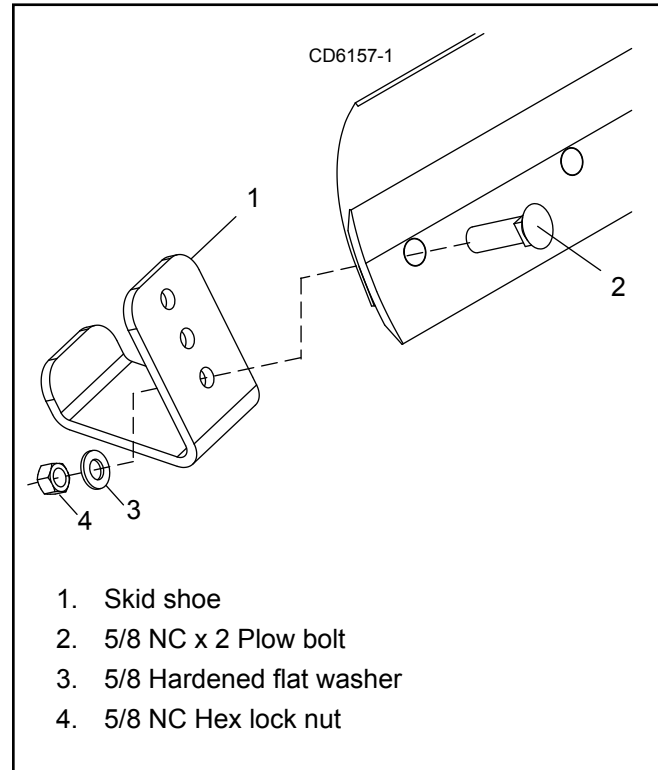


Figure 18. Basic Skid Shoe Installation

SKID SHOE KIT (OPTIONAL)

1. Remove plow bolts from each end of cutting edge.
2. Attach right and left skid shoe brackets (3 & 4) to rear of moldboard with plow bolts (8), washers (9), and lock nuts (10) supplied in kit. Top of skid shoe brackets should angle slightly toward edge of blade.
3. Adjust skid shoe to desired height using washers (7) and spacers (5). One washer must be installed between the shoe bracket and the spacers.
4. Make sure skid shoe rotates freely to prevent premature skid pad wear.

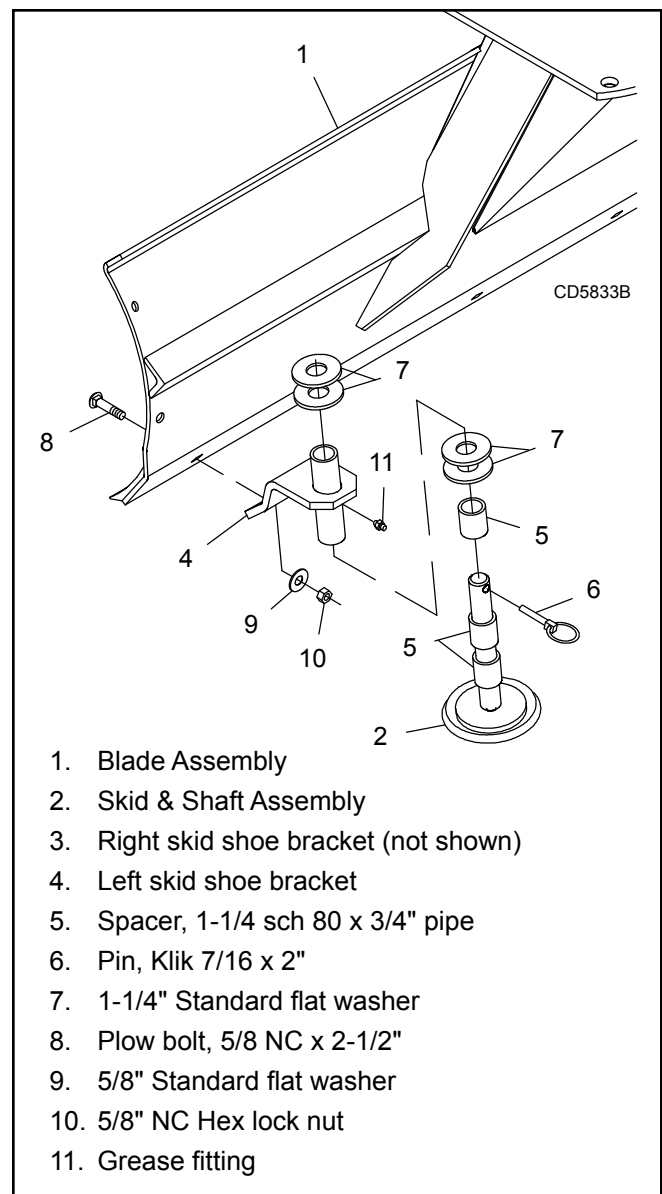


Figure 19. Premium Skid Shoe Installation

DEALER CHECKLISTS

PRE-DELIVERY CHECKLIST (DEALER'S RESPONSIBILITY)

Inspect the equipment thoroughly after assembly to be certain it is set up properly before delivering it to the customer.

The following checklist is a reminder of points to inspect. Check off each item if it is found satisfactory or after proper adjustment is made.

- _____ Check that all safety decals are installed and in good condition. Replace if damaged.
- _____ Properly attach implement to tractor and make all necessary adjustments.
- _____ Check parking stand for proper operation.
- _____ Check all bolts to be sure they are properly torqued.
- _____ Check that all cotter pins and safety pins are properly installed. Replace if damaged.

DELIVERY CHECKLIST (DEALER'S RESPONSIBILITY)

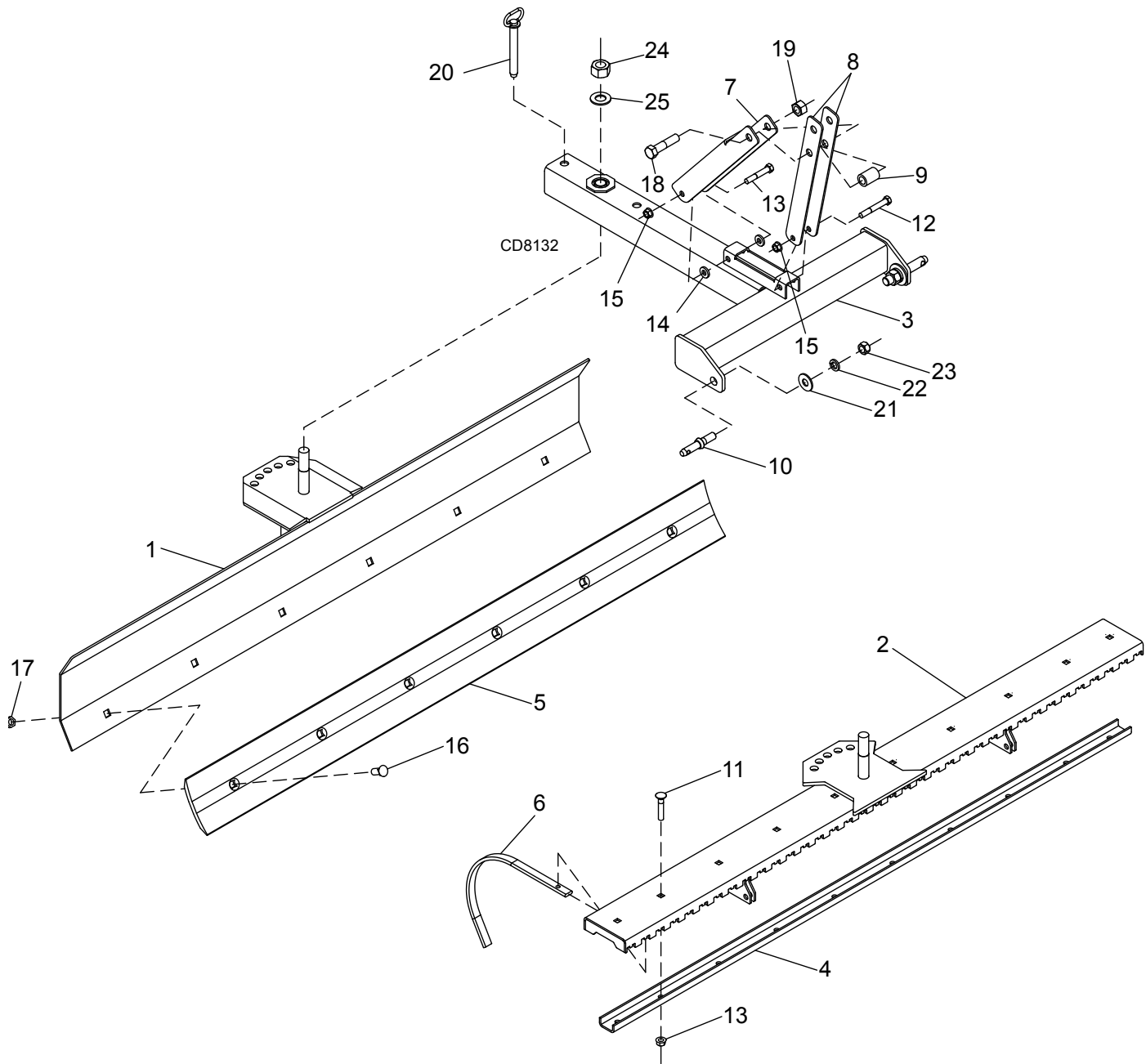
- _____ Show customer how to make adjustments.
- _____ Instruct customer how to lubricate and explain importance of lubrication.
- _____ Point out the safety decals. Explain their meaning and the need to keep them in place and in good condition. Emphasize the increased safety hazards when instructions are not followed.
- _____ Present Operator's Manual and request that customer and all operators read it before operating equipment. Point out the manual safety rules, explain their meanings and emphasize the increased safety hazards that exist when safety rules are not followed.
- _____ Explain to customer the potential crushing hazards of going underneath raised equipment. Instruct customer that service work does not require going underneath unit and never to do so.
- _____ Show customer the safe, proper procedures to be used when mounting, dismounting, and storing equipment.
- _____ Due to the mass of the (mounted) machine itself and loaded materials, the tractor machine combination can influence maneuverability and stability. A minimum 20% of tractor and equipment weight must be on the tractor front wheels when attachments are in transport position. Without this weight, front tractor wheels could raise up resulting in loss of steering. Without this weight, tractor could tip over, causing personal injury or death. The weight may be attained with front wheel weights, ballast in tires, front tractor weights or front loader. Weigh the tractor and equipment. DO NOT ESTIMATE.
- _____ Make customer aware of optional equipment available so that customer can make proper choices as required.



REAR BLADE & LANDSCAPE RAKE
RBS54, RBS60, RBS72
LRS52, LRS60, LRS72
RBS60P, RBS72P, RBS84P
LRS72P, LRS84P, LRS96P

RBS & LRS BASIC ASSEMBLY 24 - 25
RBS ASSEMBLY 26 - 27
LRS ASSEMBLY 28 - 29
RBS & LRS PARKING STAND (OPTIONAL) 30
CATEGORY 1 QUICK HITCH BUSHING KIT (OPTIONAL) 30
LRS TAIL WHEEL (OPTIONAL) 31
BASIC SKID SHOE KIT (OPTIONAL) 31
LRS TAIL WHEEL PREMIUM (OPTIONAL) 32
CATEGORY 0/1 HITCH PIN KIT (OPTIONAL). 32
PREMIUM SKID SHOE KIT (OPTIONAL) 33
RBS PREMIUM END PLATE KIT (OPTIONAL) 33

RBS54, RBS60 & RBS72 ASSEMBLY LRS52, LRS60 & LRS72 ASSEMBLY



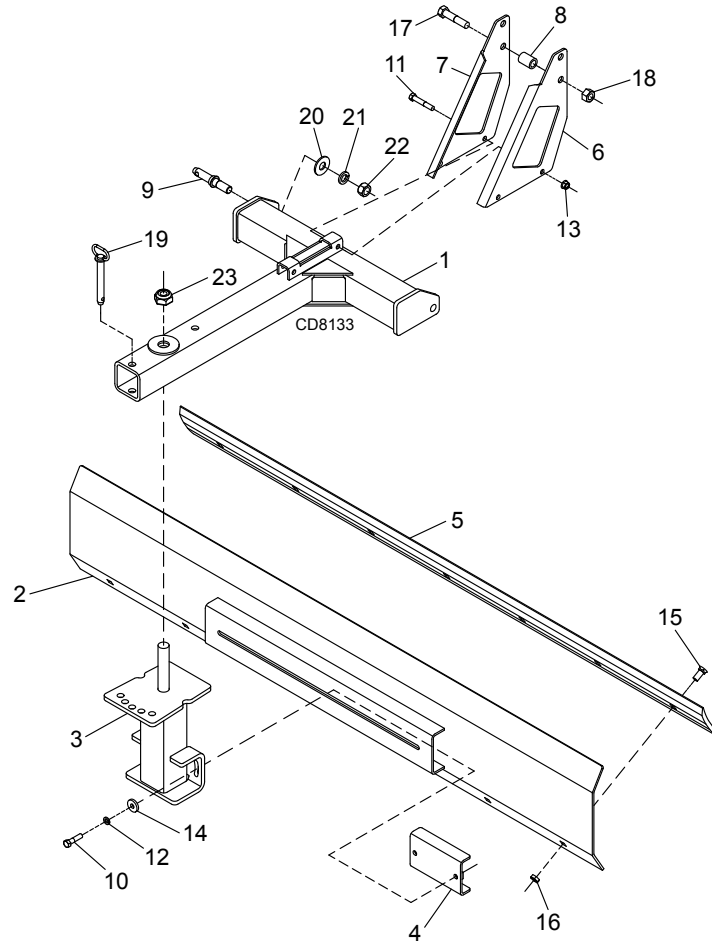
24 Parts

MAN1047
(07/02/2024)

RBS54, RBS60 & RBS72 ASSEMBLY LRS52, LRS60 & LRS72 ASSEMBLY

REF	PART	QTY	DESCRIPTION	REF	PART	QTY	DESCRIPTION
1	103741154RP	1	RBS54 Moldboard	15	11900 *	A/R	1/2 NC Flange hex lock nut
1	103741160RP	1	RBS60 Moldboard	16	25265	A/R	5/8 NC x 1-1/2 Plow bolt
1	103741172RP	1	RBS72 Moldboard	17	6239 *	A/R	5/8 NC Hex lock nut
2	103743152RP	1	LRS52 Tine beam	18	15007 *	1	3/4 NC x 3-1/2 HHCS, GR5
2	103743160RP	1	LRS60 Tine beam	19	302207 *	1	3/4 NC Flange hex lock nut
2	103743172RP	1	LRS72 Tine beam	20	1025163	1	3/4 x 4-1/4 Hitch pin (For rakes) -or-
3	1043075	1	Hitch frame	20	1004643	1	3/4 x 5 Hitch pin (For blades)
4	103742752RP	1	LRS52 Clamp channel -or-	21	4258 *	2	7/8 Std flat washer
4	103742760RP	1	LRS60 Clamp channel -or-	22	30008 *	2	7/8 Lockwasher
4	103742772RP	1	LRS72 Clamp channel	23	30007 *	2	7/8 NF Hex nut
5	1037454	1	RBS54 Cutting edge -or-	24	1035379	1	1 NC Nylock hex nut
5	1037460	1	RBS60 Cutting edge -or-	25	1037449	1	1.06 x 2 x .14 Hardened flat washer
5	1037472	1	RBS72 Cutting edge	NS	1037439	1	Decal, Model, Woods RB54S
6	1005370	A/R	LRS Rake tine	NS	1037440	1	Decal, Model, Woods RBS60
7	1037446RP	1	Hitch channel	NS	1037441	1	Decal, Model, Woods RBS72
8	1037445RP	2	Hitch link	NS	1037442	1	Decal, Model, Woods LRS52
9	1004661RP	1	Sleeve, .812 x 1.25 x 2.00	NS	1037443	1	Decal, Model, Woods LRS60
10	33661RP	2	Category 1 mounting pin (Includes lockwasher 22 & nut 23)	NS	1037444	1	Decal, Model, Woods LRS72
11	54982 *	A/R	1/2 NC x 2-3/4 Carriage bolt, GR5	NOTE: For safety decals, see pages 7 and 8. Order decals separately.			
12	3489 *	1	1/2 NC x 3 HHCS, GR5	A/R As Required			
13	1637 *	1	1/2 NC x 3-1/2 HHCS, GR5	HHCS Hex Head Cap Screw			
14	57811	2	1/2 Extra thick hardened flat washer	* Standard Hardware, obtain locally			

RBS60, RBS72 & RBS84 (PREMIUM) ASSEMBLY



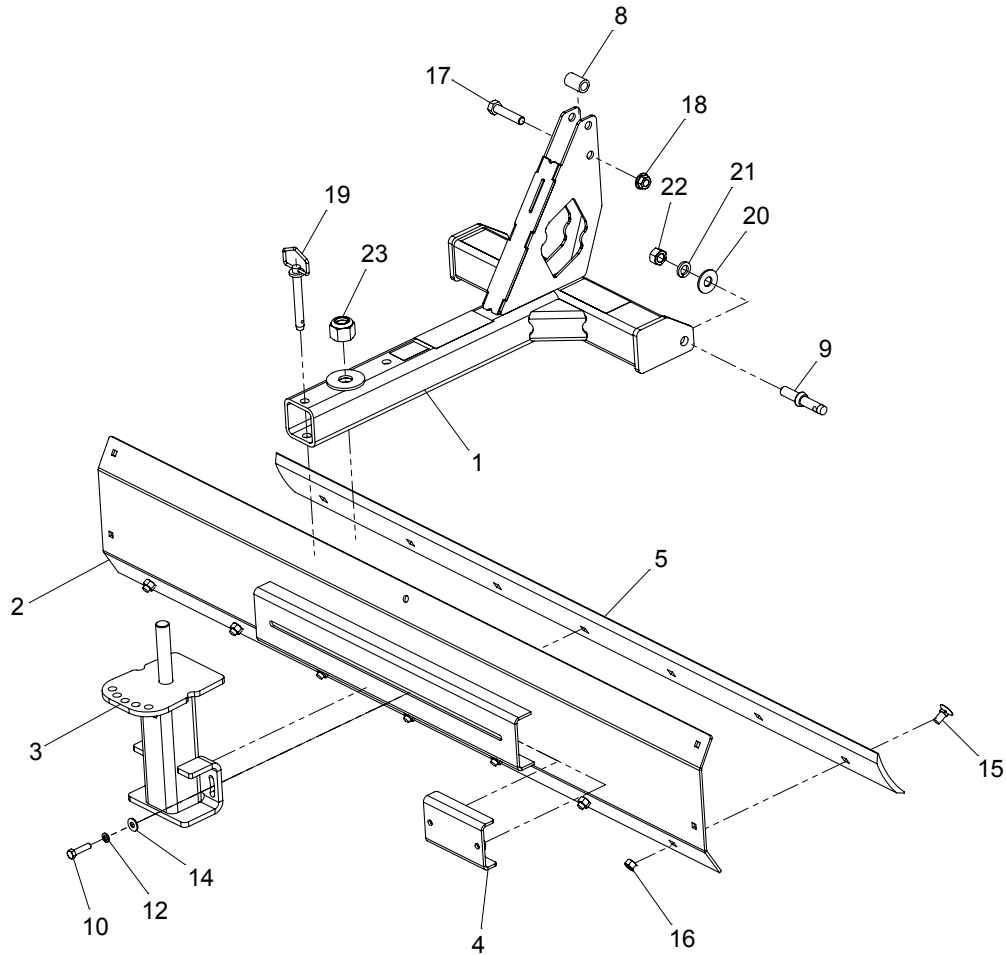
REF	PART	QTY	DESCRIPTION	REF	PART	QTY	DESCRIPTION
1	1043076	1	Hitch frame	14	1036161	2	.53 x 1.25 x .25 Belleville washer
2	103751160RP	1	RBS60P Moldboard -or-	15	25265	A/R	5/8 NC x 1-1/2 Plow bolt
2	103751172RP	1	RBS72P Moldboard -or-	16	6239 *	A/R	5/8 NC Hex lock nut
2	103751184RP	1	RBS84P Moldboard	17	15007 *	1	3/4 NC x 3-1/2 HHCS, GR5
3	1037508	1	Pivot asy (Includes 4, 10, 12, 14, 19, 23)	18	302207 *	1	3/4 NC Flange hex lock nut
4	1037509RP	1	Clamp channel	19	1004643	1	3/4 x 5 Hitch pin
5	32280	1	RBS60 Cutting edge -or-	20	4258 *	2	7/8 Std flat washer
5	25258	1	RBS72 Cutting edge -or-	21	30008 *	2	7/8 Lock washer
5	46440	1	RBS84 Cutting edge	22	30007 *	2	7/8 NF Hex nut
6	1037504RP	1	Right mast plate	23	1037524	1	1-1/4 NC Nylock hex nut, GR8
7	1037503RP	1	Left mast plate	NS	1037539	1	Decal, Model, Woods RBS60P
8	1004661RP	1	Sleeve, .812 x 1.25 x 2.00	NS	1037540	1	Decal, Model, Woods RBS72P
9	33661RP	2	Category 1 mounting pin (Includes lockwasher 21 & nut 22)	NS	1037541	1	Decal, Model, Woods RBS84P
10	3699 *	2	1/2 NC x 2 HHCS, GR5	NOTE: For safety decals, see pages 7 and 8. Order decals separately.			
11	1637 *	2	1/2 NC x 3-1/2 HHCS, GR5	A/R As Required			
12	855 *	2	1/2 Lock washer	HHCS Hex Head Cap Screw			
13	11900 *	2	1/2 NC Flange hex lock nut	* Standard Hardware, obtain locally			

26 Parts

MAN1047
(07/02/2024)

RBS60, RBS72 & RBS84 (PREMIUM) ASSEMBLY

(WITH WELDED MAST PLATES 2023 OR NEWER)

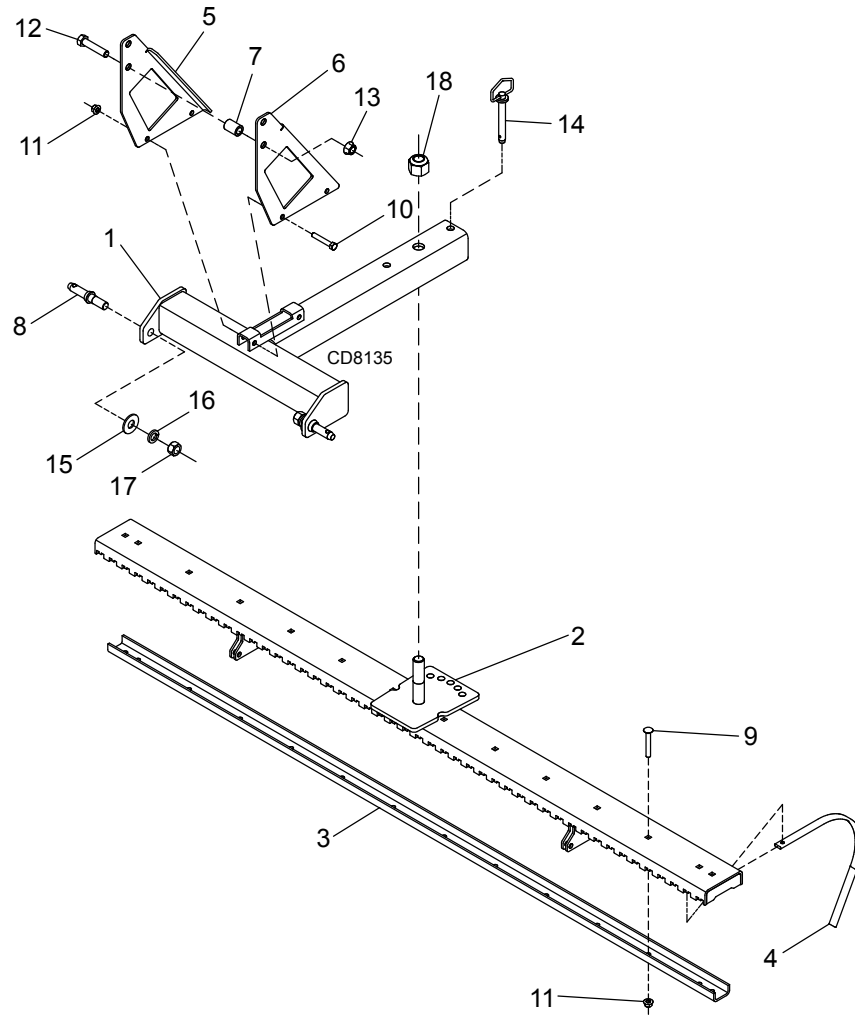


REF	PART	QTY	DESCRIPTION	REF	PART	QTY	DESCRIPTION
1	639756	1	Hitch frame	15	25265	A/R	5/8 NC x 1-1/2 Plow bolt
2	103751160RP	1	RBS60P Moldboard -or-	16	6239 *	A/R	5/8 NC Hex lock nut
2	103751172RP	1	RBS72P Moldboard -or-	17	15007 *	1	3/4 NC x 3-1/2 HHCS, GR5
2	103751184RP	1	RBS84P Moldboard	18	302207 *	1	3/4 NC Flange hex lock nut
3	1037508	1	Pivot asy (Includes 4, 10, 12, 14, 19, 23)	19	1004643	1	3/4 x 5 Hitch pin
4	1037509RP	1	Clamp channel	20	4258 *	2	7/8 Std flat washer
5	32280	1	RBS60 Cutting edge -or-	21	30008 *	2	7/8 Lock washer
5	25258	1	RBS72 Cutting edge -or-	22	30007 *	2	7/8 NF Hex nut
5	46440	1	RBS84 Cutting edge	23	1037524	1	1-1/4 NC Nylock hex nut, GR8
8	1004661	1	Sleeve, .812 x 1.25 x 2.00	NS	1037539	1	Decal, Model, Woods RBS60P
9	33661RP	2	Category 1 mounting pin (Includes lockwasher 21 & nut 22)	NS	1037540	1	Decal, Model, Woods RBS72P
10	3699 *	2	1/2 NC x 2 HHCS, GR5	NS	1037541	1	Decal, Model, Woods RBS84P
11	1637 *	2	1/2 NC x 3-1/2 HHCS, GR5	NOTE: For safety decals, see pages 7 and 8. Order decals separately.			
12	855 *	2	1/2 Lock washer	A/R As Required			
13	11900 *	2	1/2 NC Flange hex lock nut	HHCS Hex Head Cap Screw			
14	1036161	2	.53 x 1.25 x .25 Belleville washer	* Standard Hardware, obtain locally			

MAN1047
(07/02/2024)

Parts 27

LRS72, LRS84 & LRS96 (PREMIUM) ASSEMBLY



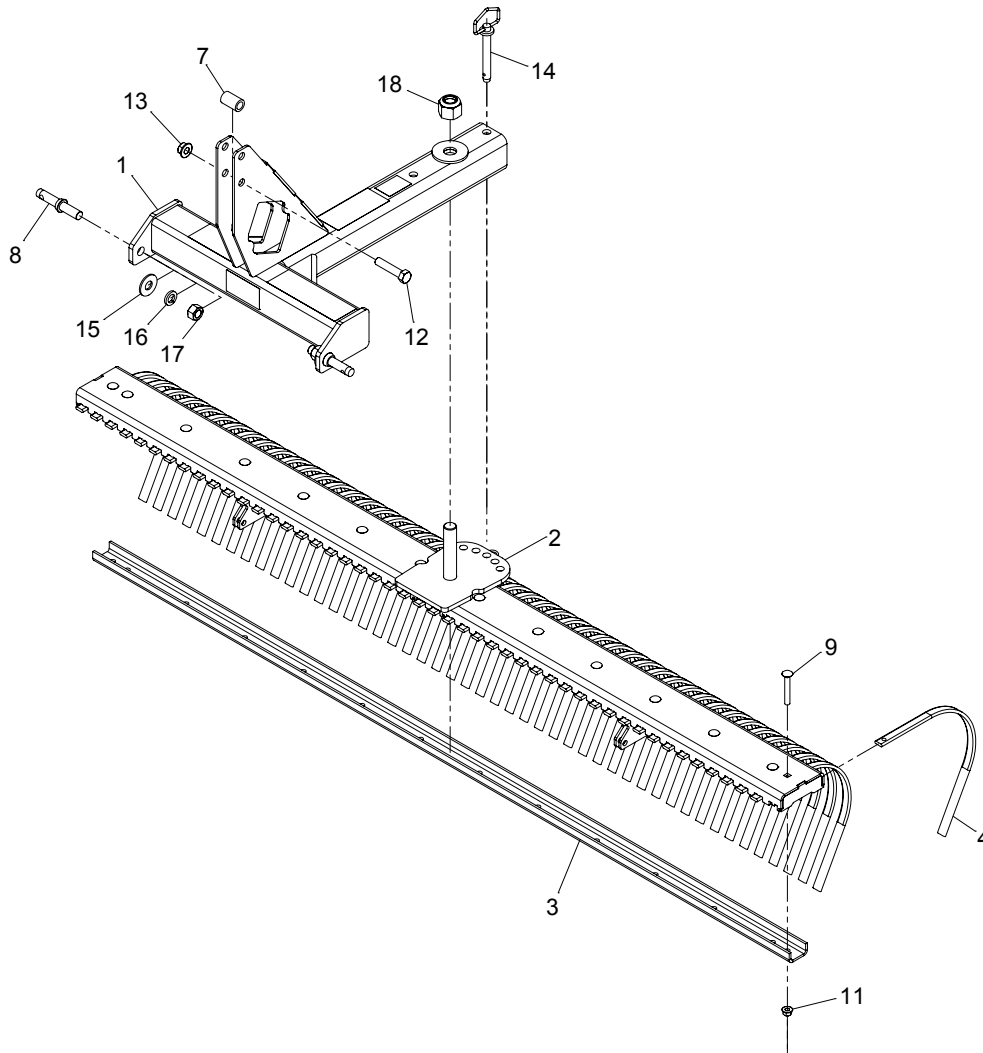
REF	PART	QTY	DESCRIPTION	REF	PART	QTY	DESCRIPTION
1	1043076	1	Hitch frame	12	15007 *	1	3/4 NC x 3-1/2 HHCS, GR5
2	103753172RP	1	LRS72P Tine beam -or-	13	302207 *	1	3/4 NC Flange hex lock nut
2	103753184RP	1	LRS84P Tine beam -or-	14	1004643	1	3/4 x 5 Hitch pin
2	103753196RP	1	LRS96P Tine beam	15	4258 *	2	7/8 Std flat washer
3	103753772RP	1	LRS72P Clamp channel -or-	16	30008 *	2	7/8 Lock washer
3	103753784RP	1	LRS84P Clamp channel -or-	17	30007 *	2	7/8 NF hex nut
3	103753796RP	1	LRS96P Clamp channel	18	1037524	1	1-1/4 NC Nylock hex nut, GR8
4	10562	A/R	LRS Rake tine	NS	1037542	1	Decal, Model,Woods LRS72P
5	1037504RP	1	Right mast plate	NS	1037543	1	Decal, Model,Woods LRS84P
6	1037503RP	1	Left mast plate	NS	1037544	1	Decal, Model,Woods LRS96P
7	1004661RP	1	Sleeve, .812 x 1.25 x 2.00	NOTE: For safety decals, see pages 7 and 8. Order decals separately.			
8	33661RP	2	Category 1 mounting pin (Includes lockwasher 16 & nut 17)	A/R As Required			
9	27635 *	A/R	1/2 NC x 3-1/2 Carriage bolt, GR5	HHCS Hex Head Cap Screw			
10	1637 *	2	1/2 NC x 3-1/2 HHCS, GR5	* Standard Hardware, obtain locally			
11	11900 *	A/R	1/2 NC Flange hex lock nut				

28 Parts

MAN1047
(07/02/2024)

LRS72, LRS84 & LRS96 (PREMIUM) ASSEMBLY

(WITH WELDED MAST PLATES 2023 OR NEWER)

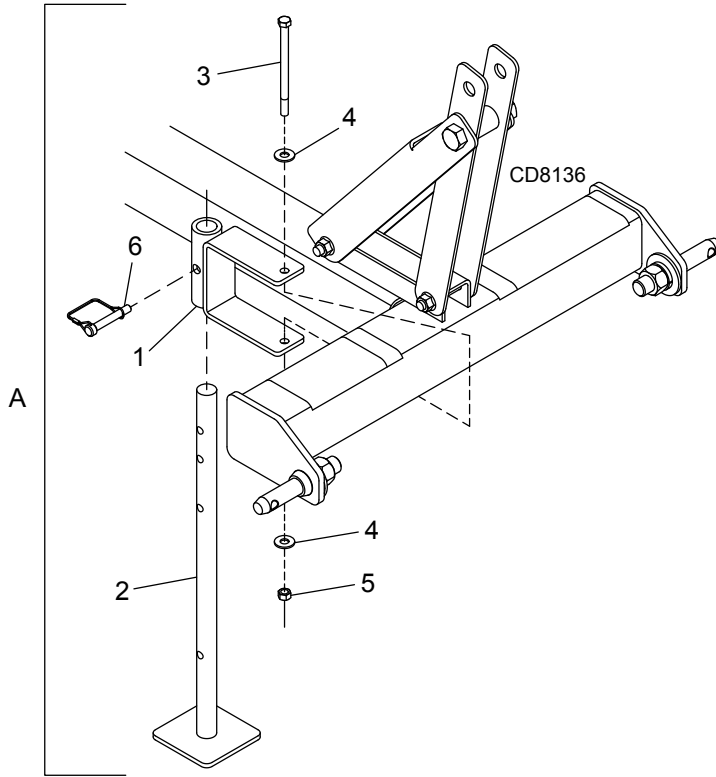


REF	PART	QTY	DESCRIPTION	REF	PART	QTY	DESCRIPTION
1	639756	1	Hitch frame	13	302207 *	1	3/4 NC Flange hex lock nut
2	103753172RP	1	LRS72P Tine beam -or-	14	1004643	1	3/4 x 5 Hitch pin
2	103753184RP	1	LRS84P Tine beam -or-	15	4258 *	2	7/8 Std flat washer
2	103753196RP	1	LRS96P Tine beam	16	30008 *	2	7/8 Lock washer
3	103753772RP	1	LRS72P Clamp channel -or-	17	30007 *	2	7/8 NF hex nut
3	103753784RP	1	LRS84P Clamp channel -or-	18	1037524	1	1-1/4 NC Nylock hex nut, GR8
3	103753796RP	1	LRS96P Clamp channel	NS	1037542	1	Decal, Model,Woods LRS72P
4	10562	A/R	LRS Rake tine	NS	1037543	1	Decal, Model,Woods LRS84P
7	1004661RP	1	Sleeve, .812 x 1.25 x 2.00	NS	1037544	1	Decal, Model,Woods LRS96P
8	33661RP	2	Category 1 mounting pin (Includes lockwasher 16 & nut 17)	NOTE: For safety decals, see pages 7 and 8. Order decals separately.			
9	27635 *	A/R	1/2 NC x 3-1/2 Carriage bolt, GR5	A/R As Required			
10	1637 *	2	1/2 NC x 3-1/2 HHCS, GR5	HHCS Hex Head Cap Screw			
11	11900 *	A/R	1/2 NC Flange hex lock nut	* Standard Hardware, obtain locally			
12	15007 *	1	3/4 NC x 3-1/2 HHCS, GR5				

MAN1047
(07/02/2024)

Parts 29

RBS & LRS PARKING STAND (OPTIONAL)

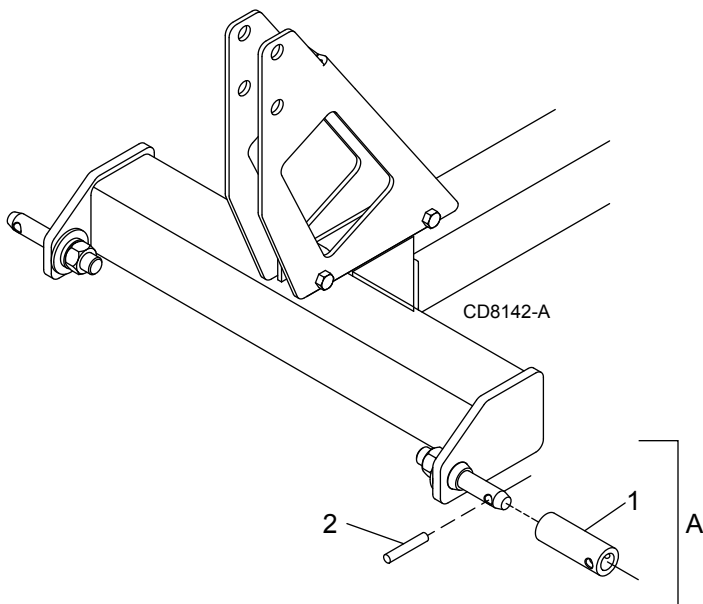


REF	PART	QTY	DESCRIPTION
A	1037480	1	Parking stand kit (For Basic) -or-
A	1037450	1	Parking stand kit (For Premium)
1	1037481	1	Parking stand mounting bracket (For Basic) -or-
1	1037451	1	Parking stand mounting bracket (For Premium)
2	1021062RP	1	Parking stand
3	13927 *	1	3/8 NC x 3-3/4 HHCS, GR5 (Basic)
3	20375 *	1	3/8 NC x 4-1/4 HHCS, GR5 (Premium)
4	565 *	2	3/8 Std flat washer
5	835 *	1	3/8 NC Hex nut
6	33000	1	3/8 x 2-1/4 Lynch pin

HHCS Hex Head Cap Screw

* Standard Hardware, obtain locally

1023725 CATEGORY 1 QUICK HITCH BUSHING KIT (OPTIONAL)

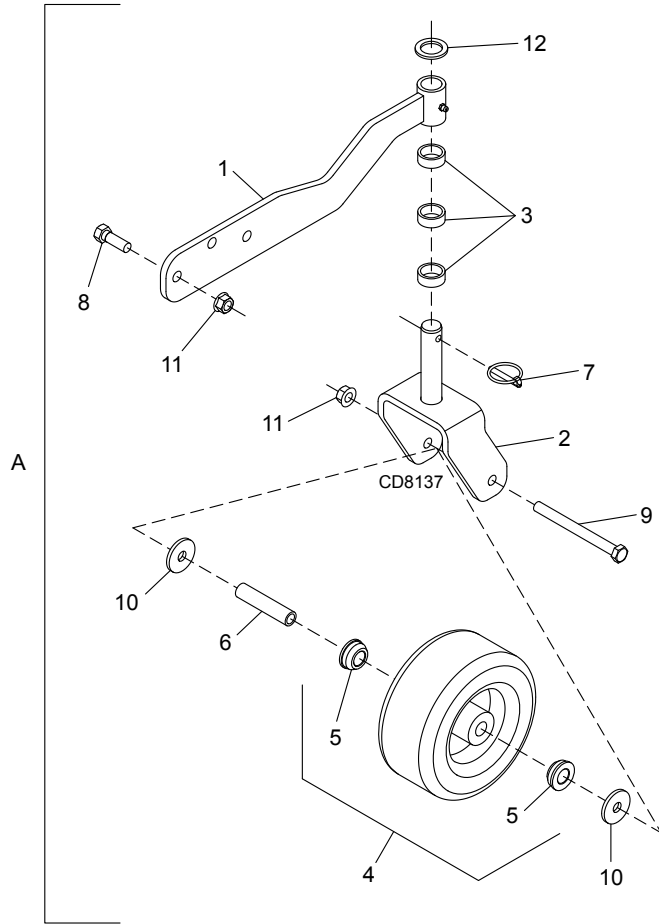


REF	PART	QTY	DESCRIPTION
A	1023725	1	Category 1 quick hitch bushing kit
1	NSS	2	.94 x 1.44 x 4.00 Sleeve
2	NSS	2	7/16 x 1-3/8 Roll pin
	NSS		Not Serviced Separately

30 Parts

MAN1047
(07/02/2024)

LRS TAIL WHEEL (OPTIONAL)

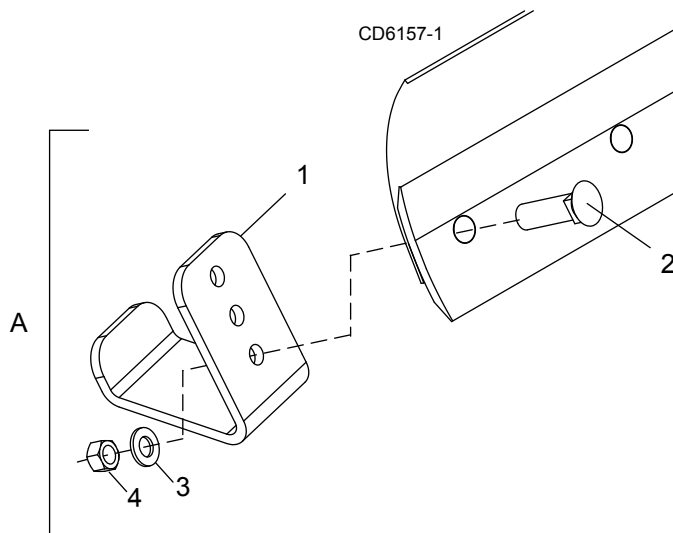


REF	PART	QTY	DESCRIPTION
A	1037437	1	Tail wheel kit, LRS
1	1037434RP	1	Tail wheel arm
2	1037435RP	1	Tail wheel clevis yoke
3	65129	3	Pipe, SCH 40 x .50, Spacer
4	66965	1	Wheel, 7.75 x 3.5 x .75 (Includes bearings item 5)
5	65577	2	Flange bearing, .75 x 1.415
6	29368	1	Sleeve, .50 x .75 x 3.38
7	62043 *	1	1/4 x 1-3/4 Klink pin
8	3379 *	3	1/2 NC x 1-1/2 HHCS, GR5
9	12305 *	1	1/2 NC x 5-1/2 HHCS, GR5
10	63757RP	2	1/2 x 1-3/4 x 7 Ga Flat washer
11	11900 *	4	1/2 NC Flange hex lock nut
12	31303	1	1-1/16 x 1-9/16 x 10 Ga Flat washer

HHCS Hex Head Cap Screw

* Standard Hardware, obtain locally

1004646 BASIC SKID SHOE KIT (OPTIONAL)

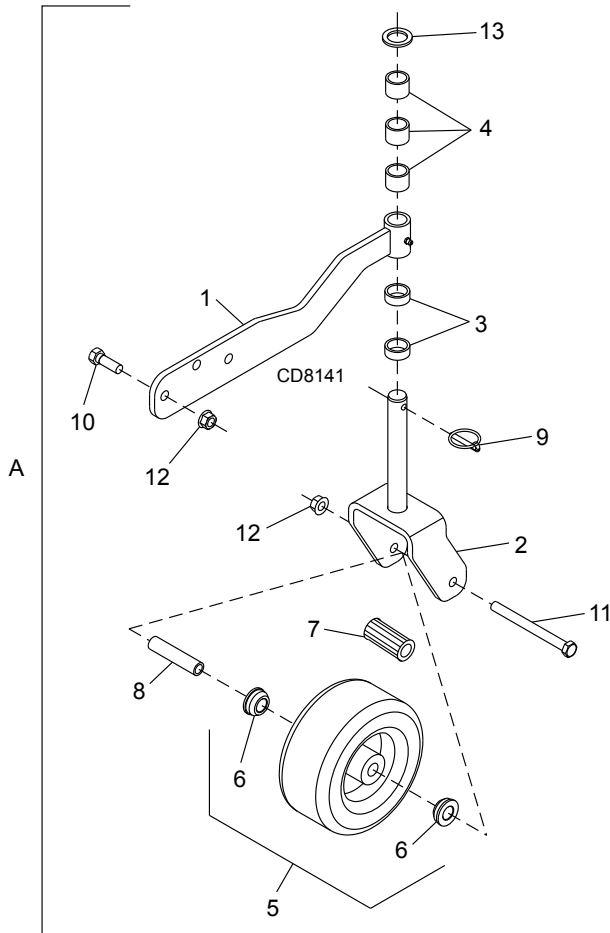


REF	PART	QTY	DESCRIPTION
A	1004646	1	Skid shoe kit (Basic)
1	NSS	1	Skid Shoe
2	25266	1	5/8 NC x 2 Plow bolt
3	57817	1	5/8 Hardened flat washer
4	6239 *	1	5/8 NC Hex lock nut

NSS Not Serviced Separately

* Standard Hardware, obtain locally

LRS TAIL WHEEL (PREMIUM) (OPTIONAL)

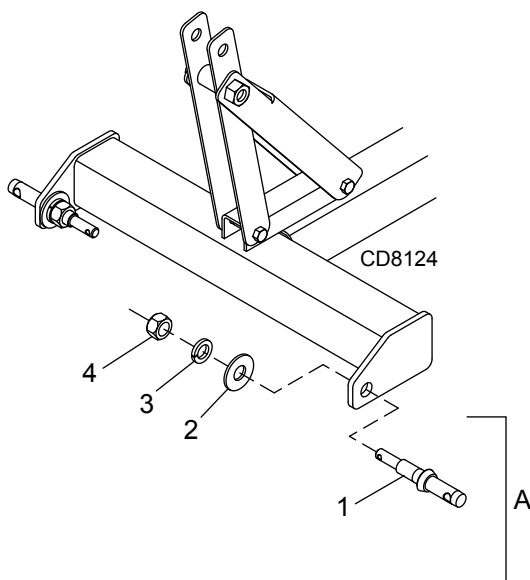


REF	PART	QTY	DESCRIPTION
A	1037589RP	1	Tail wheel kit, (Premium)
1	1037534RP	1	Tail wheel arm
2	1008032RP	1	Tail wheel clevis yoke
3	65129	2	Pipe, SCH 40 x .50, Spacer
4	65130	3	Pipe, SCH 40 x 1.00, Spacer
5	19754	1	Wheel, 10.0 x 3.25 x .75, Pneum (Includes bearings items 6 & 7)
6	65577	2	Flange bearing, .75 x 1.415
7	19756	1	Roller bearing, .75 x 1.38 x 2.5
8	19749	1	Sleeve, .50 x .75 x 4.06
9	62043 *	1	1/4 x 1-3/4 Klik pin
10	3379 *	3	1/2 NC x 1-1/2 HHCS, GR5
11	12305 *	1	1/2 NC x 5-1/2 HHCS, GR5
12	11900 *	4	1/2 NC Flange hex lock nut
13	31303	1	1-1/16 x 1-9/16 x 10 Ga Flat washer

HHCS Hex Head Cap Screw

* Standard Hardware, obtain locally

1009298 CATEGORY 0 / 1 HITCH PIN KIT (OPTIONAL)



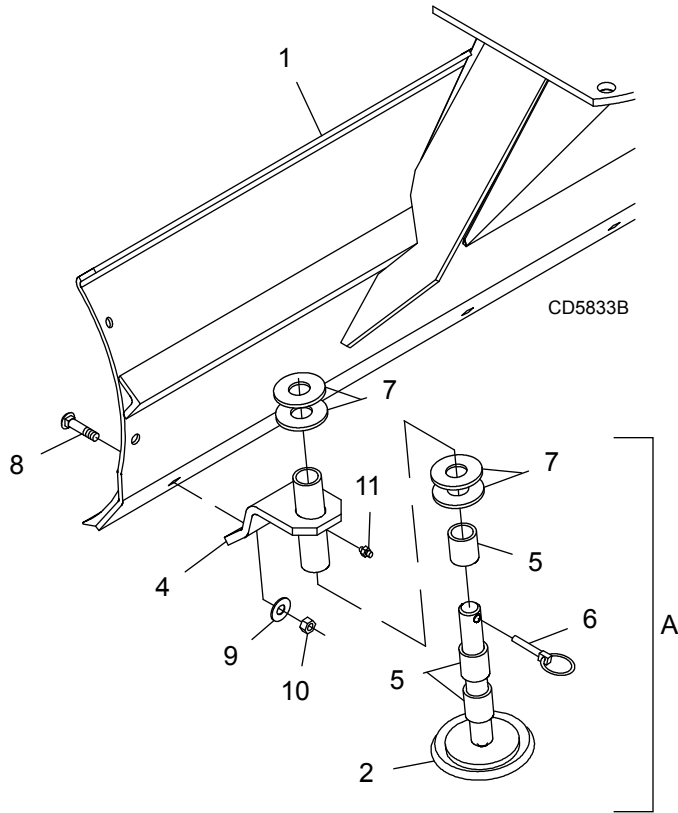
REF	PART	QTY	DESCRIPTION
A	1009298	1	Cat 0/Cat1 Hitch pin kit
1	1004626	2	Hitch pin Cat 0 / 1 (includes 3 and 4)
2	4258 *		7/8 Flat washer (included with blade/rake)
3	30008 *	2	7/8 Lock washer
4	30007 *	2	7/8 NF Hex nut

* Standard Hardware, obtain locally

32 Parts

MAN1047
(07/02/2024)

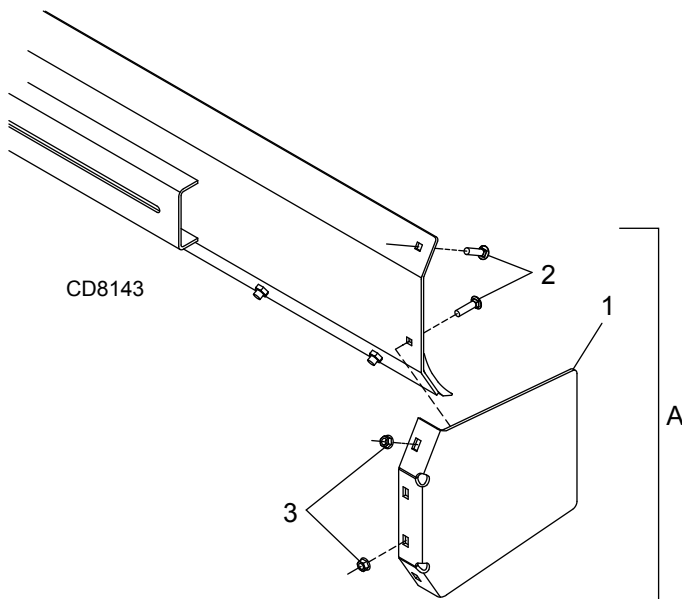
18300 PREMIUM SKID SHOE KIT (OPTIONAL)



REF	PART	QTY	DESCRIPTION
A	18300	1	Skid shoe kit (Premium)
1	----	1	Blade assembly
2	27586RP	2	Skid & shaft assembly
3	1005328RP	1	Bracket, skid shoe right (not shown)
4	1005329RP	1	Bracket, skid shoe left
5	52854	6	Sleeve, 1.28 x 1.66 x .75
6	27542	2	Pin, klik 7/16 x 2
7	7163 *	8	Washer, flat 1-1/4 standard
8	26169	2	Bolt, plow 5/8 NC x 2-1/2 GR5
9	692 *	2	Washer, flat 5/8 standard
10	6239 *	2	5/8 NC Lock nut
11	12296 *	2	Grease fitting, 1/4 -28 tapered thread

* Standard Hardware, obtain locally

1037348 END PLATE KIT (RBS PREMIUM ONLY) (OPTIONAL)



REF	PART	QTY	DESCRIPTION
A	1037348	1	End plate kit, (Premium)
1	NSS	2	End plate
2	301109 *	4	1/2 NC x 1-1/4 Carriage bolt, GR5
3	11900 *	4	1/2 NC Flange hex lock nut

NSS Not Serviced Separately

* Standard Hardware, obtain locally

BOLT TORQUE CHART

Always tighten hardware to these values unless a different torque value or tightening procedure is listed for a specific application.

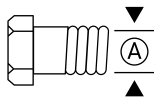
Fasteners must always be replaced with the same grade as specified in the manual parts list.

Always use the proper tool for tightening hardware: SAE for SAE hardware and Metric for metric hardware. Make sure fastener threads are clean and you start thread engagement properly.

All torque values are given to specifications used on hardware defined by SAE J1701 MAR 99 & J1701M JUL 96.

SAE SERIES TORQUE CHART

SAE Bolt Head Identification



SAE Grade 2
(No Dashes)



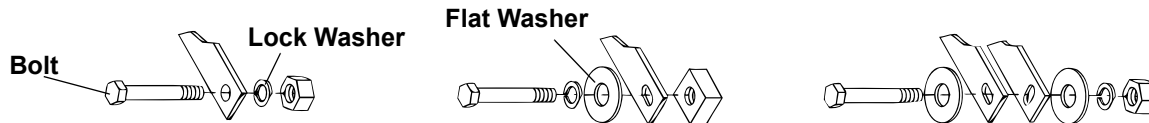
SAE Grade 5
(3 Radial Dashes)



SAE Grade 8
(6 Radial Dashes)

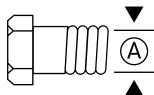
Ⓐ	Wrench Size	Marking on Head					
		SAE 2		SAE 5		SAE 8	
		lbs-ft	N-m	lbs-ft	N-m	lbs-ft	N-m
1/4"	7/16"	6	8	10	13	14	18
5/16"	1/2"	12	17	19	26	27	37
3/8"	9/16"	23	31	35	47	49	67
7/16"	5/8"	36	48	55	75	78	106
1/2"	3/4"	55	75	85	115	120	163
9/16"	13/16"	78	106	121	164	171	232
5/8"	15/16"	110	149	170	230	240	325
3/4"	1-1/8"	192	261	297	403	420	569
7/8"	1-5/16"	306	416	474	642	669	907
1"	1-1/2"	467	634	722	979	1020	1383

TYPICAL WASHER INSTALLATIONS



METRIC SERIES TORQUE CHART

Metric Bolt Head Identification



Metric
Grade 8.8



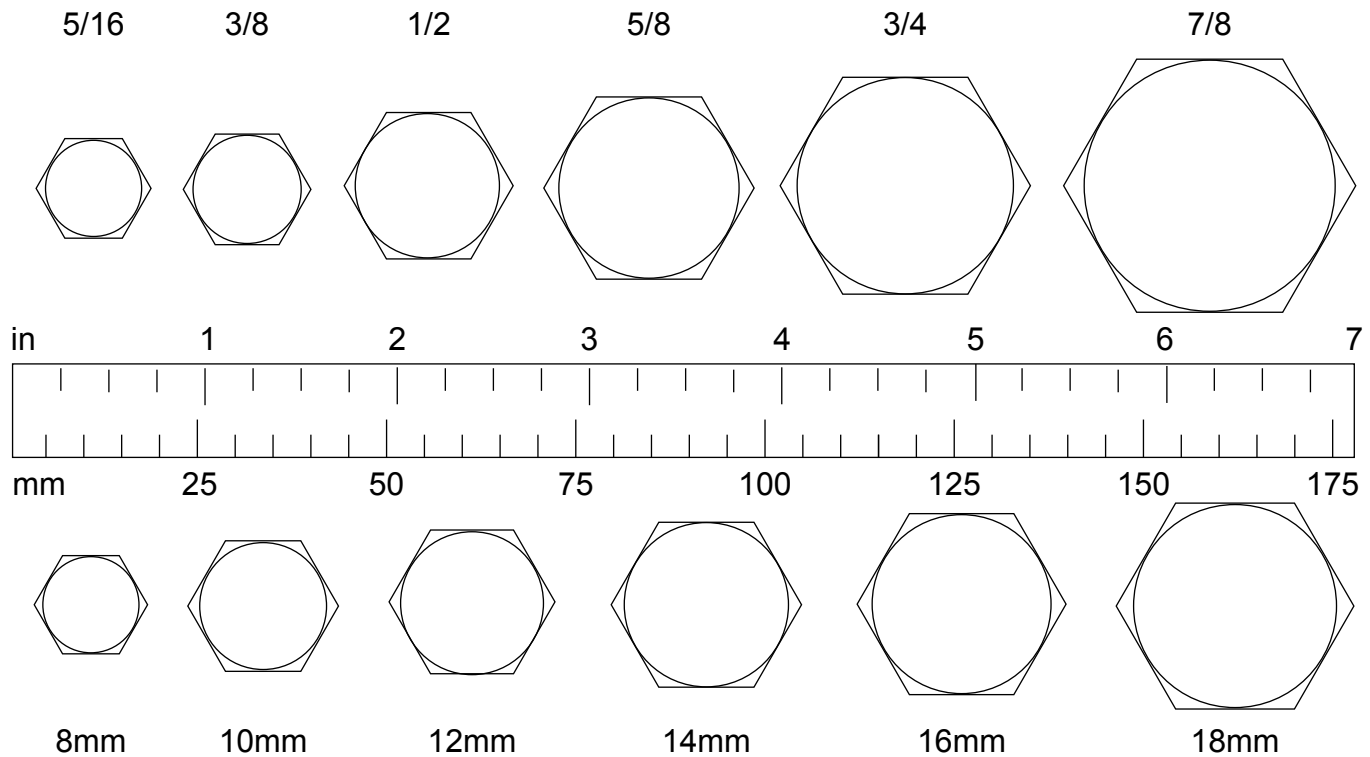
Metric
Grade 10.9

Ⓐ	Wrench Size	Marking on Head								Ⓐ
		Coarse Thread				Fine Thread				
		Metric 8.8		Metric 10.9		Metric 8.8		Metric 10.9		
Diameter & Thread Pitch (Millimeters)		N-m	lbs-ft	N-m	lbs-ft	N-m	lbs-ft	N-m	lbs-ft	Diameter & Thread Pitch (Millimeters)
6 x 1.0	10 mm	8	6	11	8	8	6	11	8	6 x 1.0
8 x 1.25	13 mm	20	15	27	20	21	16	29	22	8 x 1.0
10 x 1.5	16 mm	39	29	54	40	41	30	57	42	10 x 1.25
12 x 1.75	18 mm	68	50	94	70	75	55	103	76	12 x 1.25
14 x 2.0	21 mm	109	80	151	111	118	87	163	120	14 x 1.5
16 x 2.0	24 mm	169	125	234	173	181	133	250	184	16 x 1.5
18 x 2.5	27 mm	234	172	323	239	263	194	363	268	18 x 1.5
20 x 2.5	30 mm	330	244	457	337	367	270	507	374	20 x 1.5
22 x 2.5	34 mm	451	332	623	460	495	365	684	505	22 x 1.5
24 x 3.0	36 mm	571	421	790	583	623	459	861	635	24 x 2.0
30 x 3.0	46 mm	1175	867	1626	1199	1258	928	1740	1283	30 x 2.0

BOLT SIZE CHART

NOTICE: Chart shows bolt thread sizes and corresponding head (wrench) sizes for standard SAE and metric bolts.

SAE BOLT THREAD SIZES



METRIC BOLT THREAD SIZES

ABBREVIATIONS

AG Agriculture	HT Heat-Treated	ORBM O-Ring Boss - Male
ASABE American Society of Agricultural & Biological Engineers (formerly ASAE)	JIC Joint Industry Council 37° Degree Flare	P Pitch
ASAE American Society of Agricultural Engineers	LH Left Hand	PBY Power-Beyond
ATF Automatic Transmission Fluid	LT Left	psi Pounds per Square Inch
BSPP British Standard Pipe Parallel	m Meter	PTO Power Take Off
BSPTM British Standard Pipe Tapered Male	mm Millimeter	QD Quick Disconnect
CV Constant Velocity	M Male	RH Right Hand
CCW Counter-Clockwise	MPa Mega Pascal	ROPS Roll-Over Protective Structure
CW Clockwise	N Newton	RPM Revolutions Per Minute
F Female	NC National Coarse	RT Right
FT Full Thread	NF National Fine	SAE Society of Automotive Engineers
GA Gauge	NPSM National Pipe Straight Mechanical	UNC Unified Coarse
GR (5, etc.) Grade (5, etc.)	NPT National Pipe Tapered	UNF Unified Fine
HHCS Hex Head Cap Screw	NPT SWF National Pipe Tapered Swivel Female	UNS Unified Special

PART NO.
MAN1047

WOODS®

2606 South Illinois Route 2
Post Office Box 1000
Oregon, Illinois 61061 USA

800-319-6637 tel
800-399-6637 fax
woodsequipment.com



© 2024 Woods Equipment Company. All rights reserved. Woods® and the Woods logo are trademarks of Woods Equipment Company. All other trademarks, trade names, or service marks not owned by Woods Equipment Company that appear in this manual are the property of their respective companies or mark holders. Specifications subject to change without notice.