

POST HOLE DIGGER 3-POINT MOUNTED

PD25.21

General purpose for 12-25 hp tractors with
Category 1 hitch

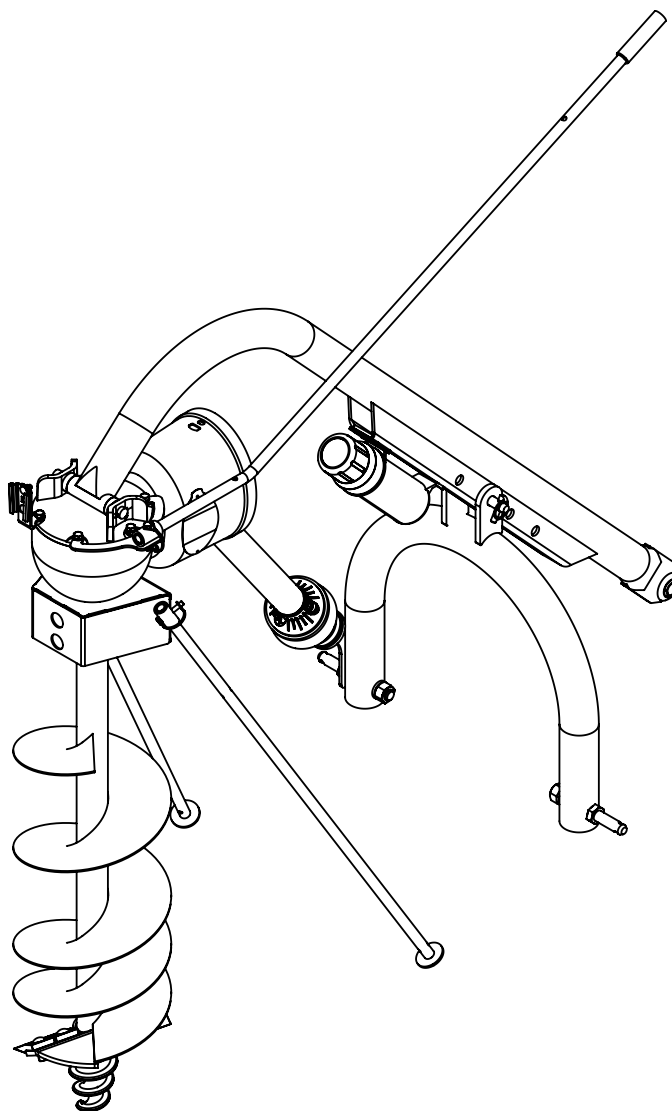
PD35.31

Standard-Duty for 20-35 hp tractors with
Category 1 hitch

PD95.51

Heavy-Duty for 35-95 hp tractors with
Category 1 or Category 2 hitch

Includes parts information for
Models PD25.20, PD35.30 and PD95.50



MAN1300
(Rev 12/16/2024)

WOODS[®]

OPERATOR'S MANUAL

TO THE DEALER:

Assembly and proper installation of this product is the responsibility of the Woods® dealer. Read manual instructions and safety rules. Make sure all items on the Dealer's Pre-Delivery and Delivery Checklists in the Operator's Manual are completed before releasing equipment to the owner.

The dealer must complete the online Product Registration form at the Woods Dealer Website which certifies that all Dealer Checklist items have been completed. Dealers can register all Woods product at dealer.WoodsEquipment.com under Product Registration.

Failure to register the product does not diminish customer's warranty rights.

TO THE OWNER:

Read this manual before operating your Woods equipment. The information presented will prepare you to do a better and safer job. Keep this manual handy for ready reference. Require all operators to read this manual carefully and become acquainted with all adjustment and operating procedures before attempting to operate. Replacement manuals can be obtained from your dealer. To obtain complete warranty details, visit WoodsEquipment.com/warranty. You may also request a hard copy by calling 1-800-319-6637 or mail your request to: Woods Equipment Company, Attn: Warranty Dept. 2606 South Illinois Route 2, Oregon, IL 61061. To locate your nearest dealer, check the Dealer Locator at www.WoodsEquipment.com, or in the United States and Canada call 1-800-319-6637.

The equipment you have purchased has been carefully engineered and manufactured to provide dependable and satisfactory use. Like all mechanical products, it will require cleaning and upkeep. Lubricate the unit as specified. Observe all safety information in this manual and safety decals on the equipment.

For service, your authorized Woods dealer has trained mechanics, genuine Woods service parts, and the necessary tools and equipment to handle all your needs.

Use only genuine Woods service parts. Substitute parts will void the warranty and may not meet standards required for safe and satisfactory operation. Record the model number and serial number of your equipment in the spaces provided:

Model: _____ **Date of Purchase:** _____
Serial Number: (see Safety Decal section for location) _____

Provide this information to your dealer to obtain correct repair parts.

Throughout this manual, the term **NOTICE** is used to indicate that failure to observe can cause damage to equipment. The terms **CAUTION**, **WARNING**, and **DANGER** are used in conjunction with the Safety-Alert Symbol (a triangle with an exclamation mark) to indicate the degree of hazard for items of personal safety.



This is the safety alert symbol. It is used to alert you to potential physical injury hazards. Obey all safety messages that follow this symbol to avoid possible injury or death.



Indicates a hazardous situation that, if not avoided, will result in death or serious injury.



Indicates a hazardous situation that, if not avoided, could result in death or serious injury.



Indicates a hazardous situation that, if not avoided, could result in minor or moderate injury.



Is used to address practices not related to physical injury.

NOTE Indicates helpful information.

TABLE OF CONTENTS

INTRODUCTION	2
GENERAL INFORMATION	3
SPECIFICATIONS	4
ORDERING INFORMATION	4
SAFETY	5
SAFETY RULES	5
TRAINING	5
PREPARATION	5
OPERATION	5
MAINTENANCE	6
TRANSPORTATION	7
STORAGE	7
SAFETY & INSTRUCTIONAL DECALS	8
OPERATION	10
OPERATION	10
PREPARATION	10
PRE-OPERATION CHECKLIST	11
ATTACH DIGGER TO TRACTOR	11
OPERATING TECHNIQUE	12
LODGED AUGER	13
SHEAR BOLT REPLACEMENT	13
TRANSPORT	14
STORAGE	14
REMOVE DIGGER FROM TRACTOR	14
OWNER SERVICE	16
OWNER SERVICE	16
ROUTINE MAINTENANCE	16
LUBRICATION INFORMATION	16
REPLACE CUTTING EDGE	17
CLEAN POST HOLE DIGGER	17
TROUBLESHOOTING	18
ASSEMBLY	20
ASSEMBLY	20
SET-UP INSTRUCTIONS	20
ATTACH A-FRAME AND BOOM TO TRACTOR	20
ATTACH GEARBOX TO BOOM	20
GEARBOX INPUT SHAFT GUARD INSTALLATION	21
MANUAL CANISTER INSTALLATION	21
SMV SIGN SOCKET INSTALLATION	22
INSTALL DRIVELINE	23
ADJUST DRIVELINE LENGTH	23
ATTACH AUGER TO GEARBOX	25
FILL GEARBOX	25
INSTALL HANDLE (ROPS TRACTORS ONLY)	25
SET MAXIMUM LIFT HEIGHT	25
DEALER CHECKLISTS	26
PARTS INDEX	27
APPENDIX	40
BOLT TORQUE CHART	40
BOLT SIZE CHART & ABBREVIATIONS	41
INDEX	42

GENERAL INFORMATION

WARNING

- Some illustrations in this manual show the digger with safety shields removed to provide a better view. The digger should never be operated with any safety shielding removed.

The purpose of this manual is to assist you in operating and maintaining your digger. Read it carefully. It furnishes information and instructions that will help you achieve years of dependable performance. These instructions have been compiled from extensive field experience and engineering data. Some information may be general in nature, due to unknown and varying

operating conditions. However, through experience and these instructions, you should be able to develop procedures suitable to your particular situation.

The illustrations and data used in this manual were current at the time of printing. However, due to possible inline production changes, your machine may vary slightly in detail. We reserve the right to redesign and change the machines as may be necessary without notification.

Throughout this manual, references are made to right and left directions. These are determined by standing behind the tractor facing the direction of forward travel.

SPECIFICATIONS

POST HOLE DIGGER MODEL	PD25.21	PD35.31	PD95.51
3-Point Hitch	CAT 1, Limited CAT 1	CAT 1	CAT 1 or CAT 2
Tractor PTO Horsepower	15 - 25 hp (11-19 kW)	20 - 35 hp (15-26 kW)	35 - 95 hp (26-71 kW)
Tractor PTO Speed	540 RPM	540 RPM	540 RPM
Approximate Weight	177 lbs (80 kg)	178 lbs (81 kg)	245 lbs (111 kg)
Driveline protection	3/8 x 2-1/2 Grade 2 Shear Bolt	3/8 x 3 Grade 2 Shear Bolt	3/8 x 3 Grade 2 Shear Bolt
Auger Length	36 inches (914 mm) (recommended)	48 inches (1219 mm) (recommended)	48 inches (1219 mm) (recommended)
Auger Points (Replaceable)	Cast Ductile Iron, Screw Point	Cast Ductile Iron, Spiral Point	
Cutting Teeth	Alloy Steel, Hardened, Replaceable		
Gearbox	540 RPM, Roller and Ball Bearings, Cast Iron Housing		
Gearbox Lubrication	SAE 80W-90 Weight Gear Lube		
Gearbox Capacity	1.48 quart (1.4L)	1.48 quart (1.4L)	2.75 quart (2.6L)
Operating Temperature Range	-40° to 130° F (-34° to 54° C)		

AUGER ORDERING INFORMATION

PART NO.	Used In	DESCRIPTION
634162	PD25.21	6" x 36" auger with screw point and replaceable cutting edges
634161	PD25.21	9" x 36" auger with screw point and replaceable cutting edges
634160	PD25.21	12" x 36" auger with screw point and replaceable cutting edges
612862	PD35.31, PD95.51	6" x 48" auger with spiral point and replaceable carbide cutting edges
612864	PD35.31, PD95.51	9" x 48" auger with spiral point and replaceable carbide cutting edges
612865	PD35.31, PD95.51	12" x 48" auger with spiral point and replaceable carbide cutting edges
612866	PD95.51	18" x 48" auger with spiral point and replaceable carbide cutting edges
612867	PD95.51	24" x 48" auger with spiral point and replaceable carbide cutting edges



This Operator's Manual should be regarded as part of the machine. Suppliers of both new and second-hand machines must make sure that this manual is provided with the machine.

4 Introduction

MAN1300
(12/16/2024)

SAFETY RULES



ATTENTION! BECOME ALERT! YOUR SAFETY IS INVOLVED!



Safety is a primary concern in the design and manufacture of our products. Unfortunately, our efforts to provide safe equipment can be wiped out by an operator's single careless act.

In addition to the design and configuration of equipment, hazard control and accident prevention are dependent upon the awareness, concern, judgement, and proper training of personnel involved in the operation, transport, maintenance and storage of equipment.

It has been said "The best safety device is an informed, careful operator." We ask you to be that kind of operator.



¡LEA EL INSTRUCTIVO!

Si no lee Ingles, pida ayuda a
alguien que si lo lee para que le
traduzca las medidas de seguridad.

TRAINING

- Safety instructions are important! Read all attachment and power unit manuals; follow all safety rules and safety decal information. (Replacement manuals and safety decals are available from your dealer. To locate your nearest dealer, check the Dealer Locator at www.WoodsEquipment.com, or in the United States and Canada call 1-800-319-6637.) Failure to follow instructions or safety rules can result in serious injury or death.
- If you do not understand any part of this manual and need assistance, see your dealer.
- Know your controls and how to stop engine and attachment quickly in an emergency.
- Operators must be responsible, trained, familiar with the instructions and be physically capable of the safe operation of the equipment, its attachments, and all controls. Do not allow anyone to operate this equipment without proper instructions.
- Never allow children or untrained persons to operate equipment.

PREPARATION

- Check that all hardware is properly installed. Always tighten to torque chart specifications unless instructed otherwise in this manual.
- Always wear relatively tight and belted clothing to avoid entanglement in moving parts. Wear

sturdy, rough-soled work shoes and protective equipment for eyes, hair, hands, hearing, and head; and respirator or filter mask where appropriate.

- Make sure attachment is properly secured, adjusted, and in good operating condition.
- Make sure spring-activated locking pin or collar slides freely and is seated firmly in tractor PTO spline groove.
- Connect PTO driveline directly to power unit PTO shaft. Never use adapter sleeves or adapter shafts. Adapters can cause driveline failures due to incorrect spline or incorrect operating length and can result in personal injury or death.
- Before starting power unit, check all equipment driveline guards for damage. Replace any damaged guards. Make sure all guards rotate freely on all drivelines. If guards do not rotate freely on drivelines, repair and replace bearings before putting equipment into service.
- Power unit must be equipped with ROPS or ROPS cab and seat belt. Keep seat belt securely fastened. Falling off power unit can result in death from being run over or crushed. Keep foldable ROPS systems in "locked up" position at all times.
- Make sure all safety decals are installed. Replace if damaged. (See Safety Decals section for location.)
- Make sure shields and guards are properly installed and in good condition. Replace if damaged.
- Keep unit from swinging side-to-side by using stabilizer bars, adjustable sway chains, or sway blocks on tractor lift arms. Adjust tightly for best results.

OPERATION

- Do not allow bystanders or animals in the area when operating, attaching, removing, assembling, or servicing equipment.
- Consult local utilities before digging. Know location and depth of all underground cables, pipelines, and other hazards in working area and avoid contact.
- Do not put digger into service unless auger point and all cutting edges are intact and in good repair.
- Do not put digger into service unless all shields and guards are in place and in good condition. Replace if damaged.

SAFETY RULES



ATTENTION! BECOME ALERT! YOUR SAFETY IS INVOLVED!



- Keep bystanders and animals away from equipment.
- Do not operate or transport equipment while under the influence of alcohol or drugs.
- Operate only in daylight or good artificial light.
- Never aim auger point with hands on auger, gearbox, boom or driveline. To place auger point use 3-point arms and handle.
- Keep hands, feet, hair, and clothing away from equipment while engine is running. Stay clear of all moving parts.
- Always comply with all state and local lighting and marking requirements.
- Never allow riders or animals on power unit or implement. Never allow anyone to climb on power unit or implement.
- Power unit must be equipped with Roll Over Protection System (ROPS) or ROPS cab and seat belt. Keep seat belt securely fastened. Falling off power unit can result in death from being run over or crushed. Keep foldable ROPS system in "locked up" position at all times.
- Always sit in power unit seat when operating controls or starting engine. Securely fasten seat belt, place transmission in neutral, engage brake, and ensure all other controls are disengaged before starting power unit engine.
- When digging holes, always sit in operator seat.
- To reduce rapid U-joint wear and driveline failure, never lift auger over 12" (305 mm) from ground when PTO is running.
- Make sure locking collar slides freely and is seated firmly in tractor PTO spline grooves.
- PTO driveshaft, PTO driveshaft guard or the PIC guard are not to be used as a step.
- Do not operate PTO during transport.
- Shift tractor transmission into park or neutral and set brakes before engaging PTO and digging.
- Keep digger under control by running PTO at slowest speed possible (no faster than half-throttle in 540 RPM range).
- Look down and to the rear and make sure area is clear before traveling in reverse.
- Use extreme care when working close to fences, ditches, other obstructions, or on hillsides.
- Do not operate or transport on steep slopes. Refer to tractor manual for proper ballasting and slope recommendations.
- When digging in rough ground or hilly terrain, place digger uphill from tractor. If digger is downhill, tractor could tip when pulling auger from hole.
- Do not stop, start, or change directions suddenly on slopes. Make turns slowly and gradually.
- Use extreme care and reduce ground speed on slopes and rough terrain.
- When dislodging a stuck auger, disengage PTO, stop engine, set parking brake, remove key, disconnect PTO from tractor, and turn auger backwards with a wrench. Remove and store wrench before starting engine.
- Before performing any service or maintenance, lower digger to ground or block securely, turn off tractor engine, remove key, and disconnect driveline from tractor PTO.
- Never leave a running machine unattended.
- Before leaving tractor seat, stop PTO, set brake, shut off engine, remove key, and let auger come to a full stop.

MAINTENANCE

- Before performing any service or maintenance, lower digger to ground or block securely, turn off tractor engine, remove key, and disconnect driveline from tractor PTO.
- Never go underneath equipment (lowered to the ground or raised) unless it is properly blocked and secured. Never place any part of the body underneath equipment or between moveable parts even when the engine has been turned off. Hydraulic system leak down, hydraulic system failures, mechanical failures, or movement of control levers can cause equipment to drop or rotate unexpectedly and cause severe injury or death.
- Service and maintenance work not covered in OWNER SERVICE must be done by a qualified dealership. Special skills, tools, and safety procedures may be required. Failure to follow these instructions can result in serious injury or death.
- Use a suitable lifting device of sufficient capacity. Use adequate personnel to handle heavy components.
- Do not modify or alter or permit anyone else to modify or alter the equipment or any of its components in any way.

SAFETY RULES



ATTENTION! BECOME ALERT! YOUR SAFETY IS INVOLVED!



- Never replace driveline shear bolt or auger retaining bolt with a different length, or grade. Always use a SAE grade 2 driveline shear bolt and SAE Grade 5 auger retaining bolts as replacements.
- Always wear relatively tight and belted clothing to avoid getting caught in moving parts. Wear sturdy, rough-soled work shoes and protective equipment for eyes, hair, hands, hearing, and head; and respirator or filter mask where appropriate.
- Do not allow bystanders or animals within 25 feet (7.6m) of the area when operating, attaching, removing, assembling, maintaining, or servicing equipment.
- Make sure attachment is properly secured, adjusted, and in good operating condition.
- Never perform cleaning, service or maintenance with engine running.
- Keep all persons and animals away from operator control area while performing adjustments, service, or maintenance.
- Tighten all bolts, nuts, and screws to torque chart specifications. Check that all cotter pins are installed securely to ensure equipment is in a safe condition before putting unit into service.
- Make sure all safety decals are installed. Replace if damaged. (See Safety Decals section for location.)
- Make sure shields and guards are properly installed and in good condition. Replace if damaged.
- When lubricating telescoping PTO drives, keep fingers out of shield access slots to prevent injury.
- Power unit must be equipped with Roll Over Protection System (ROPS) or ROPS cab and seat belt. Keep seat belt securely fastened. Falling off power unit can result in death from being run over or crushed. Keep foldable ROPS system in “locked up” position at all times.
- Do not operate PTO during transport.
- Do not operate auxiliary hydraulics during transport.
- Look down and to the rear and make sure area is clear before traveling in reverse.
- Do not stop, start, or change directions suddenly on slopes. Make turns slowly and gradually.
- Use extreme care and reduce ground speed on slopes and rough terrain.
- Use additional caution and reduce speed when under adverse surface conditions, turning, or on inclines.
- Do not operate or transport on steep slopes. Refer to tractor manual for proper ballasting and slope recommendations.
- Do not operate or transport equipment while under the influence of alcohol or drugs.
- Due to the mass of the (mounted) machine itself and loaded materials, the tractor machine combination can influence maneuverability and stability. A minimum 20% of tractor and equipment weight must be on the tractor front wheels when attachments are in transport position. Without this weight, front tractor wheels could raise up resulting in loss of steering. Without this weight, tractor could tip over, causing personal injury or death. The weight may be attained with front wheel weights, ballast in tires, front tractor weights or front loader. Weigh the tractor and equipment. **DO NOT ESTIMATE.**
- Raise auger point to a maximum height of 12” (305 mm) for transport.
- Reduce transport speed to avoid bouncing and brief loss of steering control.

TRANSPORTATION

- Always comply with all state and local lighting and marking requirements. Turn on flashing warning lights whenever traveling on a public roadway.
- If digger in transport position blocks the view of tractors SMV sign, attach sign to digger gearbox before transporting on roadway.
- Never allow riders or animals on power unit or attachment.

STORAGE

- Block equipment securely for storage.
- Keep children, bystanders, and animals away from storage area.
- Do not climb or lean on equipment stored on stand.

SAFETY & INSTRUCTIONAL DECALS



ATTENTION! BECOME ALERT! YOUR SAFETY IS INVOLVED!



Replace Immediately If Damaged!

BE CAREFUL!

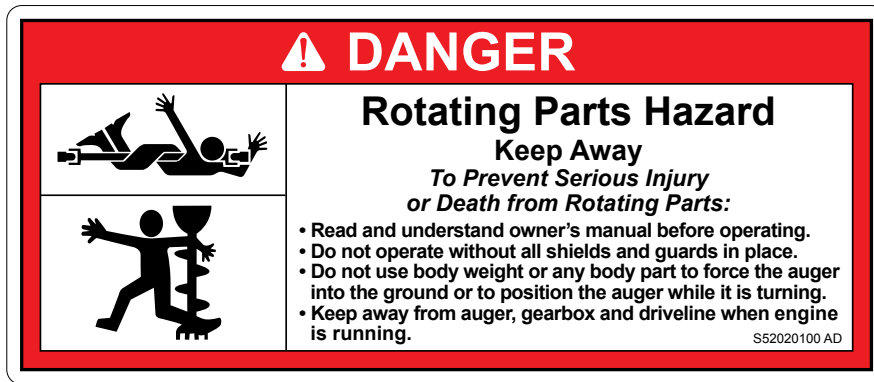
Keep safety decals clean and visible.

Use a clean, damp cloth to clean safety decals.

Avoid spraying too close to decals when using a pressure washer; high-pressure water can enter through very small scratches or under edges of decals causing them to peel or come off.

Replace safety decals if damaged or missing. Replacement safety decals can be ordered free from your dealer. To locate your nearest dealer, check the Dealer Locator at www.WoodsEquipment.com, or in the United States and Canada call 1-800-319-6637. See diagram above for safety decal locations.

1 - PN S52020100



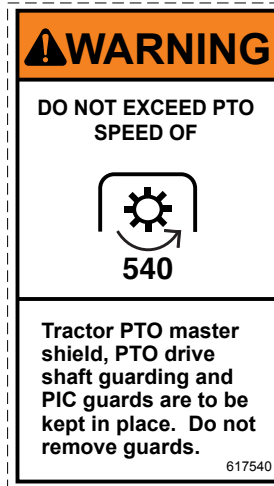
11- PN 18864



12 - PN S52020200



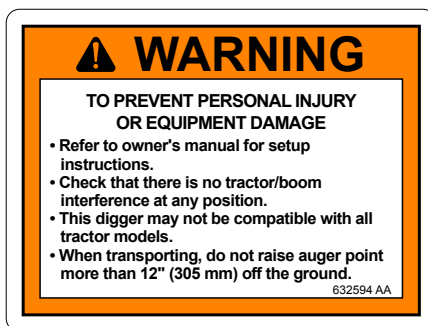
6 - PN 617540



10 - PN 33347



8 - PN 632594



3 - PN 617538



SAFETY & INSTRUCTIONAL DECALS



ATTENTION! BECOME ALERT! YOUR SAFETY IS INVOLVED!

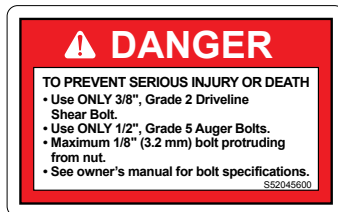


Replace Immediately If Damaged!

4 - PN S52020300



9 - PN S52045600



14 - PN 18869



7 - PN S52066500

**CONSULT LOCAL UTILITIES
BEFORE DIGGING**



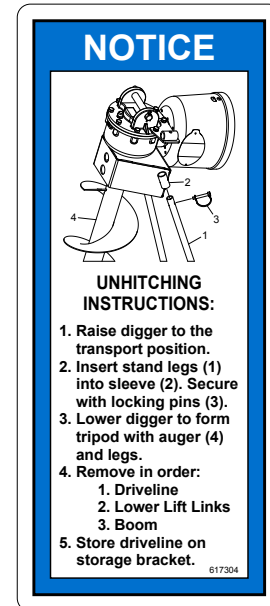
2 - PN 618529



5 - SERIAL NUMBER PLATE

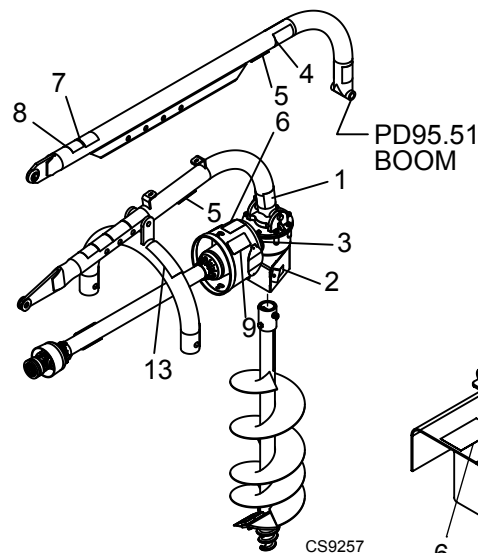
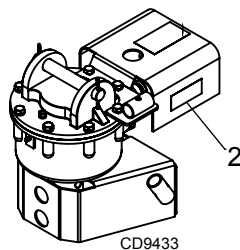
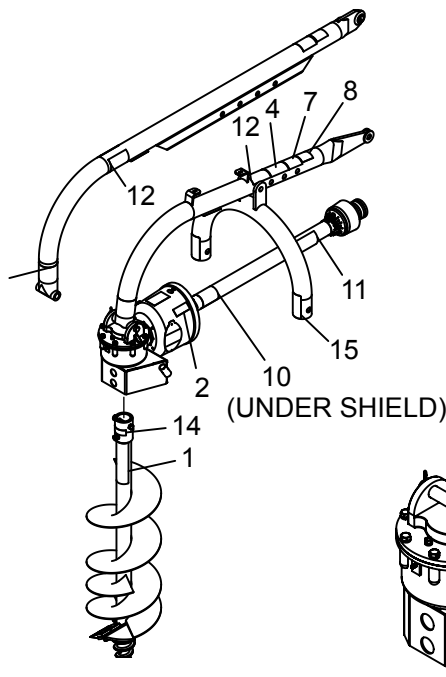


13 - PN 617304

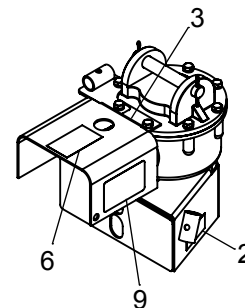


15 - PN 20106

RED REAR REFLECTOR 4.5"



CS9257



MAN1300
(12/16/2024)

Safety 9

OPERATION

The post hole digger is intended to dig holes in soil free from rocks, tree roots, and other obstructions. It is designed to be mounted on an agricultural tractor 3-point hitch and powered by an agricultural tractor 540 RPM 6 spline PTO.

The post hole digger and its individual components are NOT to be used for anything other than their intended use. The operator is responsible for the safe operation of the equipment. The operator must be properly trained. Operators should be familiar with the equipment, the tractor, and all safety practices before starting operation. Read the Safety Rules and Safety Decals on page 5 to page 9, and complete the Pre-Operation Checklist on page 11.

Post hole diggers are designed for one-man operation. You must always dig holes while sitting in the tractor seat. **It is the responsibility of the operator to see that no one else or an animal is within twenty-five feet (25') (7.6 m) of the digger when it is operating.** Accidents have occurred when more than one person is in the immediate area of the operating equipment. Be sure no one else is near you when you operate this product.

DANGER

- Do not put digger into service unless all shields and guards are in place and in good condition. Replace if damaged.

WARNING

- Keep hands, feet, hair, and clothing away from equipment while engine is running. Stay clear of all moving parts.
- Do not put digger into service unless auger point and all cutting edges are intact and in good repair.
- Keep bystanders and animals 25 feet (7.6 m) away from equipment working area.
- Make sure locking collar slides freely and is seated firmly in tractor PTO spline grooves.

CAUTION

- Always wear relatively tight and belted clothing to avoid getting caught in moving parts. Wear sturdy, rough-soled work shoes and protective equipment for eyes, hair, hands, hearing, and head; and respirator or filter mask where appropriate.
- Tighten all bolts, nuts, and screws to torque chart specifications. Check that all cotter pins are installed securely to ensure equipment is in a safe condition before putting unit into service.

PREPARATION

WARNING

- Consult local utilities before working. Know location of all underground cables, pipelines, overhead wires, and other hazards in working area and avoid contact.

Thoroughly read and understand your Operator's Manuals.

Before beginning operation, clear area of objects that wrap around the auger or might be thrown.

Contact local utility company to make certain there are no buried gas lines, electrical cables, etc., in the work area.

Check for ditches, stumps, holes, or other obstacles that could cause the tractor to roll.

To dig properly, your digger must be able to raise or lower through the highest and lowest points of your lift arm travel without binding against the tractor frame. Check carefully BEFORE attaching the auger. If it does bind, adjust the tractor 3-pt. linkage so that all movement is free.

IMPORTANT: The maximum lift height of auger point above the ground is 12" (305 mm). Lifting higher can cause damage to digger or tractor. (See Assembly Instructions on page 20).

Use stabilizer bars, adjustable sway chains, or sway blocks on your tractor lift arms to keep the post hole digger from swaying side to side. Adjust as tightly as practical for best performance. Remove or place tractor drawbar in storage position.

IMPORTANT

- Post hole digger gearboxes are shipped without lubrication. Gearboxes must be serviced with SAE 80W-90 gear lube before operation.
- If PTO driveline interferes with swinging drawbar, swing drawbar out of the way or remove.

PRE-OPERATION CHECKLIST

- _____ Review and follow all safety rules and safety decal instructions on page 5 through page 9.
- _____ Check that all safety decals are installed and in good condition. Replace if damaged.
- _____ Check that all shields and guards are properly installed and in good condition. Replace if damaged.
- _____ Consult local utilities before digging. Know location of and avoid contacting all underground cables, pipelines, overhead wires and other hazards in digging area.
- _____ Check that auger point and all cutting edges are intact and in good repair.
- _____ Check that equipment is properly and securely attached to tractor.
- _____ Make sure driveline spring-activated locking pin slides freely and is seated firmly in tractor PTO spline groove or gearbox PTO spline groove.
- _____ Check all lubrication points and grease as instructed in "Service, lubrication information."
- _____ Lubricate all grease fitting locations. Make sure telescoping PTO shafts and universal joints are lubricated.
- _____ Make sure tractor 3-point lift links do not interfere with hydraulic hoses or driveline throughout full turning range.
- _____ Check that all hardware and cotter pins are properly installed and secured.
- _____ Check attitude adjustment of auger.
- _____ Check and keep all bystanders and animals 25 ft (7.6 m) away from equipment working area.
- _____ Before starting engine, operator must be in tractor seat with seat belt fastened. Place transmission in neutral or park, engage brake and disengage tractor PTO.

ATTACH DIGGER TO TRACTOR

WARNING

- **Make sure spring-activated locking pin or collar slides freely and is seated firmly in tractor PTO spline groove.**

CAUTION

- **Make sure driveline will not bottom out at the shortest length and that it has at least 6" (150 mm) overlap at the longest length.**
 - **If driveline is too short, please contact your dealer for a longer driveline.**
 - **If driveline is too long, follow the instructions for shortening the driveline.**
 - **If digger in transport position blocks the view of tractors SMV sign, attach sign to digger gearbox before transporting on roadway.**
1. Remove tractor top link and place in storage. Pin attaching top link to tractor bracket will be used for the digger.
 2. Align tractor lower lift links to digger A-frame hitch pins.
 3. Position tractor so there is sufficient space to lift digger boom up to tractor top link bracket. Shut off tractor. Set parking brake.
 4. Remove driveline from storage position and lay on ground. Take care not to get dirt or debris in yoke or locking collar.
 5. Lift end of boom up and attach to tractor top link bracket. Secure with pin previously removed.
 6. Connect lower lift links to digger A-frame hitch pins. Note: If using the PD95.51 on a tractor with Category 2 hitch, use sleeves on pins.
 7. Connect driveline to tractor PTO shaft. Be sure driveline QD is seated firmly in tractor PTO spline groove.
 8. Start tractor and lift 3-point hitch. Remove parking stands and place in storage.

OPERATING TECHNIQUE

- Keep bystanders and animals 25 feet (7.6 m) away from equipment working area.
- Do not use body weight or any body part to force the auger into the ground or to position auger when auger is turning.
- Never aim auger point with hands on auger, gearbox, boom or driveline. To place auger point use 3-point arms and handle.
- Do not shovel dirt away from a running auger. The shovel could be caught and thrown by auger.

CAUTION

- Always sit in the operator's seat when digging holes.
1. Position the tractor so that the auger point is placed where the hole is to be dug. The point of the auger should be approximately 3" (76 mm) back of center of gearbox. As the auger works into the ground, this slight angle will straighten due to the pivoting action of the boom moving downward. If the auger has side tilt, turn off tractor and correct by adjusting lift arm on tractor hitch.
 2. Set tractor brakes. Shift tractor into park or neutral before engaging PTO and digging. Always sit in the operator seat when digging holes.
 3. Lower auger point slowly to the ground with PTO disengaged. The positioning handle is used to position the auger as the auger is lowered to the ground. The handle should be easily accessible while seated in tractor seat and operating the tractor 3-point lift arms. Adjust as necessary. With the auger point lowered to the ground, set the engine speed to idle, then engage the PTO. Refer to tractor manual for proper operation of the tractor PTO. Set tractor speed to 540 RPM. Refer to tractor manual for procedure to shut off tractor and PTO in case of emergency.
- IMPORTANT: Under no circumstances should the PTO be run in excess of 540 RPM.**
- If the auger tilts too far forward or to the rear, it may be necessary to move the tractor slightly. Be careful not to bend the auger.
4. As the auger penetrates the ground, lower the unit slowly with the 3-point lift arms. Do not let the auger screw itself into the ground. Auger must dig with the dirt broken up and carried to the top by auger flighting.

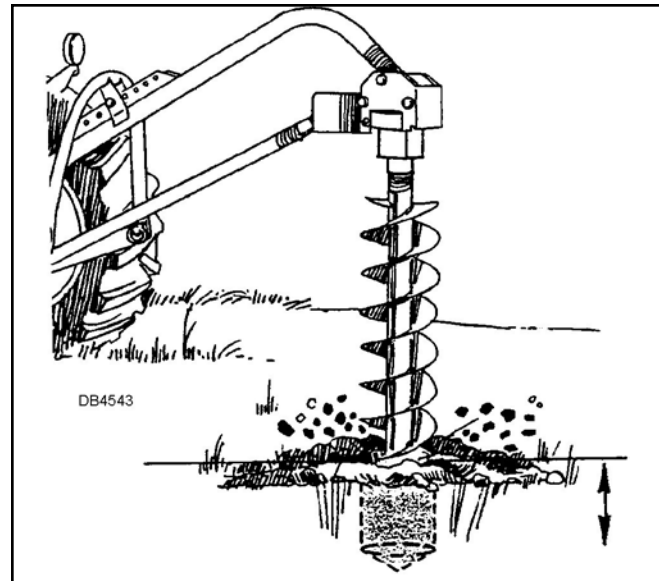


Figure 1. Operation

5. Dig the hole in small steps. Dig down approximately 8" (200 mm), then bring the auger up to let the soil clear. Repeat this procedure until the desired depth is reached. This allows better control of the auger and can prevent difficulties that could lead to an accident.

IMPORTANT

- It is best to raise the auger just enough to clear the hole when the PTO is engaged. Raising higher than 12" (305 mm) with PTO shaft running can cause damage to PTO shaft. Once the hole is dug to the desired depth raise the auger while rotating to bring the dirt out of the hole.

To get a clean hole, it is sometimes best to lower the auger into the hole with the auger turning and then, when at the bottom, stop the rotation and raise the auger while not turning. This brings the dirt up with little left in the hole.

Disengage the PTO when traveling between holes.

In some types of soil it may be necessary to use the 3-point lift arms to prevent the auger from screwing itself into the ground.

When the ground is too tough to penetrate with your cutting edges and point, sharpen or replace them and try again. These are replaceable parts and must be in good condition to penetrate.

If you have difficulty penetrating hard ground, refer to the Troubleshooting section in this manual for suggestions.

LODGED AUGER

WARNING

- When dislodging a stuck auger, disengage PTO, stop engine, set parking brake, remove key, and disconnect PTO from tractor. Remove and store wrench before starting engine.
 - Removing a lodged auger can be dangerous work. Be careful.
 - Do not attempt to raise the auger while turning it with a wrench, or with a wrench attached to the auger. Injury may occur if the PTO is engaged or the 3-point lift arms suddenly raise the auger.
1. If the auger gets stuck in wet clay, stones or roots, disengage the PTO immediately and turn off the engine.
 2. With tractor engine off and key removed, Disconnect the PTO driveline from the tractor.
 3. Turn the auger backwards with a large pipe wrench until auger is free completely back out of the obstruction.
 4. Remove and store wrench and all other tools used during this process.
 5. Repeat steps in operating techniques to continue digging hole.

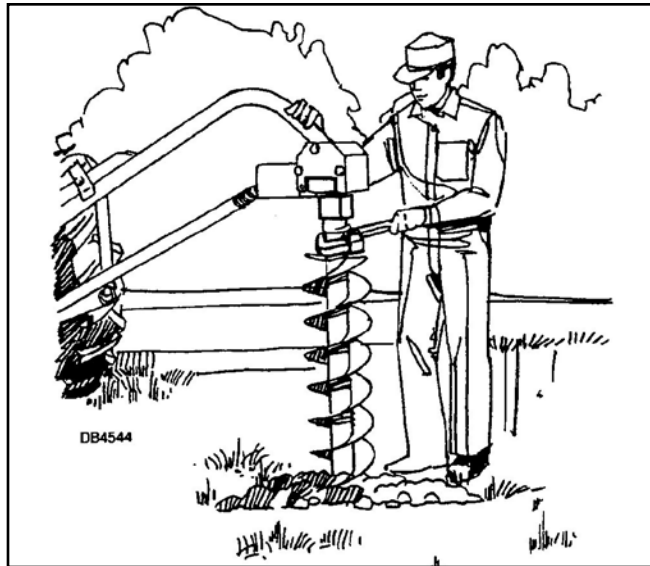


Figure 2. Dislodge Auger

SHEAR BOLT REPLACEMENT

WARNING

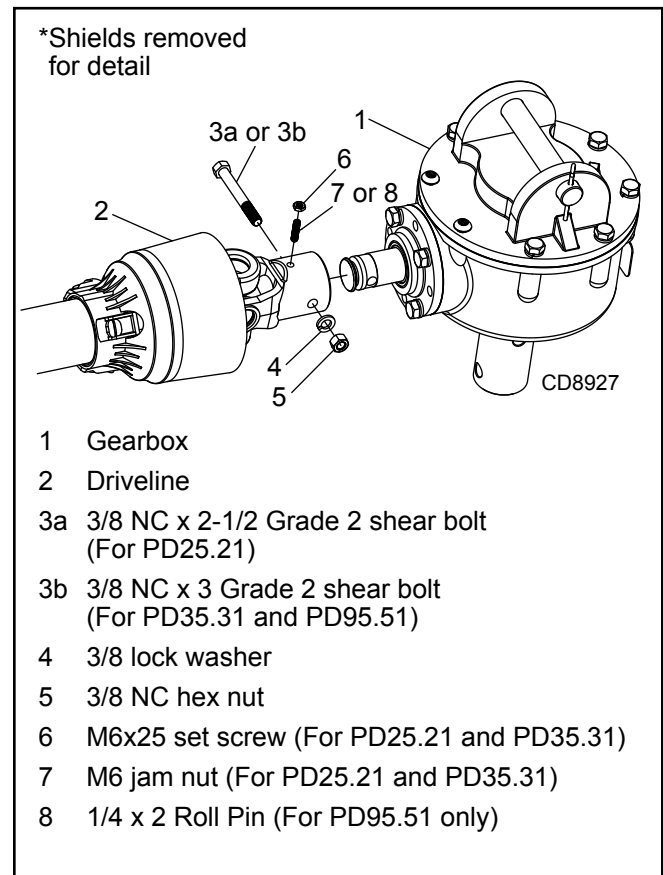
- Never replace shear bolt or auger retaining bolt with a different length, or grade. Always use a SAE grade 2 driveline shear bolt and SAE grade 5 auger retaining bolts.

Shear bolts are important for both safety and preventing damage to the digger. Their intended function is to break when too much force is applied.

Always replace shear bolts at the gearbox input with manufacturer's part or one of the same size, length and SAE Grade 2 specification.

Hardened bolts or bolts that are too long can cause accidents resulting in injury or death.

The set screw or roll pin, Figure 3, prevents the driveline from coming off gearbox shaft if the shear bolt should shear.



- 1 Gearbox
- 2 Driveline
- 3a 3/8 NC x 2-1/2 Grade 2 shear bolt (For PD25.21)
- 3b 3/8 NC x 3 Grade 2 shear bolt (For PD35.31 and PD95.51)
- 4 3/8 lock washer
- 5 3/8 NC hex nut
- 6 M6x25 set screw (For PD25.21 and PD35.31)
- 7 M6 jam nut (For PD25.21 and PD35.31)
- 8 1/4 x 2 Roll Pin (For PD95.51 only)

Figure 3. Shear Bolt Replacement

TRANSPORT

WARNING

- Do not operate PTO during transport.
- Keep bystanders and animals 25 feet (7.6 m) away from equipment during transport.
- Do not transport with parking stands installed or in storage position.
- Always comply with all state and local lighting and marking requirements. Turn on flashing warning lights whenever traveling on a public roadway.
- If digger in transport position blocks the view of tractors SMV sign, attach sign to digger gearbox before transporting on roadway.

The post hole digger auger is free-swinging, and care should be taken while transporting the machine.

Be sure auger is completely retracted from the hole before attempting to move the tractor.

DO NOT transport the post hole digger while the PTO is engaged as this could cause the universal joints of the PTO driveline into a sharp operating angle and cause failure of the driveline.

Pay particular close attention to the Safety Messages regarding transport. Avoid unnecessary injuries and equipment damage by exercising cautious, conscientious travel procedures.

Attaching the implement to the tractor increases the overall length of the working unit. Allow additional clearance for the implement to swing when turning.

Raise the digger auger point to a maximum height of 12" (305 mm) off the ground for transport.

STORAGE

1. Drain and change the oil in your gearbox.
2. Check and replace, where necessary, blades, bolts, nuts on the machine.
3. Clean machine and touch up any rust spots that may have appeared.
4. Replace any safety decals if damaged, illegible, or painted over.
5. Make sure PTO driveline yoke and gearbox input shaft are clean and free of burrs. Keep well lubricated to prevent galling of yoke and input shaft when shear bolt becomes sheared.
6. Keep all shields in place. Order new shields if damaged or missing.

7. Keep cutting edges sharp. Sharp cutting edges dig easier and better. Outer cutting edges on larger augers wear faster than inner cutting edges; switching teeth will even wear.
8. Store digger on a hard, level surface in a clean, dry location.

REMOVE DIGGER FROM TRACTOR

When off the tractor, post hole diggers can be an awkward piece of equipment to handle. Be careful not to pinch hands and fingers in the various hinge points of the digger.

Parking Stand Installation

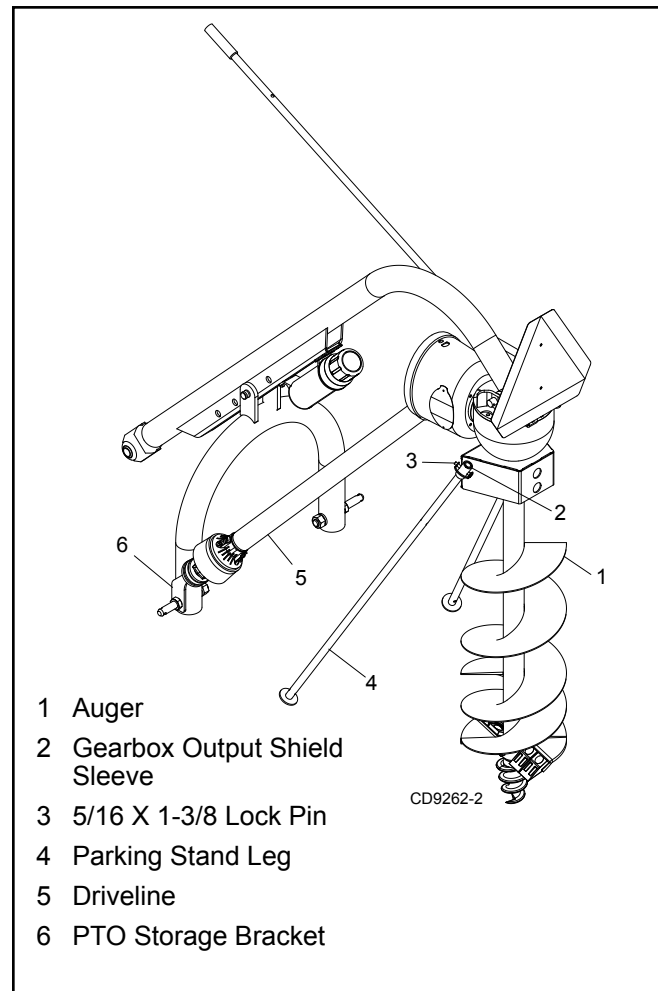


Figure 4. Storage Position PD95.51
(NOTE: Optional SMV sign shown)

1. Raise the implement as high as possible.
2. Insert the two parking stand legs (4) into the lug (2) on the front of the gearbox output shield. Secure with two locking pins (3).

3. Lower digger until the two legs and auger form a tripod. This will support the post hole digger in a vertical position. **NOTE:** (1) Lower digger slowly on to auger point to prevent damage. (2) Tractor may have to be moved forward with auger point on ground to form tripod.
4. Remove parts connected to tractor in following order: (1) Driveline (2) Lower Lift Links (3) Boom.
- 5a. **PD25.21 and PD35.31:** Place the driveline on storage bracket (6) to help prevent dirt and debris from accumulating in locking collar on the driveline PTO yoke.
- 5b. **PD95.51:** Hang the PTO end of the driveline (5) over the PTO shaft shortage bracket (6) to help prevent dirt and debris from accumulating in the locking collar on the driveline PTO yoke.

Alternative Suggestions

If available, the digger can be hung from an overhead rafter or beam. Attach the chain or rope around the boom just ahead of the gearbox. This allows one man to easily reconnect the digger to the tractor when next use is required.

If storing outside, another idea is to dig a hole about 12-18 inches (300-450 mm) deep. Then shut the PTO off while the auger is in the hole. Set parking brake, turn off engine, and disconnect the digger from the tractor. The auger in the hole will keep the unit upright and make it possible for one person to disconnect or reconnect to the tractor. Doing this, will cause rusting of the auger, but it is easy for one person to handle the unit.

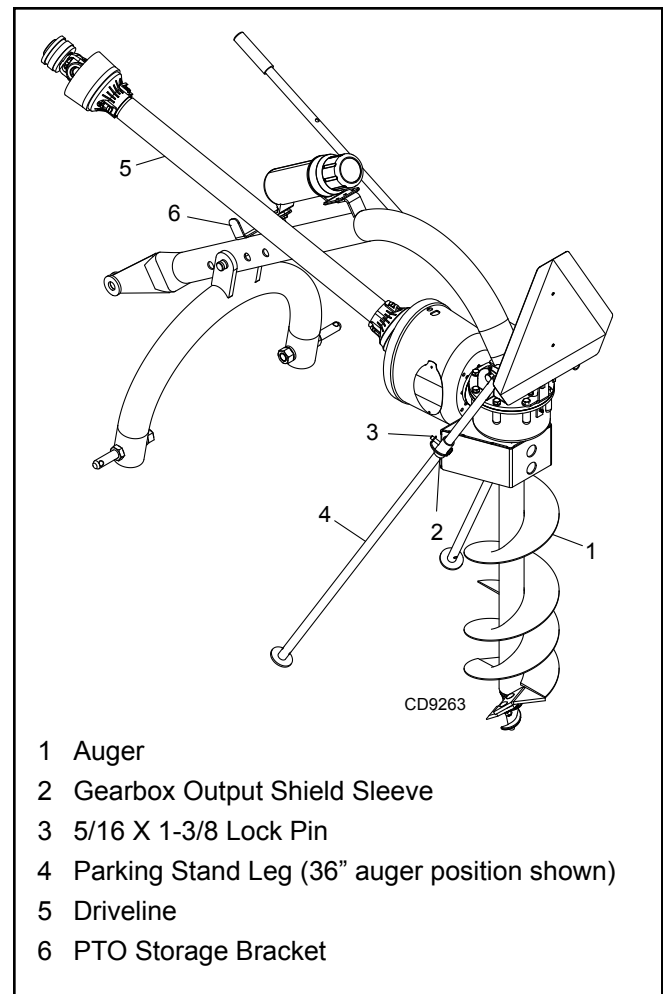


Figure 5. Storage Position Models PD25.21, PD35.31
(NOTE: Optional SMV sign shown)

OWNER SERVICE

The information in this section is written for operators who possess basic mechanical skills. For your protection, read and follow all safety information in this manual.

⚠ WARNING

- Before performing any service or maintenance, lower digger to ground or block securely, turn off tractor engine, remove key, and disconnect driveline from tractor PTO.
- NEVER GO UNDERNEATH EQUIPMENT. Never place any part of the body underneath equipment or between moveable parts even when the engine has been turned off. Hydraulic system leak-down, hydraulic system failures, mechanical failures, or movement of control levers can cause equipment to drop or rotate unexpectedly and cause severe injury or death.
 - Service work does not require going underneath implement.
 - Read Operator's Manual for service instructions or have service performed by a qualified dealer.
- Keep all persons and animals away from operator control area while performing adjustments, service, or maintenance.
- Keep hands, feet, hair, and clothing away from equipment while engine is running. Stay clear of all moving parts.

⚠ CAUTION

- Always wear relatively tight and belted clothing to avoid getting caught in moving parts. Wear sturdy, rough-soled work shoes and protective equipment for eyes, hair, hands, hearing, and head; and respirator or filter mask where appropriate.

ROUTINE MAINTENANCE

1. Check that all bolts, nuts, and screws are tight. Checking the bolts and nuts on the cutting blades is particularly important in rocky soil.
2. Check gearbox oil level before each use. Oil level can be checked by removing top sight plug on back of gearbox. Remove plug. If a small amount of oil is present and begins to run out of hole, replace plug. If oil is not present, remove top fill plug and add SAE 80W-90 oil until oil starts to run out of sight plug hole. Check for gearbox oil leaks before each use. It is essential that the gearbox is kept correctly filled with gearbox oil.

NOTICE: No warranty claim can be submitted on a gearbox that has run dry.

3. Grease the PTO shaft prior to use and each use.
4. Check the wear on the cutting edges. Sharpen them routinely with an angle grinder or replace when worn down too far. Keep at least two sets of cutting blades, bolts, and nuts as spares.

LUBRICATION INFORMATION

⚠ WARNING

- Failure to maintain proper lubrication can result in damage to U-joints, gearbox, tractor PTO and/or driveline which can cause serious injury or death.

⚠ CAUTION

- When lubricating telescoping PTO drives, keep fingers out of shield access slots to prevent injury.

The accompanying chart gives the frequency of lubrication in operating hours, based on normal conditions. Severe or unusual conditions may require more frequent lubrication.

Do not let excess grease collect on or around parts, particularly when operating in sandy areas.

Use an SAE 80W-90 gear lube in gearbox.

Use a lithium grease of No. 2 consistency with a MOLY (molybdenum disulfide) additive for all locations. Be sure to clean fittings thoroughly before attaching grease gun. When applied according to the lubrication chart, one good pump of most guns is sufficient. Do not over grease.

Lubrication Chart

Ref. No.	Description	Frequency
1	Front U-Joint (Driveline)	8 Hours
2	Rear U-Joint (Driveline)	8 Hours
3	Telescoping member of driveline	8 Hours
4	Rear yoke to gearbox input shaft	Seasonally
5	Gearbox (Fill to proper level)	Check before each use.

Daily lubrication of the telescoping member is necessary. Failure to maintain proper lubrication can result in damage to U-joints, gearbox, tractor PTO and/or driveline which can cause serious injury or death.

REPLACE CUTTING EDGE

Cutting edges and center points are replaceable. They should be sharpened or replaced when worn.

PD25.21

1. Remove carriage bolt (4), lock washer (5), and hex nut (6) holding cutting edge (3) to the auger.
2. Replace or sharpen cutting edge. Cutting edge can be sharpened using a steel file or grinder. Restore the cutting edge to an approximate 25 degree angle on top side of tooth. Edge should remain 1/16" (1.5 mm) thick. Discard old cutting edge and replace when sharpening has ground the cutting edge to an overall length of approximately 2-3/8" (60 mm). NOTE: 9" and 12" augers use an inner and outer cutting edge.
3. Remove center point (2) by using a large pipe wrench. Clean threads before installing new point.

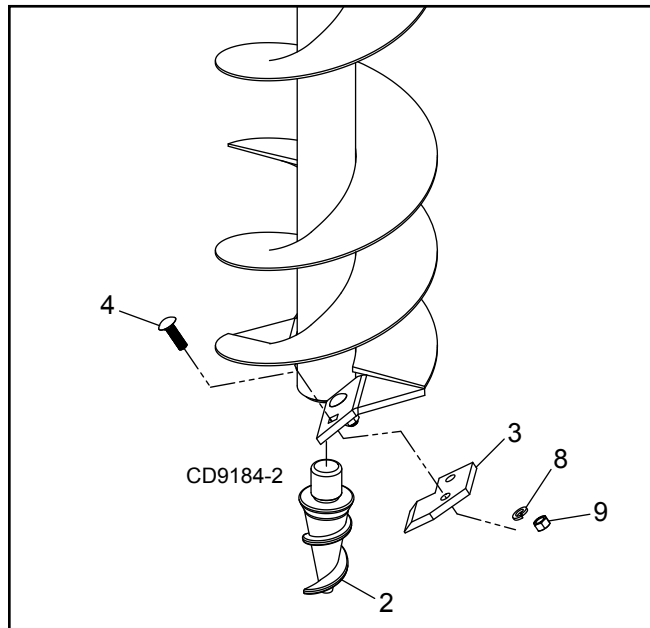


Figure 6. Cutting Edge Replacement

PD35.31 and PD95.51

1. Remove carriage bolt (4), lock washer (5), and hex nut (6) holding cutting edge (2) to the auger.
2. Replace or sharpen cutting edge. Cutting edge can be sharpened using a steel file or grinder. Restore the cutting edge to an approximate 10 degree angle on both top and bottom side of tooth. Discard old cutting edge and replace with new edge when sharpening has ground the cutting edge into the recessed pockets on top of the cutting edge.

3. Remove center point (1) by removing cap screw (3), lock washer (5), and hex nut (6).

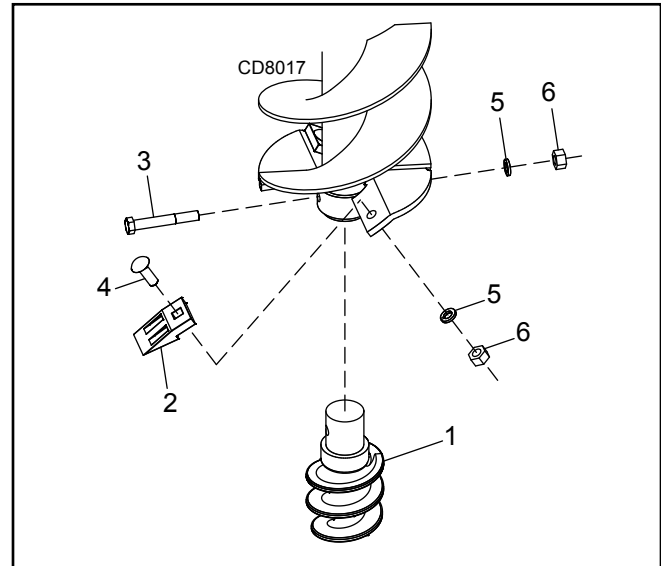


Figure 7. Cutting Edge Replacement

CLEAN POST HOLE DIGGER

After Each Use

- Remove large debris such as clumps of dirt, grass, crop residue, etc. from machine.
- Inspect machine and replace worn or damaged parts.
- Replace any safety decals that are missing or not readable.

Periodically or Before Extended Storage

- Clean large debris such as clumps of dirt, grass, crop residue, etc. from machine.
 - Remove the remainder using a low-pressure water spray.
1. Be careful when spraying near scratched or torn safety decals or near edges of decals as water spray can peel decal off surface.
 2. Be careful when spraying near chipped or scratched paint as water spray can lift paint.
 3. If a pressure washer is used, follow the advice of the pressure washer manufacturer.
- Inspect machine and replace worn or damaged parts.
 - Sand down scratches and the edges of areas of missing paint and coat with spray paint of matching color.
 - Replace any safety decals that are missing or not readable. See Safety Decals section for location.

TROUBLESHOOTING

PROBLEM	POSSIBLE CAUSE
Auger will not dig	<p>Shear bolt sheared – install new shear bolt.</p> <p>Teeth dull – sharpen or replace.</p> <p>Ground too dry and hard, wait until it rains.</p> <p>Auger turning too fast and bouncing – reduce speed.</p> <p>Tall grass has wrapped around auger teeth – remove grass.</p> <p>Auger encountering rocks, roots, or other obstruction – lift auger from hole and inspect.</p> <p>Auger teeth improperly positioned – see Parts section in this manual for proper tooth pattern.</p>
Post hole digger sways side to side	<p>No sway bars or sway blocks on tractor – add some.</p> <p>Lift arms not adjusted evenly – adjust lift arms.</p> <p>Post hole digger is mounted with excessive looseness in the hitch connecting points – use proper size pins or bushings.</p>
Bent auger flighting or bent auger	<p>Tractor moved while auger was turning in hole – always set brakes on tractor and make sure it is out of gear.</p> <p>Operator moved tractor with auger in hole to try and straighten a hole being dug at an angle.</p> <p>Auger is encountering rocks or roots or other foreign objects – remove object from hole or change location.</p> <p>Outer edge of auger flighting is bending due to contact with rocks or roots – use heavy-duty auger with thicker flighting.</p> <p>Shear bolt has been replaced with harder bolt – replace with Grade 2 bolt per instructions.</p>
Auger screws itself into the ground	<p>Operator did NOT ease 3-point hitch to ground slowly.</p> <p>Tractor 3-point does not have position control. Lift auger after advancing every 3" - 4" (75 - 100 mm).</p> <p>Faulty 3-point hitch hydraulic system on tractor.</p> <p>Draft control is not in OFF position.</p> <p>Tractor is too small to handle digger.</p>
Excessive vibration	PTO driveline bearing cross is worn – replace.
PTO driveline assembly comes off input shaft of gearbox when shear bolt is sheared	Set screw, or roll pin missing in yoke at gearbox input shaft. Install as driveline installation instructions. THIS IS A DANGEROUS HAZARD, CORRECT IMMEDIATELY!

TROUBLESHOOTING

PROBLEM	POSSIBLE CAUSE
Auger digs so far, but will not dig deeper	<p>See solutions for above.</p> <p>PTO assembly “bottoms out,” not allowing digger to lower – remove auger from digger and lower digger. Gearbox should lower to the ground; if not, PTO driveline assembly may need to be shortened.</p> <p>PTO driveline interferes with swinging drawbar – swing drawbar out of the way or remove.</p> <p>Tractor hydraulic system may be faulty – consult tractor dealer.</p> <p>Soil could have hardpan layer 6"-10" (150-250 mm) below surface.</p>
PTO driveline failure	<p>Operator raising post hole digger too high above ground when PTO is engaged – causes excessive PTO joint operating angle.</p> <p>PTO is engaged while moving between holes. (Auger swings, which causes excessive PTO joint operating angle.)</p> <p>Improper use of a hard shear bolt – use Grade 2 bolt per instructions.</p> <p>Driveline has not been properly lubricated.</p> <p>Engaging tractor PTO with engine at high rpm.</p> <p>Digging holes too deep so that PTO driveline contacts ground.</p> <p>Operating at high rpm.</p> <p>Use of auger extension can require post hole digger to be lifted high, which can cause excessive PTO joint operating angle.</p>
PTO driveline “galls” or “friction welds” to input shaft of gearbox	<p>No lubrication on input shaft of gearbox to allow yoke of PTO driveline to turn freely on input shaft when shear bolt is sheared. Always keep input shaft greased.</p>
Gearbox failure	<p>No oil in gearbox.</p> <p>Oil not changed per instructions.</p> <p>Driveline shear bolt has been replaced with a harder bolt – replace with Grade 2 per instructions.</p> <p>Bent output shaft is due to operator moving tractor when auger is in hole.</p>
Gearbox overheating	<p>Low on lubricant – fill to proper level.</p> <p>Improper type lubricant – replace with proper lubricant.</p>
Auger bolts shear on gearbox output shaft	<p>Shear bolt on input shaft has been replaced with a harder bolt – replace with Grade 2 bolt as per instructions.</p>
Tractor stalls	<p>Auger is encountering rocks or roots or other foreign object – remove object or change hole location.</p> <p>Tractor idle is not set correctly – tune tractor engine.</p>

ASSEMBLY INSTRUCTIONS

⚠ WARNING

- Keep hands, feet, hair, and clothing away from equipment while engine is running. Stay clear of all moving parts.
- Keep all persons and animals away from operator control area while performing adjustments, service, or maintenance.
- The use of driveline adapters could cause serious injury or death. Do not use driveline adapters when attaching driveline to tractor under any circumstances.

⚠ CAUTION

- Always wear relatively tight and belted clothing to avoid getting caught in moving parts. Wear sturdy, rough-soled work shoes and protective equipment for eyes, hair, hands, hearing, and head; and respirator or filter mask where appropriate.
- Heavy Components: To avoid muscle strain or back injury, use lifting aids and proper lifting techniques.
- Failure to follow instructions in this manual can result in injury.

SET-UP INSTRUCTIONS

The digger is shipped partially assembled. Assembly will be easier if the components are aligned and loosely assembled before tightening hardware. Recommended torque values for hardware are located on page 40.

Select a suitable working area. Uncrate parts boxes and lay out parts and hardware to make location easy. Refer to illustrations, accompanying text, parts lists and exploded view drawings.

IMPORTANT

- Post hole digger gearboxes are shipped without lubrication. Gearboxes must be serviced with SAE 80W-90 gear lube before operation.

ATTACH A-FRAME AND BOOM TO TRACTOR

A tractor is required during assembly of post hole digger. A tractor will make part fit-up, part alignment, and part handling easier.

1. Connect lift arm pins (6), Figure 8, and hardware supplied with pins to the A-frame assembly (2). Mount PTO shaft storage bracket (5) as shown on outside of A-frame. (PD95.51 only).

For PD95.51 mounted to a tractor with Category 2 3-point hitch, install sleeves (10) on lift arm pin.

NOTE: On tractors with 3-point arm spacing of 32 inches (813 mm), place mounting pins on the outside of the yoke assembly. On tractors with 3-point arm spacing of 26 inches (660 mm) or less, place mounting pins on the inside of the yoke assembly.

2. Connect A-frame assembly to the tractor 3-point arms.
3. Attach boom (1) to the tractor top link bracket..
4. Align A-frame assembly with the adjustment channel on the boom, starting with the second hole. Secure into position using boom adjustment pin (3) and lynch pin (4).

IMPORTANT

- With boom attached to tractor, raise boom by hand. Check clearance between boom and top link bracket. If interference exists, change hole location and recheck. Failure to check can result in damage to the tractor or boom.

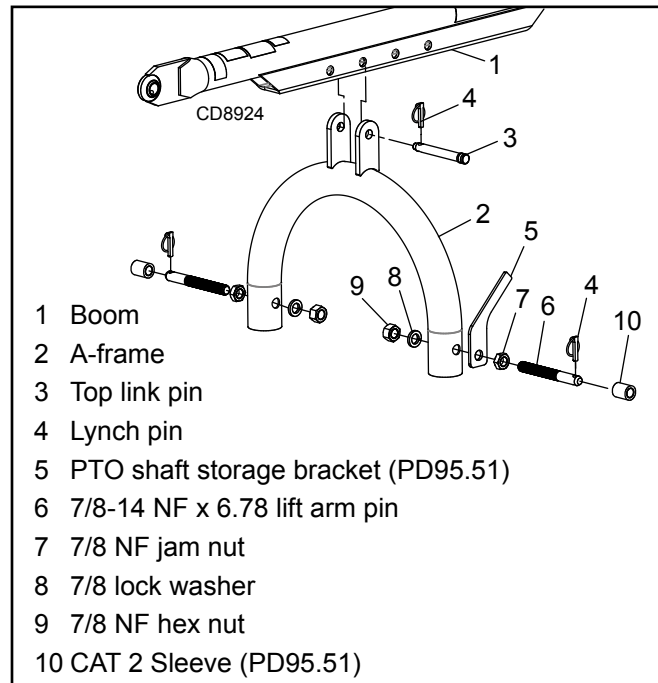


Figure 8. A-Frame to Boom Assembly

ATTACH GEARBOX TO BOOM

1. Place gearbox on level section of ground resting on output shaft shield.
2. Lower boom and align gearbox mount holes with boom mount hole.
3. Secure gearbox to boom using the supplied pin (4) and cotter pins (3).

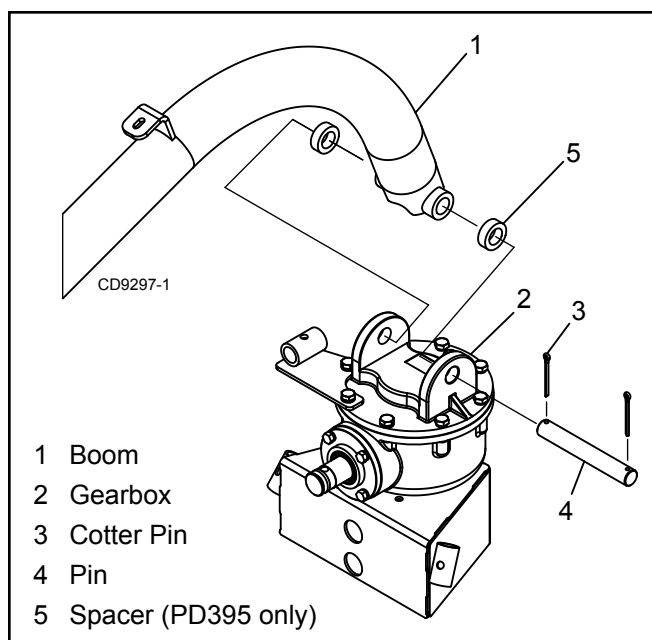


Figure 9. Gearbox to Boom Installation

GEARBOX INPUT SHAFT PLASTIC GUARD INSTALLATION

NOTE: Newer models ship with a separate plastic gearbox input guard. Older models used a factory installed metal guard.

1. Remove the four cap screws and lock washers from the gearbox input shaft housing. Discard the lock washers.
2. Install guard (10) to gearbox using the screws previously removed, and flat washers (14) for the PD25.21 and PD35.31. Use flat washer (16) for the PD95.51.

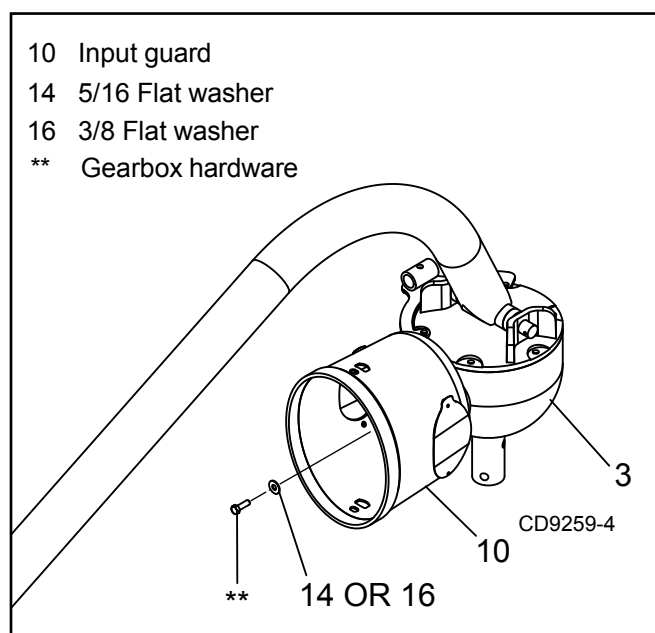


Figure 10. Gearbox Input Shaft Guard Installation

MANUAL CANISTER INSTALLATION

PD25.21, PD35.31

1. Attach manual canister (3) to boom (1) using screw (12), flat washer (13) and lock nut (14) for the cap end of canister.
2. For base end, use cap screw (15) flat washer (17). Also, attach driveline storage bracket (4) and flat washer and lock nut on this cap screw.
3. Insert a second cap screw with washers and lock nut into slot in bracket. Slide screw in slot so flat of hex head bolt contacts bracket on boom. Tighten both screws.

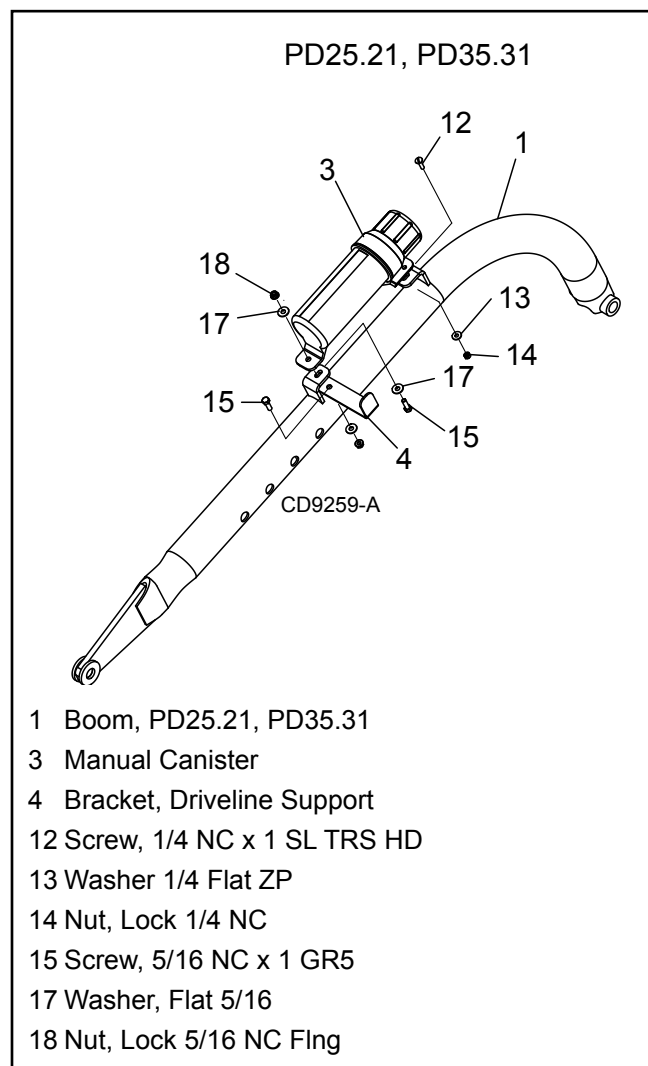


Figure 11. PD25.21 and PD35.31 Manual Canister Installation

PD95.51

1. Attach manual canister (3) to bottom channel of boom (2) using two self tapping screws (11).

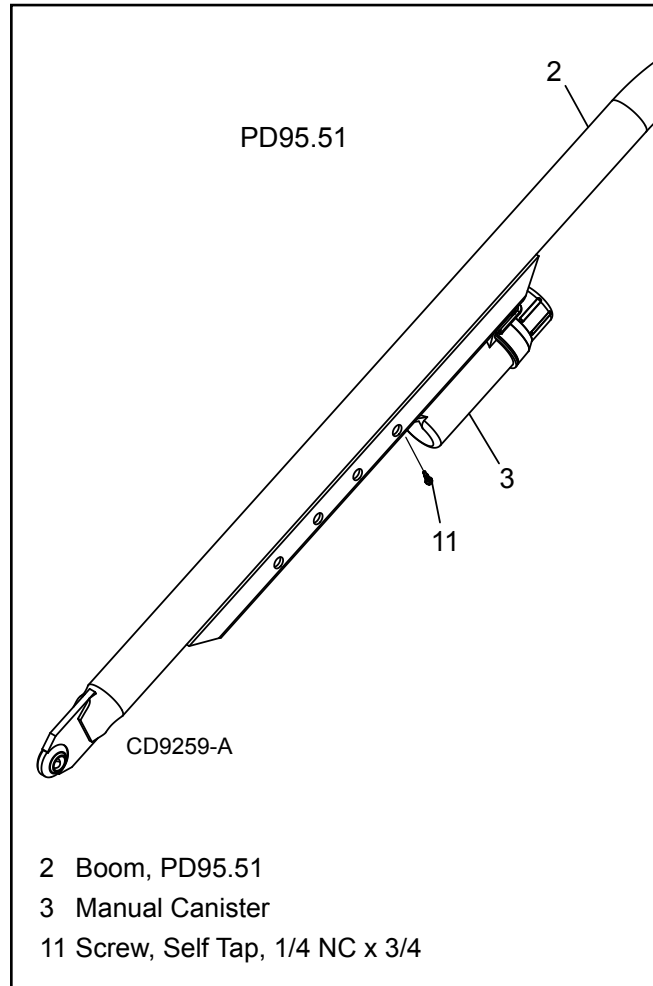


Figure 12. PD95.51 Manual Canister Installation

SMV SIGN SOCKET INSTALLATION

1. For the PD25.21 and PD35.31, remove the two rearmost screws and lock washers on the gear-box cover. For the PD95.51, remove the left rear bolt and lock washer from the gearbox cover. Save hardware for reuse.
2. Attach SMV mount bracket (7 or 8) to gearbox cover using hardware removed in step 1.
3. Attach socket (5) to bracket using two carriage bolts (16) and lock nuts (18).

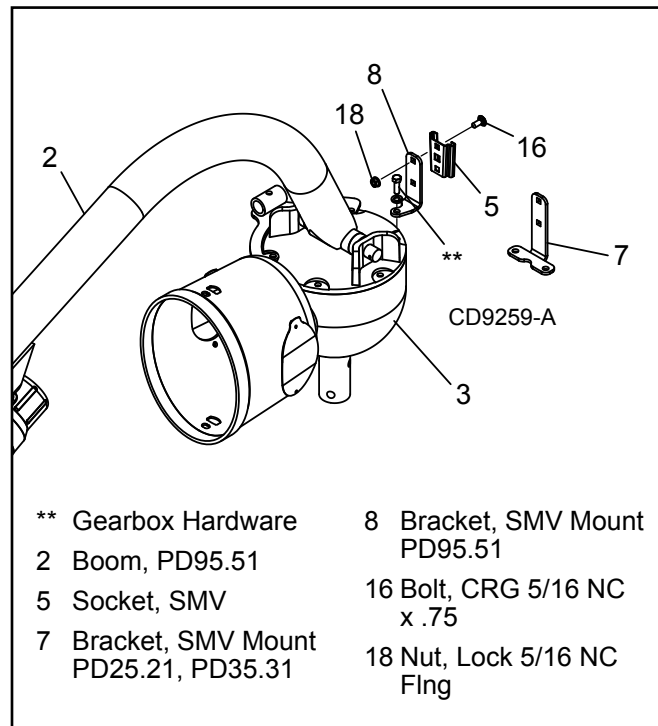


Figure 13. SMV Sign Socket Installation

⚠ WARNING

- If digger in transport position blocks the view of tractors SMV sign, attach sign to digger gearbox before transporting on roadway.

INSTALL DRIVELINE

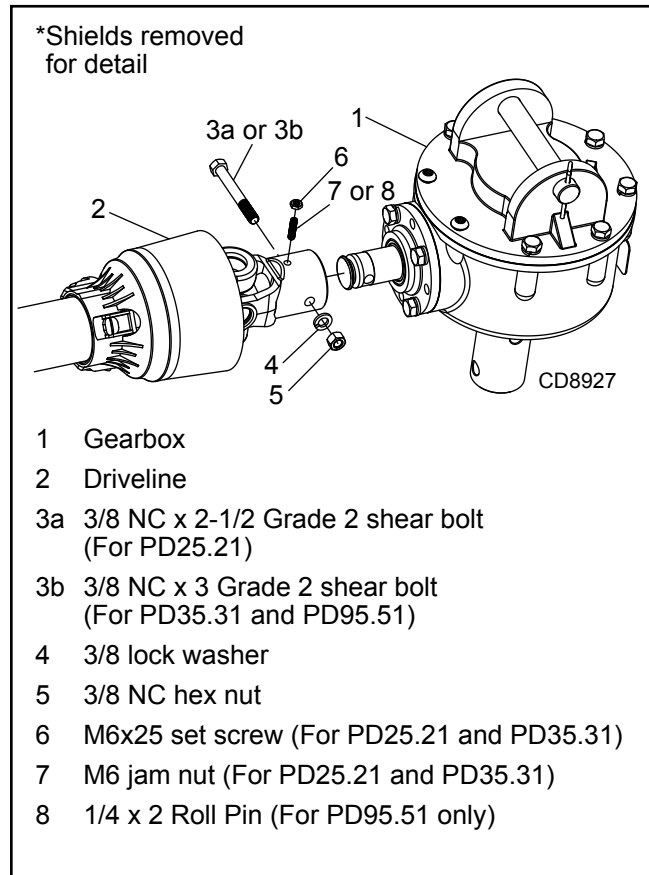


Figure 14. Driveline Installation

NOTICE

- **A grade 2 bolt must be used for the shear bolt to provide gearbox protection.**
- 1. Clean input shaft on gearbox and smooth bore of driveline yoke. Remove any foreign material or paint. Lightly file any nicks or dents.
- 2. Grease the input shaft of the gearbox. This reduces the chance of the driveline galling the shaft if the shear bolt should fail.
- 3. Slide driveline over input shaft and align cross holes. Insert shear bolt (3a or 3b) to hold parts together.
- 4. For PD25.21 and PD35.31, loosen the jam nut (6) so that it is flush with the top of the set screw (7). Tighten the set screw against the gearbox input shaft. Once tightened, loosen the set screw (7) a 1/4 turn. Continue to hold the set screw in this position while tightening the jam nut (6). Remove shear bolt (3a) from cross hole. Driveline yoke should spin freely on shaft.
- 5. For PD95.51, install the roll pin (8) into driveline yoke to secure driveline to gearbox shaft. Remove shear bolt (3b) from cross hole. Driveline yoke should spin freely on shaft.

IMPORTANT: The set screw or roll pin prevents the driveline from coming off gearbox shaft if the shear bolt should shear.

6. Secure drive line to input shaft with shear bolt (3a or 3b), lock washer (4), and hex nut (5).

ADJUST DRIVELINE LENGTH

Check Driveline Movement

With driveline attached to gearbox and no auger attached to the gearbox, follow the steps below to ensure proper driveline length:

1. If tractor has drawbar installed, see tractor owner's manual for instructions to remove tractor drawbar or place in storage position if available.
2. Attach driveline to tractor PTO. Make sure spring-activated locking pin or collar slides freely and is seated firmly in tractor PTO spline groove.

⚠ WARNING

- **The use of driveline adapters could cause serious injury or death. Do not use driveline adapters when attaching driveline to tractor under any circumstances.**
- 3. On a flat, level surface, slowly raise and lower the post hole digger while closely watching the driveline to see if it separates, binds, or bottoms out. With the 3-point arms fully raised, measure driveline overlap and verify there is a minimum of 6" (150 mm) overlap of driveline telescoping members. See Figure 15.

⚠ WARNING

- **Serious injury or death can occur if driveline has less than 6 inches (150 mm) of overlap. Do not use the driveline if there are less than 6 inches (150 mm) of overlap. Contact your place of purchase for a longer driveline.**
- 4. Lower 3-point arms until gearbox output shaft or gearbox output guard contacts the ground. With the gearbox on the ground, measure the overlap of the driveline. Verify there is a minimum of 2" (50 mm) of travel left before the driveline will bottom out. See Figure 15.

IMPORTANT: If the driveline has less than 2 inches (50 mm) of travel left before it bottoms out, follow the **Shorten Driveline** procedure.

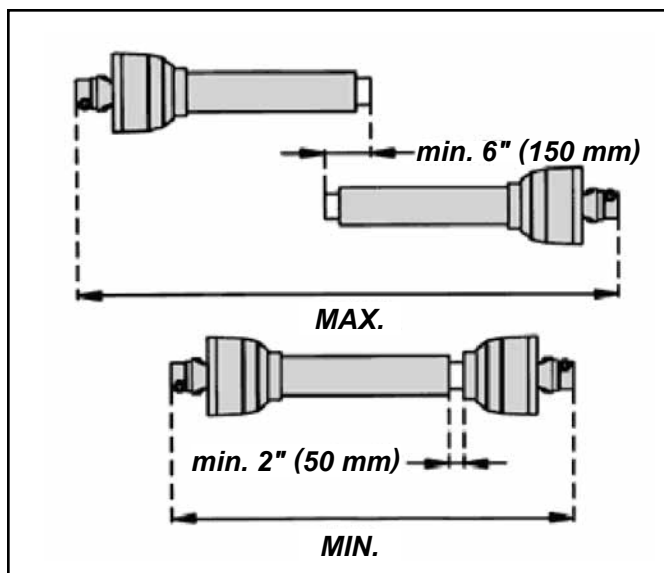


Figure 15. Example of Overlap

Shorten Driveline (If Required)

1. Remove driveline from gearbox shaft and tractor PTO.
2. Lower digger (with auger removed) until the input shaft of gearbox is in line with the PTO shaft of the tractor. This is the shortest distance required for the driveline.
3. Pull driveline apart. Connect driveline halves back to the gearbox and tractor PTO shaft.
4. Hold the two halves parallel to one another to determine how much the driveline must be shortened. Mark each end. See Figure 15.
5. Raise the digger to the transport position using the tractor 3-point arms.
6. Hold the two halves parallel to one another and check for a minimum of 6-inch (150 mm) overlap.

Cut Driveline

1. Place driveline half in a padded vise and cut shield off at the determined length.

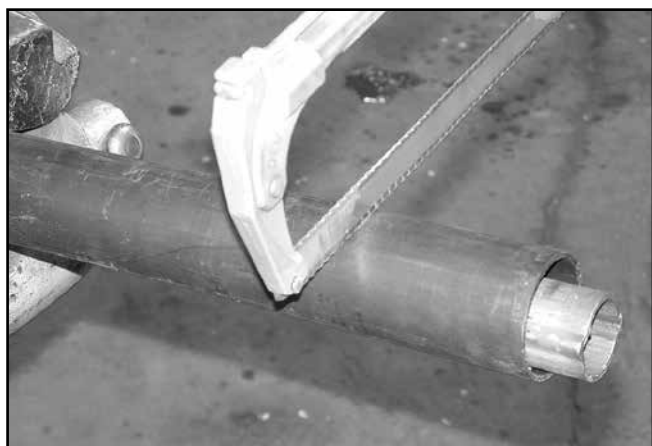


Figure 16. Cut Shield (Example)

2. Place the cutoff portion of the shield against the end of the shaft and use it as a guide. Mark and cut the shaft.



Figure 17. Cut Shaft to Length

3. Repeat steps for other drive half.
4. File and clean cut ends of the both drive halves.
5. Apply a multi-purpose grease to the outside of the male drive half. Slide the two drive halves together.
6. Connect driveline to gearbox and tractor PTO.

⚠ WARNING

- **Serious injury or death can occur if spring-activated locking pin or sliding collar does not move freely and is firmly seated in tractor PTO spline groove.**
7. Make sure set screw or roll pin is installed in driveline yoke to secure driveline to gearbox input shaft.
 8. Carefully raise and lower the digger to check that the driveline does not pull apart or bind through its range of motion.
 9. Use stabilizer bars, adjustable sway chains, or sway blocks on your tractor lift arms to keep the post hole digger from swaying side to side. Adjust as tightly as practical for best performance.

ATTACH AUGER TO GEARBOX

WARNING

- Never exceed the recommended auger capacity of the post hole digger. Use of an incorrect auger or auger extension can cause equipment damage, loss of operator control and personal injury. See specifications on page 4 for available auger capacities.
1. Raise boom (1), allowing enough space to install auger.
 2. Slide auger (3) over gearbox output shaft and install 1/2 bolt (4), 1/2 lock washer (5), and 1/2 nut (6) in both hole locations. Tighten all hardware.

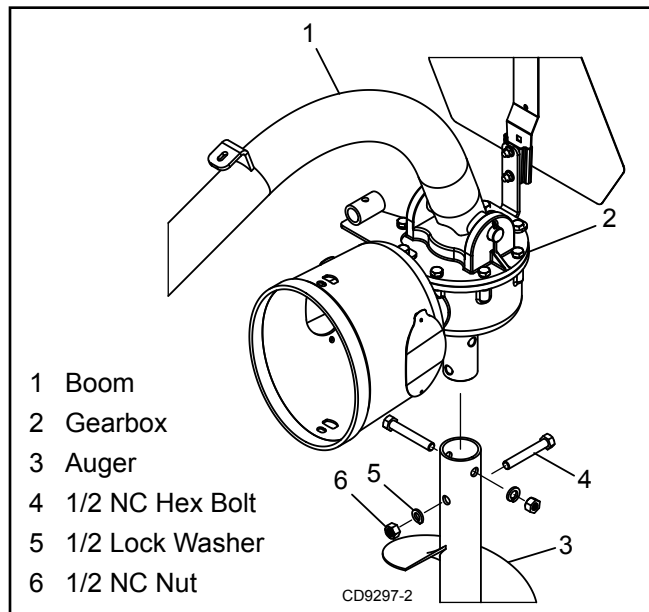


Figure 18. Auger to Gearbox Installation
(NOTE: Optional SMV sign shown)

FILL GEARBOX

IMPORTANT: Post hole digger gearbox is shipped without lubrication. Gearbox must be filled with SAE 80W-90 gear lube before operation.

1. Level gearbox and remove top fill plug and top sight plug on back side of gearbox.
2. Fill gearbox with SAE 80W-90 gear lube until oil runs out of sight hole.
3. Install both plugs.

INSTALL HANDLE (ROPS TRACTORS ONLY)

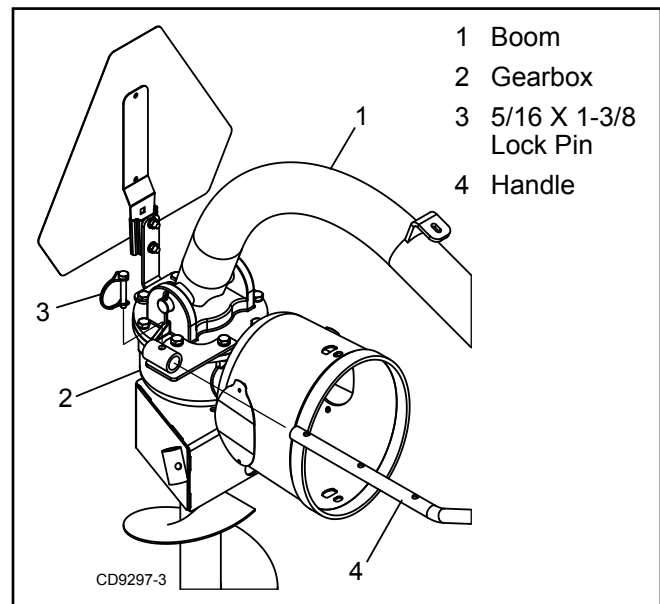


Figure 19. Handle Installed
(NOTE: Optional SMV sign shown)

IMPORTANT: Handle should not be installed on tractors equipped with a Cab. Damage to tractor may occur.

1. The handle has a series of holes that can be pinned at the gearbox. Use hole that allows for safe clearance to operators zone as digger is raised. Check access from tractor seat to handle with auger point on ground.
2. Install supplied handle grip once the handle position has been determined.

SET MAXIMUM LIFT HEIGHT

IMPORTANT: The maximum lift height of auger point above the ground is 12" (305 mm). Lifting higher can cause damage to digger or tractor.

1. Measure height of auger point off ground.
2. If too high (greater than 12" (305 mm), (a) make adjustments to 3-point position control lever "Up" stop to limit travel. (Refer to tractors owners manual.) (b) adjust length of 3-point lift links (c) connect 3-point lift links in a different set of holes (d) move digger A-frame pin to different hole towards gearbox end of boom (check clearance between boom and A-frame).
3. If too low, (a) make adjustments to 3-point position control lever "Up" stop to allow 3-point to lift higher. (Refer to tractors owners manual.) (b) adjust length of 3-point lift links (c) connect 3-point lift links in a different set of holes (d) move digger A-frame pin to different hole towards tractor end of boom (check clearance between boom and A-frame).

DEALER CHECKLISTS

DEALER PRE-DELIVERY CHECKLIST

(DEALER'S RESPONSIBILITY)

Inspect the equipment thoroughly after assembly to ensure it is set up properly before delivering it to the customer.

The following check lists are a reminder of points to inspect. Check off each item as it is found satisfactory or after proper adjustment is made.

- _____ Check that all safety decals are installed and in good condition. Replace if damaged.
- _____ Check that shields and guards are properly installed and in good condition. Replace if damaged.
- _____ Check all bolts to be sure they are properly torqued.
- _____ Check that all cotter pins and safety pins are properly installed. Replace if damaged.
- _____ Check and grease all lubrication points as identified in "lubrication information" on page 16.
- _____ Gearboxes are not filled at the factory. Prior to delivery, fill as specified in the "Service, lubrication information" on page 16 and check to see that there are no leaking seals.

DEALER DELIVERY CHECKLIST

(DEALER'S RESPONSIBILITY)

- _____ Show customer how to make adjustments and select proper PTO speed.
- _____ Instruct customer how to lubricate and explain importance of lubrication.
- _____ Point out the safety decals. Explain their meaning and the need to keep them in place and in good condition. Emphasize the increased safety hazards when instructions are not followed.
- _____ Present Operator's Manual and request that customer and all operators read it before operating equipment. Point out the manual safety rules, explain their meanings and emphasize the increased safety hazards that exist when safety rules are not followed.
- _____ Show customer how to make sure driveline is properly installed and that spring-activated locking pin or collar slides freely and is seated in groove on tractor PTO shaft.
- _____ Show customer the safe, proper procedures to be used when mounting, dismounting, and storing equipment.
- _____ Explain to customer the potential crushing hazards of going underneath raised equipment. Instruct that before going underneath to disconnect the driveline, securely block up all corners with jackstands and to follow all instructions in the "Service, blocking methods" section of the Operator's Manual. Explain that blocking up prevents equipment dropping from hydraulic leak down, hydraulic system failures, or mechanical component failures.
- _____ Due to the mass of the (mounted) machine itself and loaded materials, the tractor machine combination can influence maneuverability and stability. A minimum 20% of tractor and equipment weight must be on the tractor front wheels when attachments are in transport position. Without this weight, front tractor wheels could raise up resulting in loss of steering. Without this weight, tractor could tip over, causing personal injury or death. The weight may be attained with front wheel weights, ballast in tires, front tractor weights or front loader. Weigh the tractor and equipment. DO NOT ESTIMATE.
- _____ Make customer aware of optional equipment available so that customer can make proper choices as required.
- _____ Point out all guards and shields. Explain their importance and the safety hazards that exist when not kept in place and in good condition.



Post Hole Diggers:

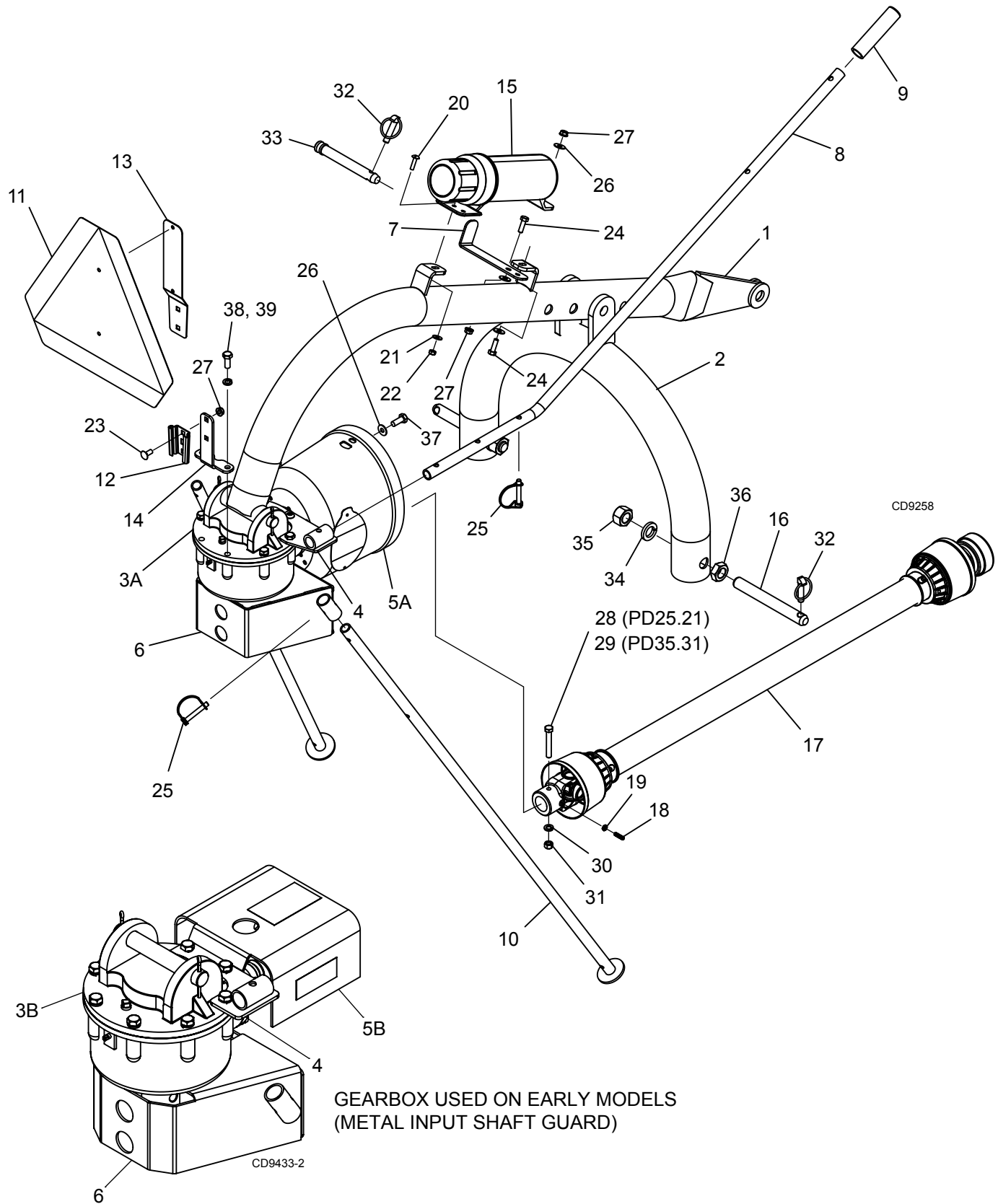
PD25.21

PD35.31

PD95.51

POST HOLE DIGGER ASSEMBLY PD25.21 AND PD35.31	28 - 29
POST HOLE DIGGER ASSEMBLY PD95.51	30 - 31
POST HOLE DIGGER ASSEMBLY (PD25.20, PD35.30, PD95.50)	32 - 33
PD25.21 AUGER ASSEMBLY	34
PD35.31 & PD95.51 AUGER TOOTH MOUNTING PATTERN	34
PD35.31 AND PD95.51 AUGER ASSEMBLY	35
PD25.21 AND PD35.31 DRIVELINE	36
PD95.51 DRIVELINE	37
PD25.21 AND PD35.31 GEARBOX	38
PD95.51 GEARBOX	39

POST HOLE DIGGER ASSEMBLY PD25.21 AND PD35.31



28 Parts

MAN1300
(12/16/2024)

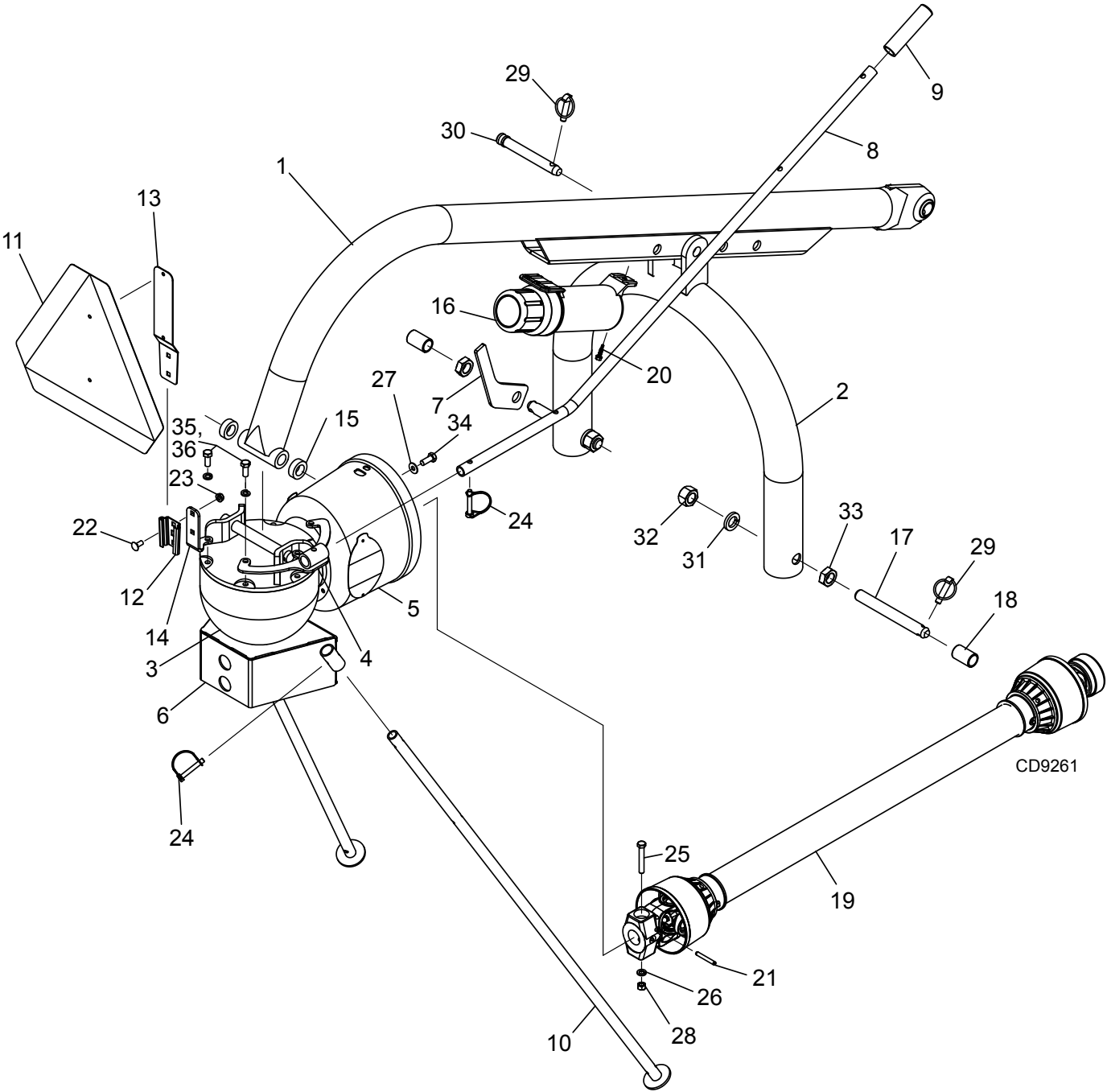
POST HOLE DIGGER ASSEMBLY PARTS LIST PD25.21 AND PD35.31

REF	PD25.21	PD35.31	QTY	DESCRIPTION
1	640391RP	640392RP	1	BOOM W/ DECALS
2	640394RP	640396RP	1	A-FRAME W/ DECALS
3A	632581	632581	1	GEARBOX BOX, COMPLETE (INCLUDES 3, 4, 6) (FOR GEARBOXES WITH PLASTIC INPUT SHAFT GUARD) (FOR GEARBOX REPAIR PARTS, SEE PAGE 38)
3B	640400RP	640400RP	1	GEARBOX, STANDARD DUTY W/ DECALS (INCLUDES 3, 4, 5A, 6) (FOR GEARBOX WITH METAL INPUT SHAFT GUARD)
4	631380	631380	1	BRACKET, HANDLE
5A	631387RP	631387RP	1	INPUT GUARD W/ DECALS
5B	642664	642664	1	GUARD, INPUT SHAFT W/ DECALS (FOR GEARBOXES WITH METAL GUARD ON INPUT SHAFT)
6	631390RP	631390RP	1	OUTPUT GUARD W/ DECALS
7	631383	631383	1	PTO STORAGE BRACKET
8	631384	631384	1	HANDLE, PHD
9	75393	75393	1	GRIP
10	632579RP	632579RP	2	LEG W/ DECAL
11	24611	24611	1	SIGN (SMV) SLOW MOVING VEHICLE (OPTIONAL)
12	62484	62484	1	SOCKET, SMV EMBLEM
13	1004251	1004251	1	SMV BRACKET (INCLUDES HARDWARE) (OPTIONAL)
14	631382	631382	1	BRACKET, SMV MOUNT
15	1026530	1026530	1	MANUAL CANISTER
16	1009383A	1009383A	2	PIN, LIFT ARM, 7/8" x 6.78
17	632571	632572	1	DRIVELINE (FOR REPAIR PARTS, SEE PAGE 36)
18	-----	-----	*1	M6-1.0 X 25 MM CONE POINT SET SCREW ZP
19	-----	-----	*1	M6-1.0 JAM NUT ZP
20	632593	632593	*1	SCREW, 1/4 NC X 1 SLOT TRUSS HEAD ZP
21	5336	5336	*1	1/4" FLAT WASHER ZP
22	6128	6128	*1	1/4" NC LOCK NUT ZP
23	51248	51248	*2	SCREW, CB 5/16" NC X 3/4 ZP
24	14562	14562	*2	5/16" NC x 1 GR5 HHCS GR 5 ZP
25	S07095400	S07095400	3	LOCK PIN, 5/16" X 1-3/8"
26	4378	4378	*8	5/16" FLAT WASHER ZP
27	1045655	1045655	*2	5/16" NC LOCK NUT ZP
28	629787	N/A	*1	3/8" NC x 2-1/2" SHEAR BOLT, GR 2 ZP
29	N/A	1036156	*1	3/8" NC x 3" SHEAR BOLT, GR 2 ZP
30	838	838	*1	3/8" LOCK WASHER ZP
31	835	835	*1	3/8" HEX NUT ZP
32	27542	27542	3	7/16" LYNCH PIN
33	S07071500	S07071500	1	3/4" TOP LINK PIN
34	30008	30008	*2	7/8" LOCK WASHER ZP
35	30007	30007	*2	7/8" NF HEX NUT ZP
36	30009	30009	*2	7/8" NF JAM NUT ZP
37	-----	-----	4	HHCS M8-1.25 x 25 GR8.8 ZP
38	-----	-----	8	HHCS M10-1.50 x 30 GR8.8 ZP
39	-----	-----	8	M10 LOCKWASHER
41	642686	-----	2	MODEL DECAL, PD25.21 (NOT SHOWN)
42	-----	642687	2	MODEL DECAL, PD35.31 (NOT SHOWN)
43	645175	645175	1	KIT, FRENCH MANUAL AND DECALS (NOT SHOWN)
45	MAN1300	MAN1300	1	MANUAL, ENGLISH (NOT SHOWN)

* OBTAIN LOCALLY
HHCS HEX HEAD CAP SCREW

NOTE: For safety decals, see pages 8 and 9.
Order decals separately.

POST HOLE DIGGER ASSEMBLY PD95.51



30 Parts

MAN1300
(12/16/2024)

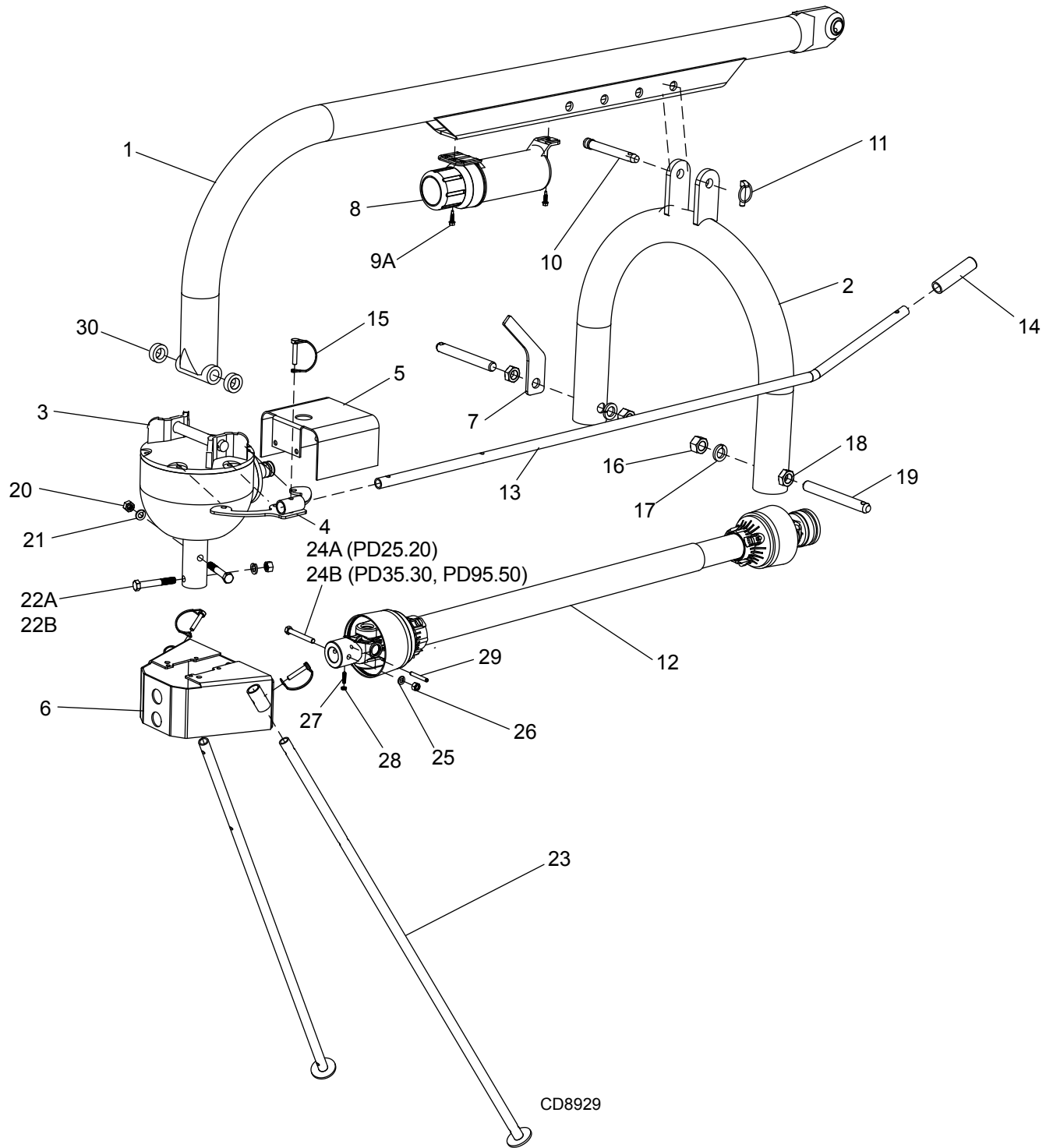
POST HOLE DIGGER ASSEMBLY PARTS LIST PD95.51

REF	PD95.51	QTY	DESCRIPTION
1	640393RP	1	BOOM W/ DECALS
2	640396RP	1	A-FRAME W/ DECALS
3	632585	1	GEARBOX BOX, COMPLETE (INCLUDES 3, 4, 6) (FOR GEARBOX REPAIR PARTS, SEE PAGE 39)
4	631391	1	BRACKET, HANDLE
5	631387RP	1	INPUT GUARD W/ DECALS
6	631390	1	OUTPUT GUARD W/ DECALS
7	602416	1	PTO STORAGE BRACKET
8	631385	1	HANDLE, PHD
9	75393	1	GRIP
10	632579	2	LEG W/ DECAL
11	24611	1	SIGN (SMV) SLOW MOVING VEHICLE (OPTIONAL)
12	62484	1	SOCKET, SMV EMBLEM
13	1004251	1	SMV BRACKET (INCLUDES HARDWARE) (OPTIONAL)
14	631386	1	BRACKET, SMV MOUNT
15	613848	2	SPACER
16	1026530	1	MANUAL CANISTER
17	1009383A	2	PIN, LIFT ARM, 7/8" x 6.78
18	S08020100	2	BUSHING, CAT 1,2 LIFT ARM
19	632573	1	DRIVELINE (FOR REPAIR PARTS, SEE PAGE 37)
20	585648	*2	1/4 -20 x 1" SELF TAPPING SCREW ZP
21	21022	1	1/4 x 2 ROLL PIN
22	51248	2	SCREW, CB 5/16" NC X 3/4 ZP
23	1045655	*2	5/16" NC LOCK NUT ZP
24	S07095400	3	LOCK PIN, 5/16" X 1-3/8"
25	1036156	*1	3/8" NC x 3" SHEAR BOLT, GR 2 ZP
26	838	*1	3/8" LOCK WASHER ZP
27	21757	*4	3/8" FLAT WASHER ZP
28	835	*1	3/8" HEX NUT ZP
29	S07090100	3	7/16" LYNCH PIN ZP
30	S07071500	1	3/4" TOP LINK PIN
31	30008	*2	7/8" LOCK WASHER ZP
32	30007	*2	7/8" NF HEX NUT ZP
33	37009	*2	7/8" NF JAM NUT ZP
34	-----	4	HHCS M10-1.50 X 25 GR 8.8 ZP
35	-----	6	HHCS M10-1.50 X 30 GR 8.8 ZP
36	-----	6	M10 LOCKWASHER ZP
38	642688	2	MODEL DECAL, PD95.51 (NOT SHOWN)
39	645175	1	KIT, FRENCH MANUAL AND DECALS (NOT SHOWN)
41	MAN1300	1	MANUAL, ENGLISH (NOT SHOWN)
			* OBTAIN LOCALLY

NOTE: For safety decals, see pages 8 and 9.
Order decals separately.

POST HOLE DIGGER ASSEMBLY PD25.20, PD35.30, PD95.50

(BUILT DECEMBER 2024 AND EARLIER)



32 Parts

MAN1300
(12/16/2024)

POST HOLE DIGGER ASSEMBLY PARTS LIST PD25.20, PD35.30, PD95.50

(BUILT DECEMBER 2024 AND EARLIER)

REF	PD25.20	PD35.30	PD95.50	QTY	DESCRIPTION
1	640391RP	640392RP	640393RP	1	BOOM W/ DECALS
2	640394RP	640396RP	640396RP	1	A-FRAME W/ DECALS
3	640400RP	640400RP	###	1	GEAR BOX, COMPLETE (INCLUDES 3, 4, 5, 6)
4	631380	631380	631391	1	LUG BRACKET
5	642664	642664	642667	1	INPUT GUARD
6	631390RP	631390RP	631390RP	1	OUTPUT GUARD
7	602416	602416	602416	1	PTO STORAGE BRACKET
8	1026530	1026530	1026530	1	MANUAL CANISTER
9A	----	----	585648*	2	1/4" x 1" SELF TAPPING SCREW (PD95)
9B	14562*	14562*	----	2	5/16 NC x 1 GR5 HCS (FOR MANUAL CANISTER MOUNTING, NOT SHOWN)
9C	1045655*	1045655*	----	2	5/16 NC LOCK NUT (FOR MANUAL CANISTER MOUNTING, NOT SHOWN)
10	S07071500	S07071500	S07071500	1	3/4" TOP LINK PIN
11	27542*	27542*	27542*	1	7/16" LYNCH PIN
12	632571	632572	632573	1	DRIVE LINE, LARGE, SLIDE COLLAR
13	631384	631384	631385	1	HANDLE, PHD
14	75393	75393	75393	1	GRIP
15	S07095400	S07095400	S07095400	3	LOCK PIN, 5/16" X 1-3/8"
16	30007*	30007*	30007*	2	7/8" NF HEX NUT
17	30008*	30008*	30008*	2	7/8" LOCK WASHER
18	37009*	37009*	37009*	2	7/8" NF JAM NUT
19	1009383A	1009383A	1009383A	2	PIN, LIFT ARM, 7/8" x 6.78
20	1093*	1093*	1093*	2	1/2" NC HEX NUT
21	855*	855*	855*	2	1/2" LOCK WASHER
22A	14069*	----	----	2	1/2 NC x 3-1/4 HEX BOLT, GRADE 5 (PD25.20)
22B	----	1637*	1637*	2	1/2 NC x 3-1/2 HEX BOLT, GRADE 5 (PD35.30, PD95.50)
23	632579RP	632579RP	632579RP	2	LEG KIT WITH DECAL
24A	629787*	----	----	1	3/8" NC x 2-1/2" SHEAR BOLT, GRADE 2 (PD25.20)
24B	----	1036156*	1036156*	1	3/8" NC x 3" SHEAR BOLT, GRADE 2 (PD35.30, PD95.50)
25	838*	838*	838*	1	3/8" LOCK WASHER
26	835*	835*	835*	1	3/8" HEX NUT
27	----	----	----	1	M6-1.0 X 25 MM CONE POINT SET SCREW ZP
28	----	----	----	1	M6-1.0 JAM NUT ZP
29	----	----	21022	1	1/4 X 2 ROLL PIN
30	----	----	613848	2	SPACER
31	613368	613369	613371	2	MODEL DECAL (NOT SHOWN)

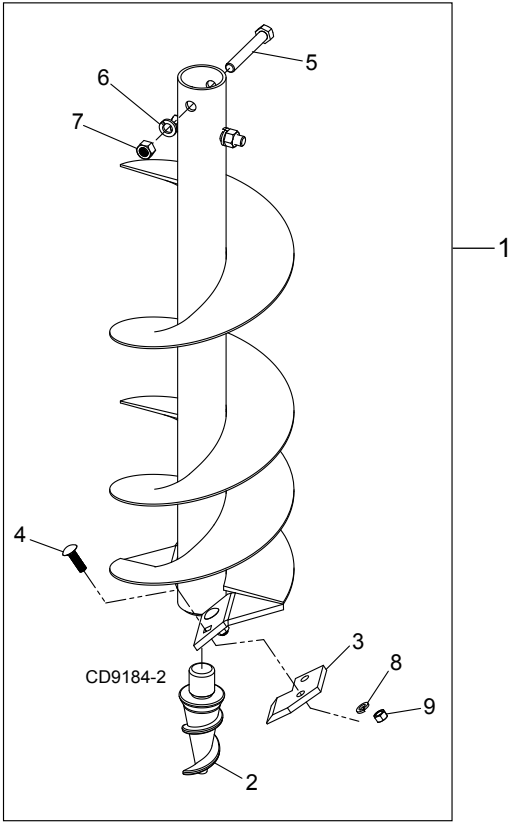
* OBTAIN LOCALLY
 HHCS HEX HEAD CAP SCREW
 ### GEARBOX 613031 NO LONGER AVAILABLE.
 ORDER 1 OF 632585, 631387RP AND 4 OF 21757

NOTE: For safety decals, see pages 8 and 9. Order decals separately.

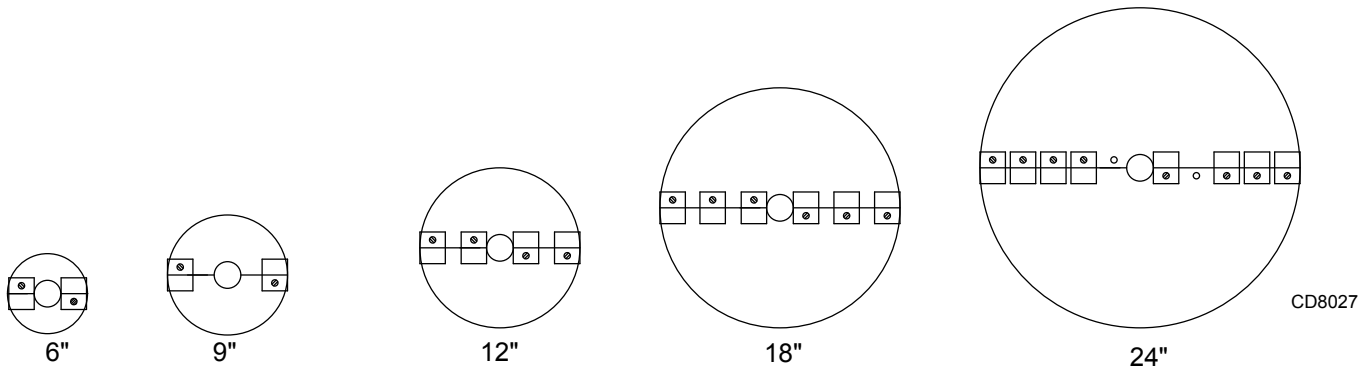
PD25.21 AUGER ASSEMBLY **PARTS SHOWN COMPATIBLE WITH PD25.20**

REF	PART	QTY	DESCRIPTION
1	634162	1	6" SEMI-DOUBLE FLIGHT AUGER, 36" LONG
1	634161	1	9" SEMI-DOUBLE FLIGHT AUGER, 36" LONG
1	634160	1	12" SEMI-DOUBLE FLIGHT AUGER, 36" LONG
2	S24059200	1	AUGER, SCREW POINT
3	S24056700	2	6" CUTTING EDGE FOR 634162
3	S24057800	1	9" INNER CUTTING EDGE FOR 634161
3	S24057700	1	9" OUTER CUTTING EDGE FOR 634161
3	S24058800	1	12" INNER CUTTING EDGE FOR 634160
3	S24058700	1	12" OUTER CUTTING EDGE FOR 634160
4	20973 *	VAR	3/8 NC X 1-1/4 CARRIAGE BOLT, GR5 ZP
5	14069 *	2	1/2 NC X 3-1/4 HEX HEAD BOLT, GR5 ZP
6	855 *	2	1/2 LOCK WASHER ZP
7	1093 *	2	1/2 NC HEX NUT ZP
8	838 *	VAR	3/8 LOCK WASHER ZP
9	835 *	VAR	3/8 HEX NUT ZP

* STANDARD HARDWARE
- OBTAIN LOCALLY
VAR QUANTITY VARIES PER AUGER



PD35.31 & PD95.51 AUGER TOOTH MOUNTING PATTERN

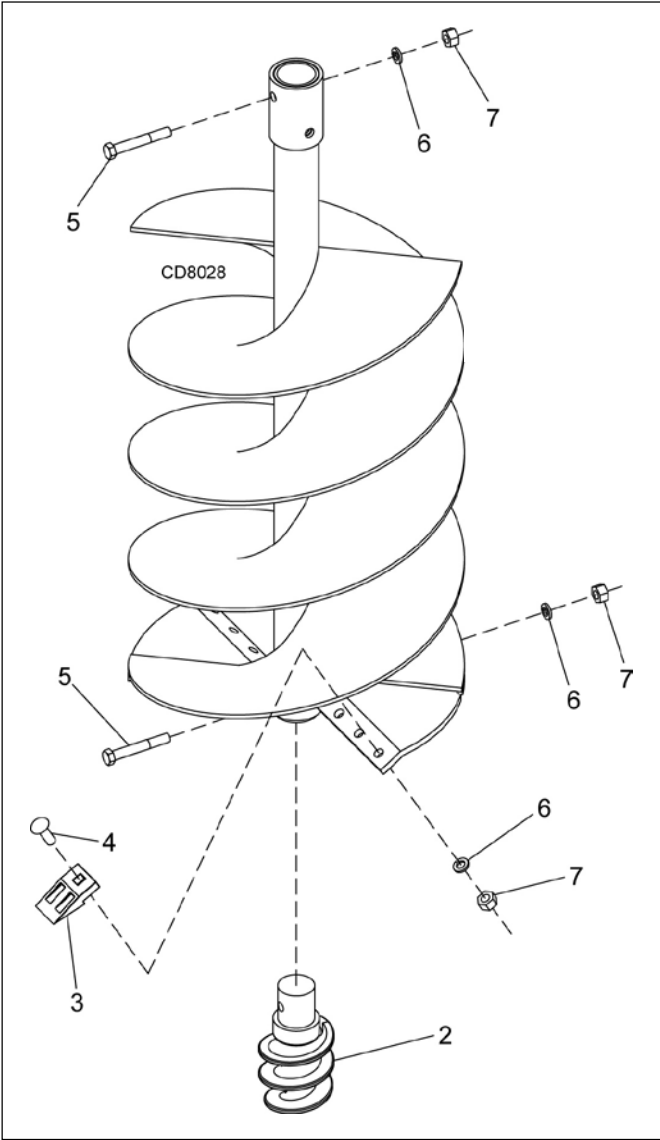


34 Parts

MAN1300
(12/16/2024)

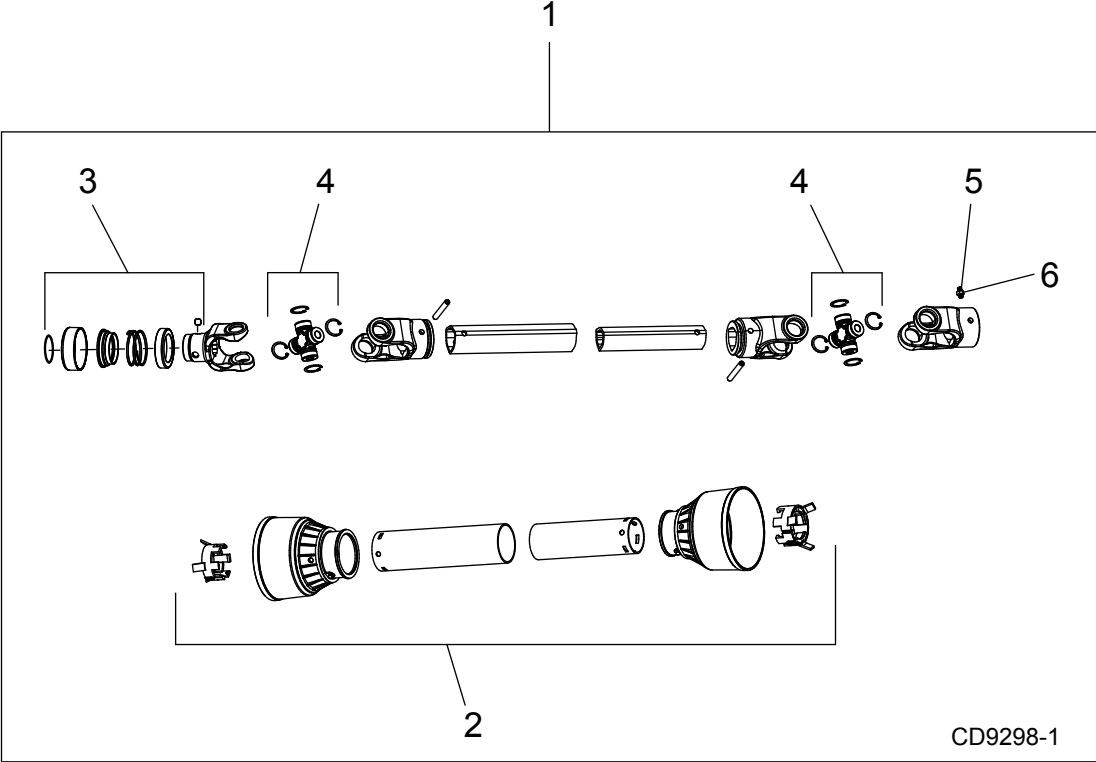
PD35.31 & PD95.51 AUGER ASSEMBLY

PARTS SHOWN COMPATIBLE WITH PD35.30 AND PD95.50



REF	PART	QTY	DESCRIPTION	REF	PART	QTY	DESCRIPTION
1	612862	1	6" SEMI-DOUBLE FLIGHT AUGER, 48" LONG	3	S24122200	VAR	AUGER CARBIDE CUTTING EDGE
1	612864	1	9" SEMI-DOUBLE FLIGHT AUGER, 48" LONG	4	29893	* VAR	1/2 NC X 1-1/2 CARRIAGE BOLT, GR5 ZP
1	612865	1	12" SEMI-DOUBLE FLIGHT AUGER, 48" LONG	5	1637	2	1/2 NC X 3-1/2 HEX HEAD BOLT, GR5 ZP
1	612866	1	18" SEMI-DOUBLE FLIGHT AUGER, 48" LONG (PD95.51 ONLY)	6	855	* VAR	1/2 LOCK WASHER ZP
1	612867	1	24" DOUBLE FLIGHT AUGER, 48" LONG (PD95.51 ONLY)	7	1093	* VAR	1/2 NC HEX NUT ZP
2	S24121900	1	AUGER POINT, SPIRAL (BOLT IN)				* STANDARD HARDWARE - OBTAIN LOCALLY
						VAR	QUANTITY VARIES PER AUGER

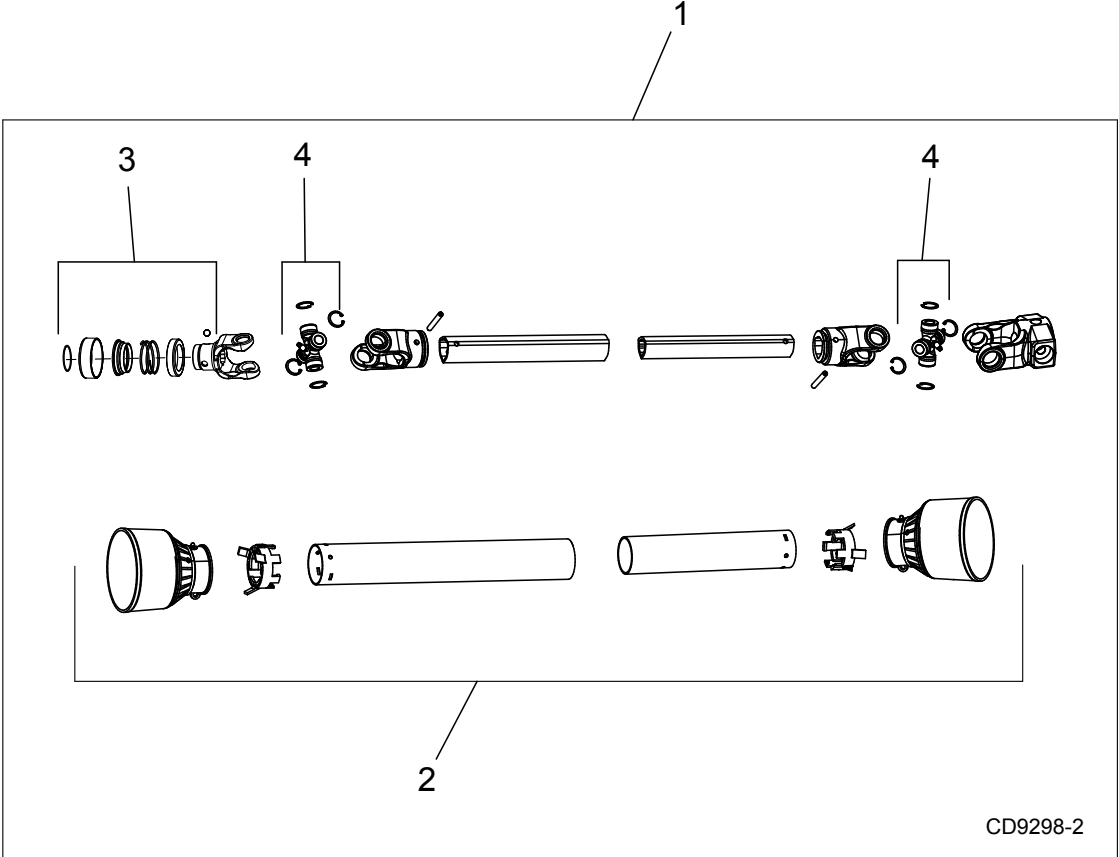
PD25.21, PD35.31 DRIVELINE



REF	PD25.21	PD35.31	QTY	DESCRIPTION
1	632571	---	1	DRIVELINE, COMPLETE 47.8 X 68.0 LD (COMPATIBLE WITH PD25.20)
1	---	632572	1	DRIVELINE, COMPLETE 49.8 X 68.0 HD (COMPATIBLE WITH PD35.30)
2	632599	632598	1	KIT, SHIELD COMPLETE (NOTE: TUBES WILL NEED TO BE CUT TO LENGTH)
3	632601	1044050	1	KIT, LOCK COLLAR REPAIR
4	632602	1044052	2	KIT, CROSS AND BEARING
5	---	---	*1	SET SCREW, M6 -1.0 X 25 ZP
6	---	---	*1	JAM NUT, M6 -1.0 ZP

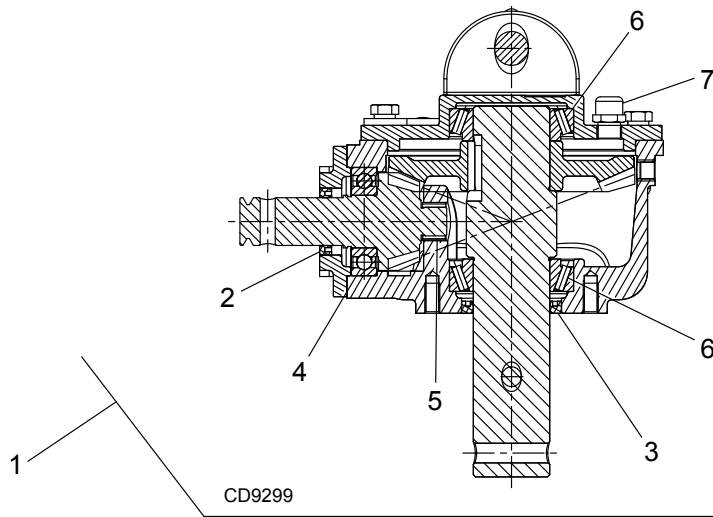
* Standard Hardware - Obtain Locally

PD95.51 DRIVELINE



REF	PD95.51	QTY	DESCRIPTION
1	632573	1	DRIVELINE, COMPLETE 50.0 X 73.5 HD (COMPATIBLE WITH PD95.50)
2	632598	1	KIT, SHIELD COMPLETE
3	1044050	1	KIT, LOCK COLLAR REPAIR
4	1044052	2	KIT, CROSS AND BEARING

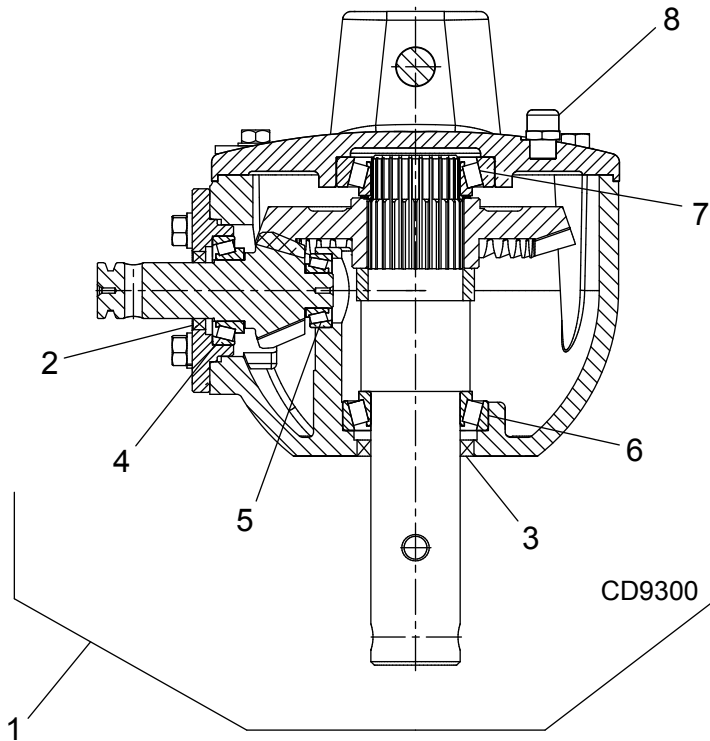
PD25.21, PD35.31 GEARBOX **(COMPATIBLE WITH PD25.20 AND PD35.30)**



NOTE: COMPLETE GEARBOX
 IS NOT AVAILABLE FOR REPAIR.
 SEE PAGE 29 FOR GEARBOX WITH
 SHIELD ASSEMBLY

REF	PART	QTY	DESCRIPTION
1	613872	1	KIT, REPAIR STD GEARBOX (INCLUDES 2-6)
2	---	1	SEAL, INPUT SHAFT
3	---	1	SEAL, OUTPUT SHAFT
4	---	1	BEARING, ROLLER
5	---	1	BEARING, NEEDLE
6	---	2	BEARING, TAPERED ROLLER
7	39325	1	PLUG, VENTED 3/8

PD95.51 GEARBOX
(COMPATIBLE WITH PD95.50)



NOTE: COMPLETE GEARBOX
IS NOT AVAILABLE FOR REPAIR.
SEE PAGE 31 FOR GEARBOX WITH
SHIELD ASSEMBLY

REF	PD95.51	QTY	DESCRIPTION
1	615739	1	KIT, REPAIR HD GEARBOX (INCLUDES 2-7)
2	---	1	SEAL, INPUT SHAFT
3	---	1	SEAL, OUTPUT SHAFT
4	---	1	BEARING, TAPERED ROLLER
5	---	1	BEARING, TAPERED ROLLER
6	---	1	BEARING, TAPERED ROLLER
7	---	1	BEARING, TAPERED ROLLER
8	39325	1	PLUG, VENTED 3/8

BOLT TORQUE CHART

Always tighten hardware to these values unless a different torque value or tightening procedure is listed for a specific application.

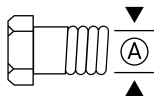
Fasteners must always be replaced with the same grade as specified in the manual parts list.

Always use the proper tool for tightening hardware: SAE for SAE hardware and Metric for metric hardware. Make sure fastener threads are clean and you start thread engagement properly.

All torque values are given to specifications used on hardware defined by SAE J1701 MAR 99 & J1701M JUL 96.

SAE SERIES TORQUE CHART

SAE Bolt Head Identification



SAE Grade 2
(No Dashes)



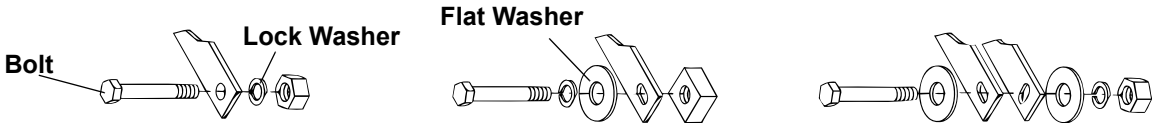
SAE Grade 5
(3 Radial Dashes)



SAE Grade 8
(6 Radial Dashes)

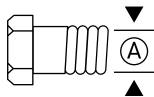
Ⓐ	Wrench Size	Marking on Head					
		SAE 2		SAE 5		SAE 8	
		lbs-ft	N-m	lbs-ft	N-m	lbs-ft	N-m
1/4"	7/16"	6	8	10	13	14	18
5/16"	1/2"	12	17	19	26	27	37
3/8"	9/16"	23	31	35	47	49	67
7/16"	5/8"	36	48	55	75	78	106
1/2"	3/4"	55	75	85	115	120	163
9/16"	13/16"	78	106	121	164	171	232
5/8"	15/16"	110	149	170	230	240	325
3/4"	1-1/8"	192	261	297	403	420	569
7/8"	1-5/16"	306	416	474	642	669	907
1"	1-1/2"	467	634	722	979	1020	1383

TYPICAL WASHER INSTALLATIONS



METRIC SERIES TORQUE CHART

Metric Bolt Head Identification



Metric
Grade 8.8



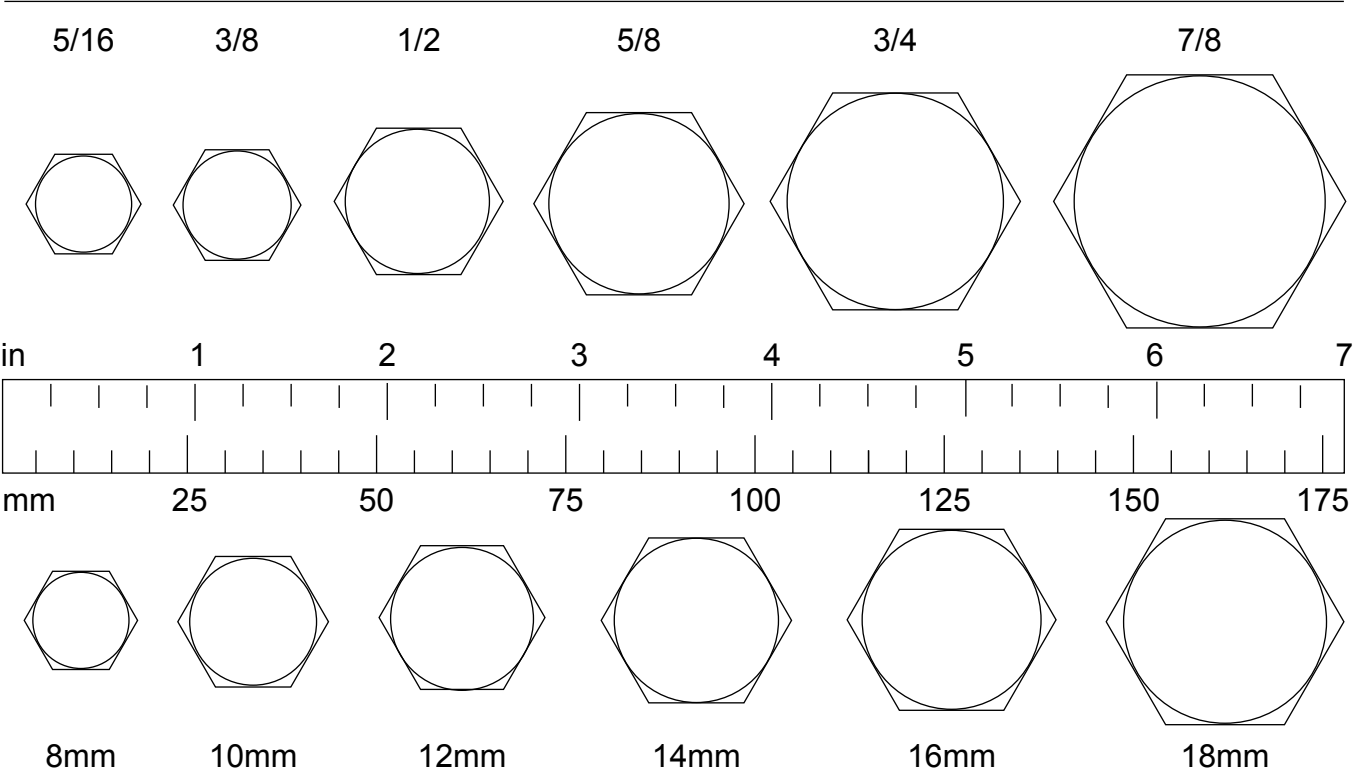
Metric
Grade 10.9

Ⓐ Diameter & Thread Pitch (Millimeters)	Wrench Size	Coarse Thread				Fine Thread				Ⓐ Diameter & Thread Pitch (Millimeters)
		Marking on Head				Marking on Head				
		Metric 8.8		Metric 10.9		Metric 8.8		Metric 10.9		
		N-m	lbs-ft	N-m	lbs-ft	N-m	lbs-ft	N-m	lbs-ft	
6 x 1.0	10 mm	8	6	11	8	8	6	11	8	6 x 1.0
8 x 1.25	13 mm	20	15	27	20	21	16	29	22	8 x 1.0
10 x 1.5	16 mm	39	29	54	40	41	30	57	42	10 x 1.25
12 x 1.75	18 mm	68	50	94	70	75	55	103	76	12 x 1.25
14 x 2.0	21 mm	109	80	151	111	118	87	163	120	14 x 1.5
16 x 2.0	24 mm	169	125	234	173	181	133	250	184	16 x 1.5
18 x 2.5	27 mm	234	172	323	239	263	194	363	268	18 x 1.5
20 x 2.5	30 mm	330	244	457	337	367	270	507	374	20 x 1.5
22 x 2.5	34 mm	451	332	623	460	495	365	684	505	22 x 1.5
24 x 3.0	36 mm	571	421	790	583	623	459	861	635	24 x 2.0
30 x 3.0	46 mm	1175	867	1626	1199	1258	928	1740	1283	30 x 2.0

BOLT SIZE CHART

NOTICE: Chart shows bolt thread sizes and corresponding head (wrench) sizes for standard SAE and metric bolts.

SAE BOLT THREAD SIZES



METRIC BOLT THREAD SIZES

ABBREVIATIONS

AG	Agriculture	HT	Heat-Treated	ORBM	O-Ring Boss - Male
ASABE	American Society of Agricultural & Biological Engineers (formerly ASAE)	JIC	Joint Industry Council 37° Degree Flare	P	Pitch
ASAE	American Society of Agricultural Engineers	LH	Left Hand	PBY	Power-Beyond
ATF	Automatic Transmission Fluid	LT	Left	psi	Pounds per Square Inch
BSPP	British Standard Pipe Parallel	m	Meter	PTO	Power Take Off
BSPTM	British Standard Pipe Tapered Male	mm	Millimeter	QD	Quick Disconnect
CV	Constant Velocity	M	Male	RH	Right Hand
CCW	Counter-Clockwise	MPa	Mega Pascal	ROPS	Roll-Over Protective Structure
CW	Clockwise	N	Newton	RPM	Revolutions Per Minute
F	Female	NC	National Coarse	RT	Right
FT	Full Thread	NF	National Fine	SAE	Society of Automotive Engineers
GA	Gauge	NPSM	National Pipe Straight Mechanical	UNC	Unified Coarse
GR (5, etc.)	Grade (5, etc.)	NPT	National Pipe Tapered	UNF	Unified Fine
HHCS	Hex Head Cap Screw	NPT SWF	National Pipe Tapered Swivel Female	UNS	Unified Special

INDEX

ASSEMBLY

- Adjust Driveline Length 23
- Attach A-frame and Boom 20
- Attach Auger to Gearbox 25
- Attach Gearbox 20
- Fill Gearbox 25
- Install Driveline 23
- Install Gearbox Input Shaft Plastic Guard 21
- Install Handle (Rops Tractors Only) 25
- Manual Canister Installation 21
- Set Maximum Lift Height 25
- Set-Up Instructions 20
- SMV Sign Socket Installation 22

DEALER CHECKLISTS

- Delivery (Dealer's Responsibility) 26
- Pre-Delivery (Dealer's Responsibility) 26

GENERAL

- Abbreviations 41
- Bolt Size Chart 41
- Bolt Torque Chart 40
- General Information 3
- Introduction 2
- Obtaining Replacement Manuals 2
- Specifications 4
- Table of Contents 3

OPERATION

- Attach Digger 11
- Lodged Auger 13
- Operating Technique 12
- Pre-Operation Checklist
(Owner's Responsibility) 11
- Preparation 10
- Remove Digger 14
- Shear Bolt Replacement 13
- Storage 14
- Transport 14

OWNER SERVICE

- Cleaning
 - After Each Use 17
 - Periodically or Before Extended Storage 17
- Lubrication Information 16
 - Lubrication Chart 16
- Remove Digger From Tractor 14
- Replace Cutting Edge 17
- Routine Maintenance 16
- Storage 14, 15

PARTS

- Index to Parts Lists 27

SAFETY

- Checklists
 - Delivery (Dealer's Responsibility) 26
 - Pre-Delivery (Dealer's Responsibility) 26
 - Pre-Operation (Owner's Responsibility) 11
- Safety & Instructional Decals 8 - 9
- Safety Rules 5 - 7
- Safety Symbols Explained 2

TROUBLESHOOTING

- Post Hole Digger Issues 18 - 19

PART NO.
MAN1300

WOODS®

2606 South Illinois Route 2
Post Office Box 1000
Oregon, Illinois 61061 USA

800-319-6637 tel
800-399-6637 fax
woodsequipment.com



© 2024 Woods Equipment Company. All rights reserved. Woods® and the Woods logo are trademarks of Woods Equipment Company. All other trademarks, trade names, or service marks not owned by Woods Equipment Company that appear in this manual are the property of their respective companies or mark holders. Specifications subject to change without notice.